

Installation Instructions

Ridge Series Rear Bumper

Open all boxes and check to make sure all the hardware is accounted for (see attached Hardware sheet) if any pieces are damaged or missing contact Rockslide Engineering 435-752-4580.

Remove stock bumper and set aside with all of the hardware. The frame side and tire carrier bolts will be reused. NOTE: The stock receiver hitch must be removed.



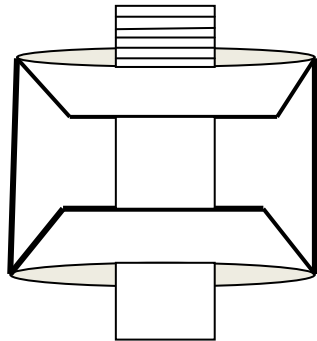
Attach the Ridge series rear bumper using the frame side stock bolts. Apply thread lock. Hand tighten all four. Bolt the tow hitch mounting plate to the cross member, hand tight only, leaving some room to adjust



Using the machined slots on the frame side position the bumper into the desired location. Ridge series bumpers are engineered to match the vehicle contour lines; however subtle body differences may

occur. Leave at least $\frac{1}{4}$ in of clearance between bumper and body for body movement. Once the location has been determined torque frame side and cross member bolts to 50ft. lbs

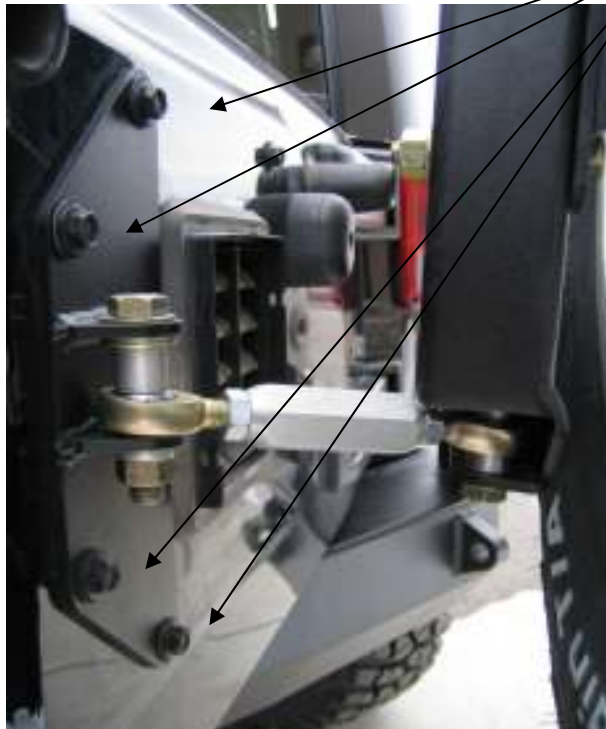
The tire swing must have two bearing races installed, making sure the thick side of the races are facing inward. When installed correctly the top race has a taper that faces towards the ground, the bottom race taper points skyward.



Spindle and bearing cross section

Once the races have been installed, pack the bearings with grease and install inside the carrier, taper side up. Next install the seal by tapping it into the bottom of the carrier. Slide the carrier, bearing and seal over the spindle on the bumper. Install the upper bearing taper side down by sliding it over the treads on the spindle. Install washer and nut, tighten nut so there is no play in the assembly but loose enough that the carrier operates in a smooth fashion.

Thread on aluminum cap making sure that the o-ring is in place. Attach plate to the tailgate using the stock bolts in tailgate, NOTE: some minor trimming to accommodate for vent size may be necessary.



Attach Hiem joints on the tailgate side and the swinger side with the turnbuckle. By using the supplied spacers make the joint as level as possible. Attach the bump stop to the tailgate.



Pound the lug studs into the tire mount. Determine the best location for your tire size and lug pattern.
NOTE: The tire carrier is designed to accommodate tire sizes up to 39in.

Torque the tire mount to the swinger arm attach wheel to mount.

Rotate the turn buckle to take up any movement from the carrier, making sure the arm rests snugly against the bump stop when the tailgate is closed. Take extra care that the tailgate opens and closes freely, double check all adjustments and bolts for proper fitment and torque.