

Rally Armor 2005-2009 Subaru Legacy & Outback Mud Flap Mounting Instructions

Please read the instructions thoroughly before attempting to install mud flaps. Rally Armor always recommends professional installation. For high resolution images and the most up to date instructions, please visit our mounting instructions area on <http://www.rallyarmor.com>.

To protect and extend the life of your rally mud flap set care must be taken during parking and reversing.

The mud flap set contains 4 flaps total for all four tires of the vehicle. Front flaps (4 mounting holes) – Rear flaps (3 mounting holes).

The mounting hardware consists of:

Quantity	Hardware Item	Item ID
10	Polygon Edge Clips	PolCI
12	Washers	Wash
10	Short Stainless Steel Screws	1SS
2	Long Stainless Steel Screws	1.5SS
2	Plastic Inserts	Ins
2	Spacers	5Sp

Recommended Tools: Short Phillips Screwdriver; Offset/Ratcheting Phillips; Flat head Screwdriver; Metal Pick

Front Mud Flap Installation

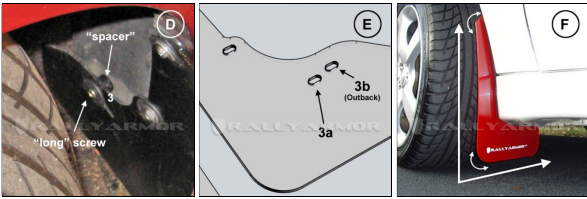
1. Begin by parking the vehicle on an even surface. Turn the steering wheel towards the side you are working on to gain access to the wheel well area. Remove OEM splash guard if present.
 2. Remove the 3 wheel well fasteners (#1-3) that secure the fender liner to the vehicle. To remove the fasteners, pop/unscrew the inner tab out of the assembly first then remove the complete assembly by prying the outer edges of the fastener (Figure A).
 3. Pull fender liner away from the body of the vehicle and position 3 polygon clips (PolCI), as shown, over mounting points #1, #2 and #3 (Figure B). Point #2 clip is installed behind skirt on fender. Carefully reinstall liner over the clips. Replace liner as previously installed confirming clip mounting holes are visible through liner.
- Tip:** Users with existing splash guards may also re use OEM clips with bolts for points 1 and 2 to mount.
4. Match front mud flap against the vehicle mounting points (#1-3) with logo facing the rear of the vehicle. Place a short screw (1SS) through a washer (Wash) and loosely thread mounting point #1. Do the same for mounting point #2. Users opting to use their existing hardware may also utilize their bolts with washer (Wash) (Figure C). **"Do not fully tighten"** as you will need to adjust the mud flap before tightening the screws.



5. To secure mounting point #3, place a spacer (5Sp) behind the mud flap. Place a long screw (1.5SS) through a washer (Wash) and loosely thread the corresponding mud flap slot. **"Do not fully tighten."** Adjustments will be made to the mud flap before tightening the screws (Figures D and E).

Note: Slot 3B is utilized on the Outback application. Hole 3A is for all other Legacy applications (Figure F).

6. Align mud flaps by walking away to view the mud flap from the rear of the vehicle. Confirm the edges of the flap are perpendicular to the ground. If needed, make slight adjustments by shifting the upper/lower portions of the flap. Check each adjustment by walking away from the vehicle and assessing the mud flap in relation to the ground and the body of the vehicle. After the flap is **correctly aligned**, tighten all hardware until snug (Figure F).



- ▲ **Tip:** The hardware is quite strong and self threading but over-tightening the clips beyond their limit is not recommended.
- ▲ **Tip:** To check any non-standard wheel clearance, turn the steering wheel from lock to lock while viewing the wheel well area at different intervals.

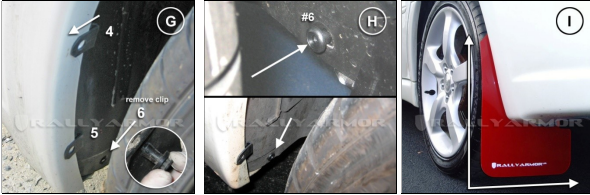
Rear Mud Flap Installation

- ▲ **Tip:** Although removal of the rear tire can ease installation, removal is not necessary. The installation can be completed using an offset screwdriver and jacking up the rear of the vehicle thereby lowering the wheel and facilitating access to the area for easier installation.

1. Remove OEM splash guard if present. Position two polygon clips (PoC) over outer rear mounting slots #4 and #5. Remove inner fastener located in the #6 slot. This fastener is removed by prying out the inner tab first then removing the outer assembly (Figure G).
2. Place insert (Ins) into mounting slot #6 until flush. (Figure H).
3. Place rear mud flap with logo facing the rear of the vehicle with the mud flap mounting holes aligned to the corresponding points on the vehicle. Thread short screws (SS) with washers through mud flap slots into rear mounting points #4, #5 and #6.

- ▲ **Do not fully tighten:** You will need to adjust the mud flap before tightening the screws.
- 4. Confirm the edge of the flap is perpendicular to the ground. If needed, make slight adjustments by shifting the upper or lower portions of the flap. Check each incremental adjustment by walking away from the vehicle and looking at the mud flap directly behind in relation to the ground and the body of the vehicle. When flap is correctly aligned, tighten all hardware only until snug (Figure I).

- ▲ **Tip:** The hardware is quite strong and self threading but over-tightening the clips beyond their limit is not recommended.
- ▲ **Tip:** The inner mounting slot #6 on the rear mud flap is extended to allow for installation on both Outback and other Legacy variations.



5. Repeat the instructions for the other side of the vehicle to complete mud flap installation.

Legacy III Installation P. Version 2.0- 31.11.2008