

Hardware included shown on right.

Tools required:

- 1/2" Standard socket
- 1/2" Wrench
- 3/8" nut driver
- Drill
- 5/16" Drill bit

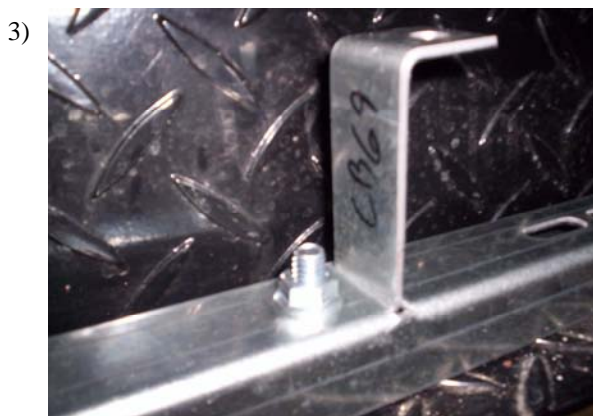
**DRILLING INTO VEHICLE IS REQUIRED!**



Measure from front wheel well back and make a mark at 10-1/2", 33-1/2", 55". At each mark, remove about a 1-1/4" wide piece of the cladding covering the pinch weld.



At each of the locations from step one, drill a 5/16" hole through the pinch weld. **(Different vehicle shown)**



Attach BT68 to each CB bracket with a 5/16" flanged nut and bolt as shown. **(Different BT bracket shown)**



Insert 5/16" flanged bolt through CB brackets and attach 5/16" retaining nut. Insert retaining nut into hole in underbody at pre measured locations, snug but don't tighten. CB58 at 10-1/2", CB59 at 33-1/2" CB60 at 55" locations.

5)



Insert a 5/16" flange bolt through pinch weld and BT68 and tighten with a 5/16" flanged nut. Tighten all nuts and bolts **(BT68 show on outside of pinch weld for picture purpose only bracket goes on inside of pinch weld)**

6)



Apply foam tape and step tread as shown in picture. Center step tread between the ends of the board and keep close to outside edge.

7)



8)

Repeat steps for opposite side.

Set the board on the brackets. Make sure the board is centered between the wheel wells and is aligned evenly down the side of the vehicle. Attach the board to the brackets with 3/4" long self drilling screws. Don't attach lip of board to vehicle.

9)

