

Hardware included shown on right.

Tools required:

- 1/2" socket
- 1/2" WRENCH
- Drill
- 3/8" nut driver
- 7/16" Socket

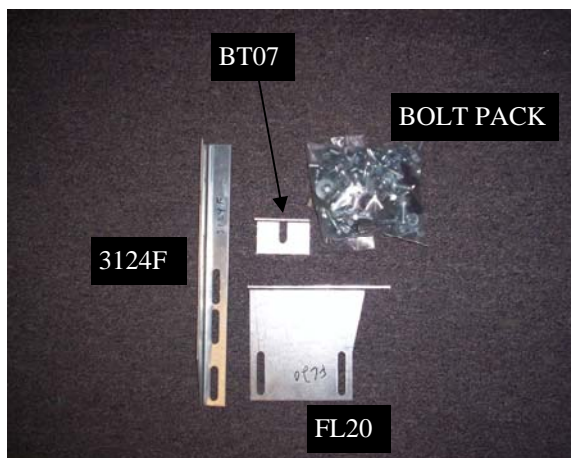
STD CAB  
QTY. PART

4 3124F  
4 BT07  
4 FL20

EXT CAB  
QTY. PART

6 3124F  
6 BT07  
6 FL20

**DRILLING INTO VEHICLE IS REQUIRED!**



1)



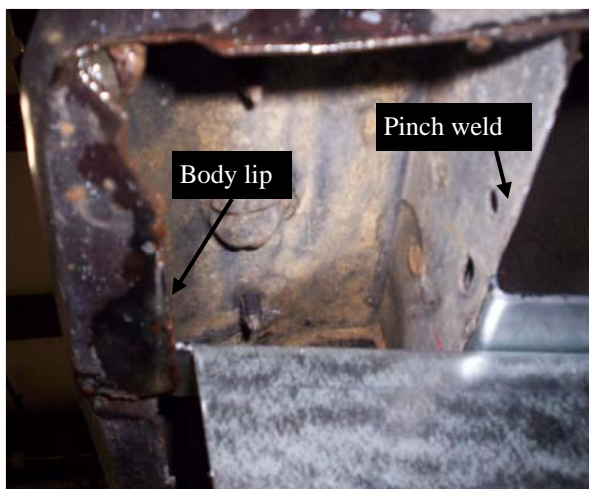
Measure from front wheel well back making a mark on the pinch weld at 16", 38" for STD cab and 16" 38" 62" for EXT cab.

2)



Assemble FL20 and BT07 with a 5/16 flanged nut and bolt as shown. Snug but don't tighten.

3)



Install BRKT assembly to vehicle by attaching FL20 on top of outer body lip, and BT07 behind the pinch weld.

4)



Insert a self tapping bolt through vehicle body lip into FL20 and tighten.

**For aluminum boards use steps 7,8,11. For ABS and TPO, use steps 9,10,11.**

5)



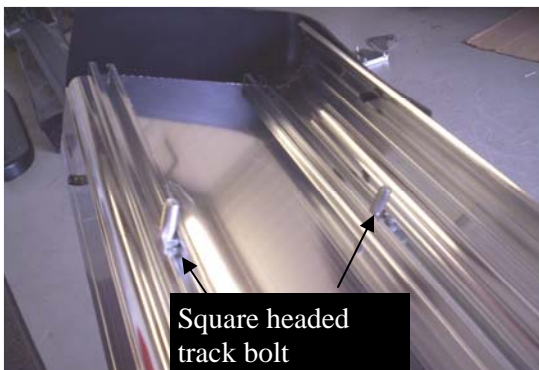
Insert a self tapping bolt through each hole in BT07 into the pinch weld and tighten bolts, next tighten 5/16" flanged nut and bolt.

6)



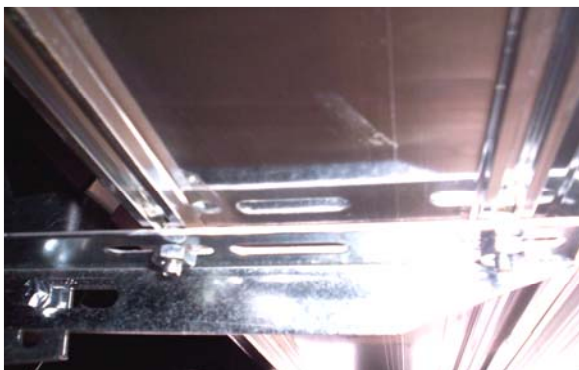
Attach one 3124F to FL20 using 5/16 bolts and nuts. Snug but do not tighten.

7)



For Aluminum Boards: Insert one square headed track bolt into both tracks for each bracket.

8)



Place the board on the brackets with the bolts through the slots. Fasten with 1/4" nuts.

9)



On ABS boards only, apply foam tape and step tread as shown in picture. Center step tread between the ends of the board and keep close to outside edge.

10)



For Molded Boards: Position board where you want it. Install self tapping bolts through bracket into the shoulder of the steel channel on the bottom of the board.

11) Level board and tighten all and any loose nuts and bolts. Repeat for other side.