

Hardware included shown on right.

There are extra components in the bolt pack

Tools required:

- 1/2" socket
- 7/16" socket
- 1/2" wrench
- 3/8" nut driver
- Drill

DRILLING INTO VEHICLE IS REQUIRED!



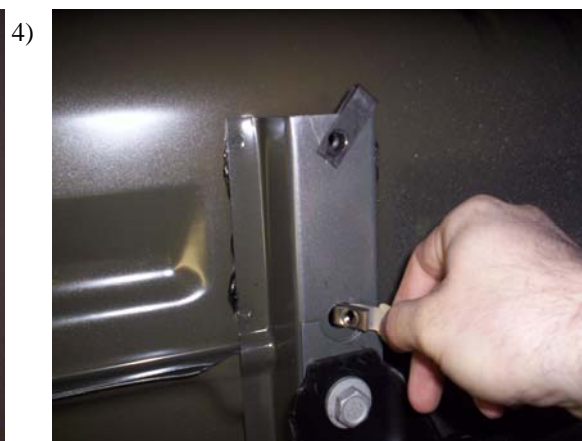
Locate the front bed cross member and install clip nut as shown in **Fig. 1**.



Attach the FL181 bracket to the front bed cross member support, using 5/16" bolt, as shown in **Fig. 2**. Next install self tapping screws into the other holes in the bracket to the cross member.

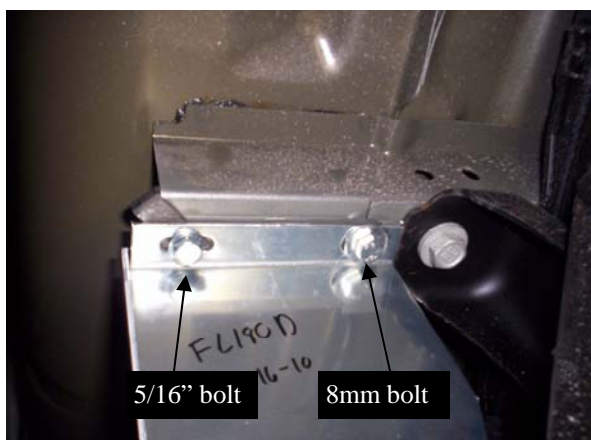


Cut trim lock to 9-3/4" and attach to FL180D & P as shown in **Fig 3**.



In front of rear wheel, above front leaf spring shackle, on the bed cross member, attach clip nut and 8mm pull nut, as shown in **Fig. 4**.

5)



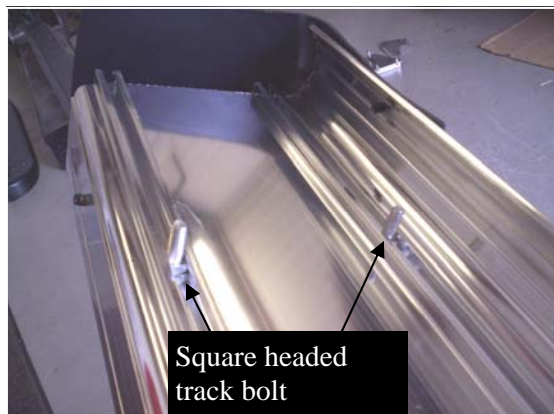
Install FL180D & P using 5/16" flanged bolt and 8mm bolt and washers, as in **Fig. 5**.

6)



Attach a 3124F angle bracket to the FL181 and FL180D & P with 5/16" bolts and nuts. Snug but do not tighten at this time.

7)



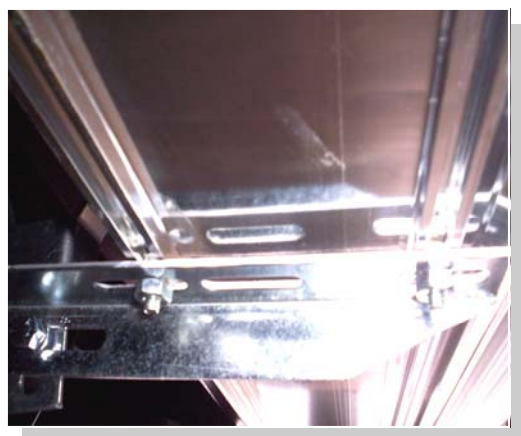
Insert one square headed track bolt into both tracks for each bracket.

8)



Attach stone guard and end cap to running board using 3/8" self threading bolts.

9)



Place the board on the brackets with the bolts through the slots. Fasten with 1/4" nuts.

10)



Make sure board is lined up with cab board. Use one self drilling screw to attach the stone guard to the fender lip. Make sure the board is level, then use remaining 2 screws to finish attaching stone guard to fender lip.



Alum Box Boards

IN423

2007-C Chevy/GMC FS PU
OC7438EX, OC7438EXB
OC8438EX, OC8438EXB

11)



Tighten any and all loose bolts. Repeat all steps for opposite side.