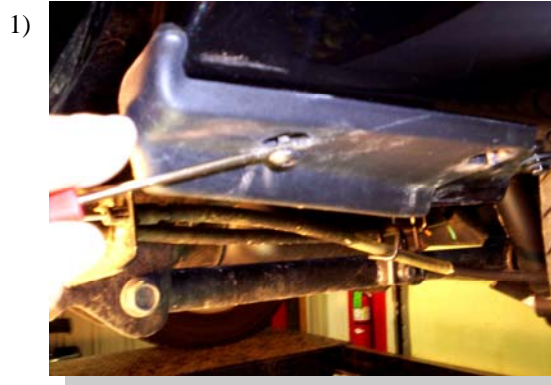
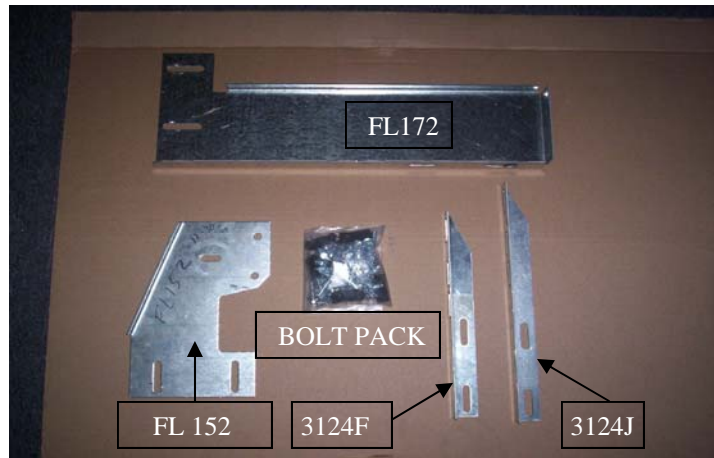


Hardware included shown on right.

DRILLING INTO VEHICLE IS REQUIRED!

Tools required:

- 1/2" socket
- 1/2" wrench
- 5/16" nut driver
- Drill
- 5/16" Drill bit
- 3/8" nut driver



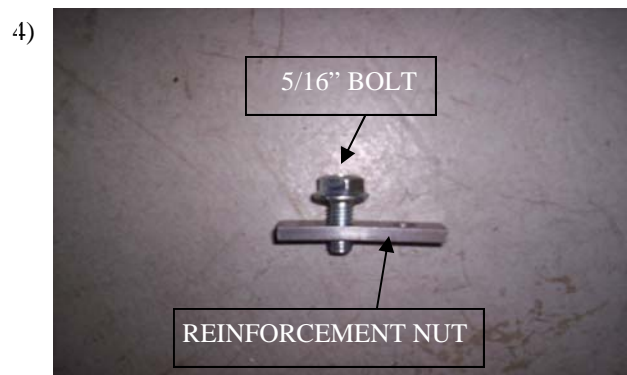
Remove the plastic edge protector on the front edge of the box. To remove, use a small screw driver to pull out the push pin. Remove and discard.



Locate the holes in the front bed sidewall support.



Attach the FL152 bracket to the box sidewall support using 5/16" bolts and nuts.



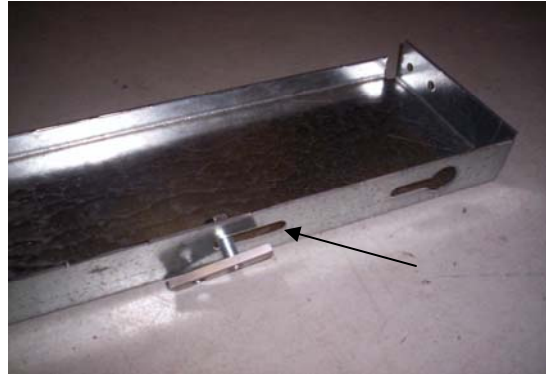
Thread 5/16" bolt into the hole that's closest to center as shown in **FIG# 4**.

5)



In front of the rear wheel you'll see a frame support that the bed cross member bolts to. Install bolt head with reinforcement nut through top slot as shown above **FIG# 5**

6)



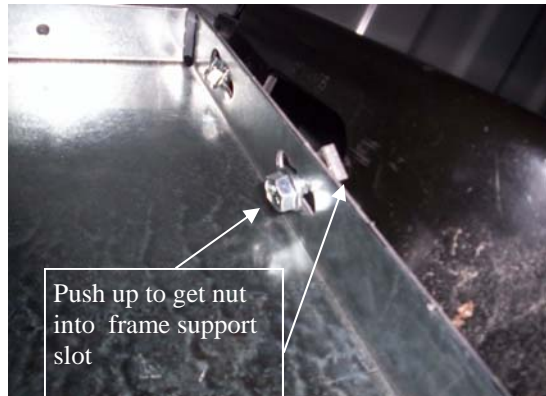
Insert 5/16" bolt through lower slot on FL172, Then thread bolt into center hole of reinforcement nut as shown above **FIG# 6**

7)



Take FL172 with nut attached as in step 6, and insert the large keyhole slot over the bolt head **FIG # 5**, angling the FL172 to allow access to rear of bolt through large frame support slot. You will need to reach through large slot and hold the bolt from falling into frame support. Push up on bracket when head is through key hole slot.

8)



Once the FL172 is pushed up you'll need to push the lower bolt up in the slot and turn the reinforcement nut to fit into large slot in frame support. Make sure reinforcement nut is catching frame support, straighten and push up bracket then snug lower bolt.

9)



Once bracket is straight tighten upper bolt, you may need to insert a small screwdriver into slot as shown **FIG # 9** to keep nut from turning. Then tighten lower bolt.

10)



Bracket should look like this when installed correctly

11)



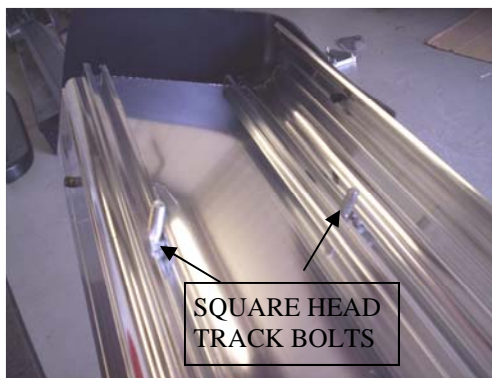
At the top of the bracket you will see 2 holes, straighten bracket and install 2 self drilling screws.

12)



You are now ready to attach angles to installed brackets using 5/16" bolts and nuts, snug for now. The longest angle should be attached to the front FL152 and the shortest to the rear FL172. If you are having trouble lining up the box board with the cab board, you can change these angles around for a better line up if needed.

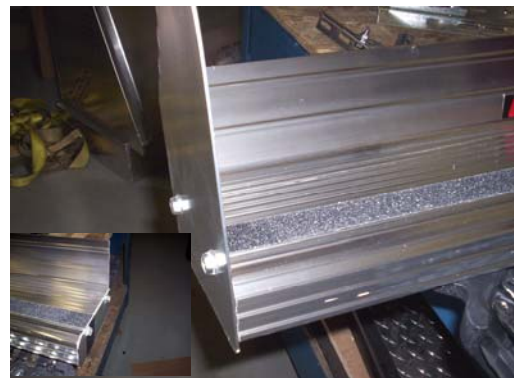
13)



SQUARE HEAD
TRACK BOLTS

Insert two square headed track bolt into each track on the bottom of the board

14)



Attach stone guard and end cap to running board using 3/8" self threading bolts.

15)



Place the board on the brackets with the bolts through the slots. Fasten with 1/4" nuts. Straighten and level board, tighten bolts and nuts.

16)



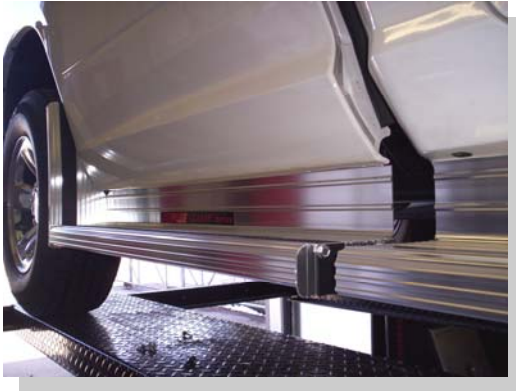
Using self drilling screws attach the stone guard to the fender lip. Make sure the board is level.



ALUMINUM BOX BOARD

2010 DODGE RAM 1500 ONLY
8' BED

IN419



Tighten any and all loose bolts. Repeat all steps for opposite side.