

Tools required:

- 1/2" wrench
- 1/2" socket, 3/8" nut driver
- Drill, 5/16" drill bit
- Phillips & Straight Screw driver

- 1) On the drivers side bottom of the plastic cladding remove and save 6 to 7 Phillips head screws as shown in **FIG. 1**. This will allow drilling and bolt placement without damaging the cladding. Keep screws as they will have to be replaced when finished. On the back underside of the rocker panel, there are 3 rubber plugs as shown in **FIG. 2**. Remove these plugs.
- 2) Insert a 5/16" bolt through the top hole of bracket and thread it into reinforcement nut as shown in **FIG. 3**. Insert the reinforcement nut into hole as shown in **FIG. 4**, straighten bracket, push it up as high as you can, then snug up the bolt.
- 3) You will need to pry down and stick a screw driver handle between the cladding and the body as shown in **FIG. 5**. This will help you keep from drilling through plastic cladding. You can now drill 5/16" hole through pinch weld as shown in **FIG. 6**, being careful to not drill through plastic cladding.

1)



2)



3)



4)



5)



6)

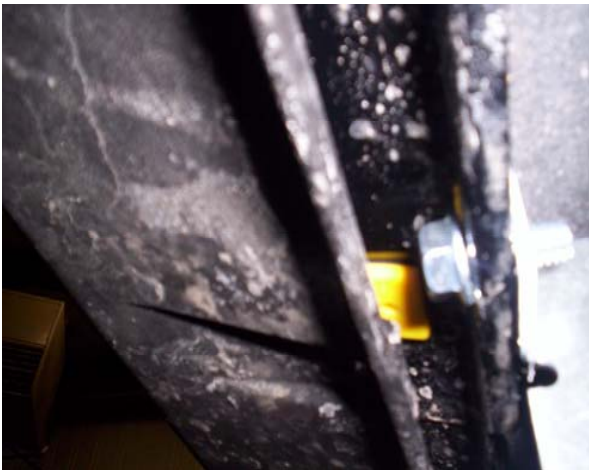


4) Pry back cladding and insert 5/16" bolt through pinch weld and bracket flange slot as shown in **FIG. 7**. Thread on 5/16" nut, making sure bracket is up as high as it can go. Tighten both bolts. Repeat above steps to the other 2 brackets. After this is complete, re-install all factory Phillips screws back into cladding. When this is done you will have 3 brackets mounted as shown in **FIG. 8**.

5) Apply foam tape to rear upper edge of plastic boards as shown in **FIG. 9**, being sure to wipe off surface before applying tape. Set board on top of mounted brackets as shown in **FIG.10**. Center board from left to right and make sure it is straight (in and out) with the vehicle's body.

6) Once board is positioned where you want it, use self tapping screws and screw through all brackets to steel channel under board as shown in **FIG. 11**. If you cannot get a drill under vehicle you can mark the channel with a marker and remove board and run screws into channel and remove them, then re-install when board is in place. Clean stepping surface and apply rubber step tread making sure to center left to right and keep as close to outside surface as possible. When this is completed, repeat on other side of vehicle.

7)



8)



9)



10)



11)



12)

