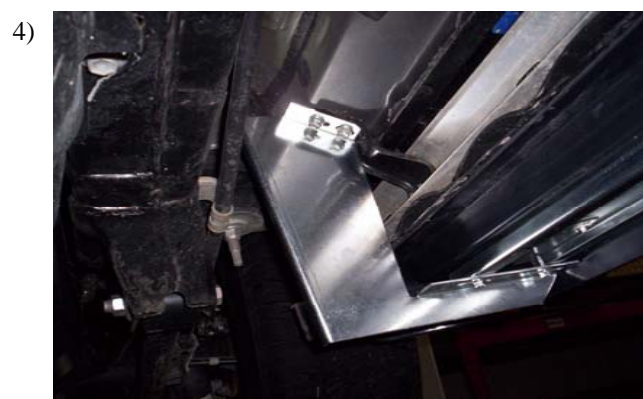
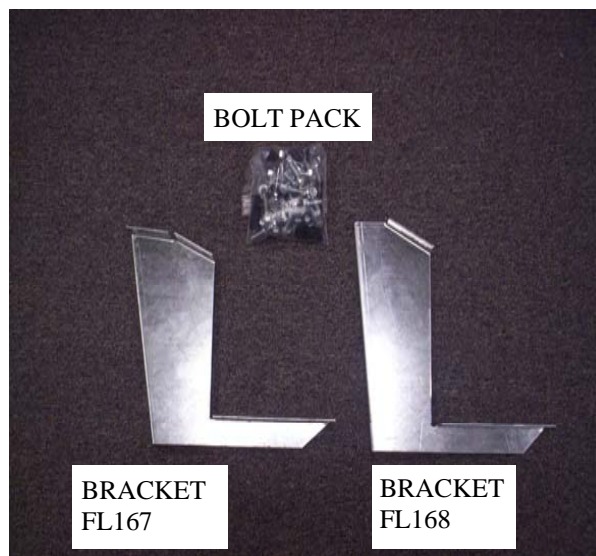


- 1) **ONLY REMOVE BOLTS FROM ONE FACTORY ROCKER BRACKET AT A TIME.**
- 2) Remove factory bolts from front rocker bracket, as shown in **Fig. 1**. Install bracket FL167 as shown in **Fig. 2**, using the factory bolts you removed from the front rocker bracket, as in **Fig. 1**.
- 3) Remove factory bolts from center rocker bracket, as shown in **Fig. 3**. Install bracket FL168 as shown in **Fig. 4**, using the factory bolts you removed from the center rocker bracket, as in **Fig. 3**.
- 4) Remove factory bolts from rear rocker bracket, as shown in **Fig. 3**. Install bracket FL168 as shown in **Fig. 4**, using the factory bolts you removed from the rear rocker bracket, as in **Fig. 3**.

Tools required:

- 13mm socket, 3/8" nut driver
- 5/16" nut driver



- 4) Before installing running board, you need to install the supplied D-Foam gasket as shown in **Fig. 5** on molded boards only.
- 5) When aligning the running board on the brackets, position board so it is flush with rear stone guard, as shown in **Fig. 6**.
- 6) Install molded boards using the self tapping screws from the bolt pack, as shown in **Fig. 7**
- 7) To install aluminum board, insert the square headed track bolts into the channels on the bottom of the board, as shown in **Fig. 8**. Place board on top of brackets and align with vehicle body. Tighten bolts using the supplied flat washer, lock washer and 5/16" nut.

