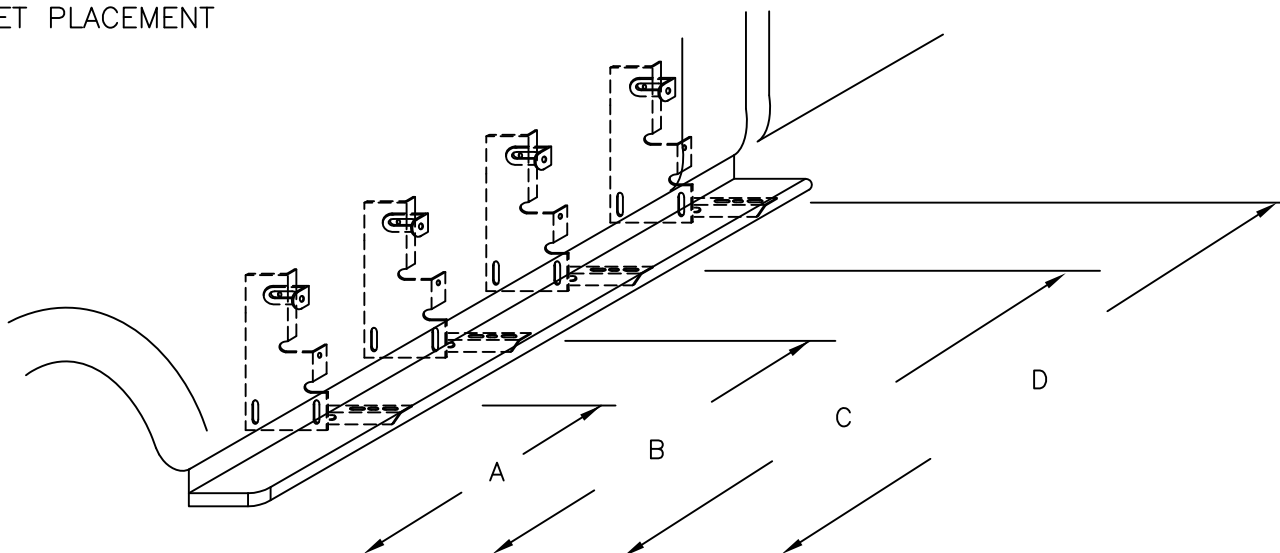


**TOOLS REQUIRED:** 23/64" DRILL \* 1/2" HEX SOCKET \* 1/2" WRENCH \* 5/16" NUT DRIVER \* 3/8" NUT DRIVER

BRACKET MOUNT USES FACTORY HOLES AND HOLES THAT NEED TO DRILLED IN THE PINCH WELD

## ① BRACKET PLACEMENT



MEASURE FROM FRONT WHEEL WELL TO BRACKET LOCATION  
MARK THIS DIMENSION ON THE PINCH WELD

(DRIVERS SIDE SHOWN)

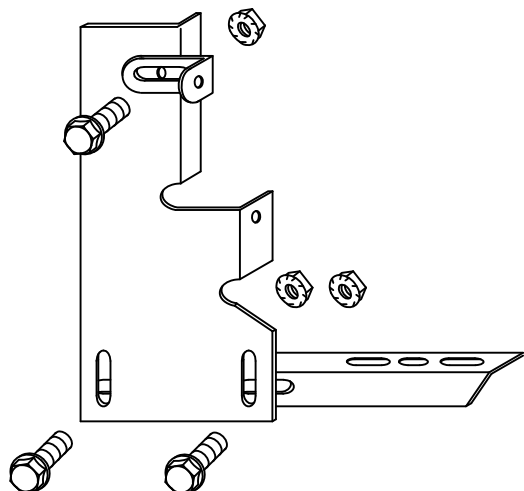
STANDARD CAB: A=15" B=42"

EXTENDED CAB: A=18" B=34" C=58"

CREW CAB: A=18' B=34" C=56" D=76"

## ②

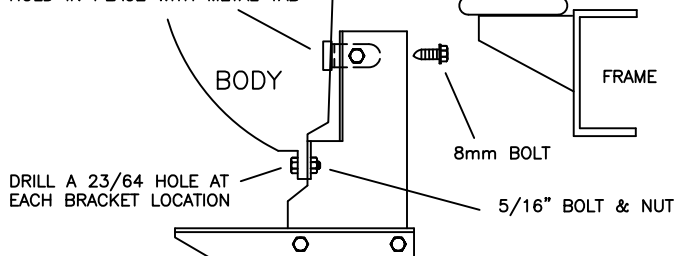
BRACKET ASSEMBLY  
ASSEMBLE WITH 5/16" BOLTS & NUTS



## ③

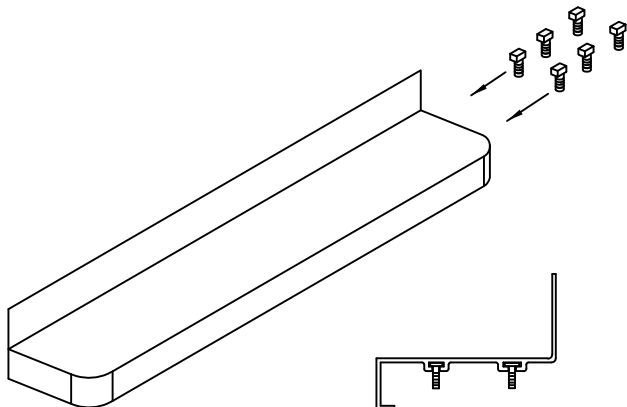
MOUNT BRACKET ASSEMBLY TO BODY  
BY INSERTING A BLIND NUT INTO  
THE FACTORY HOLE AND FASTEN WITH 8MM BOLT.  
USE 5/16" BOLT AND NUT  
IN PINCH WELD HOLE.

INSERT BLIND NUT IN HOLE  
HOLD IN PLACE WITH METAL TAB



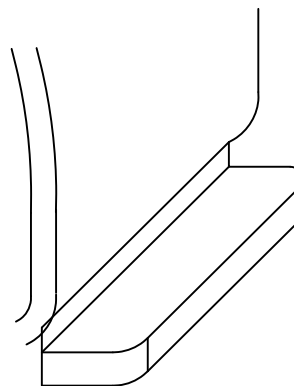
MOUNT AT LOCATION SHOWN AT ①

- ④ **\*\*ALUMINUM BOARDS ONLY\*\*** FOR PLASTIC BOARDS GO TO STEP 7.



FOR EACH BRACKET  
SLIDE ONE 1/4" X 5/8"  
SQUARE HEAD SCREW  
INTO EACH TRACK,

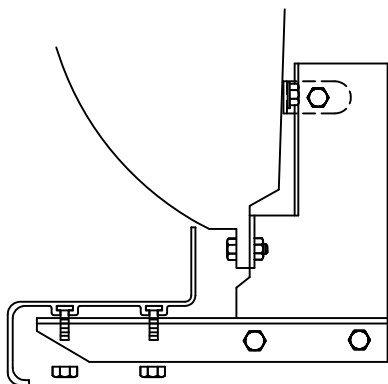
⑤



HOLD THE BOARD IN PLACE WITH IT  
RESTING ON THE BRACKETS.

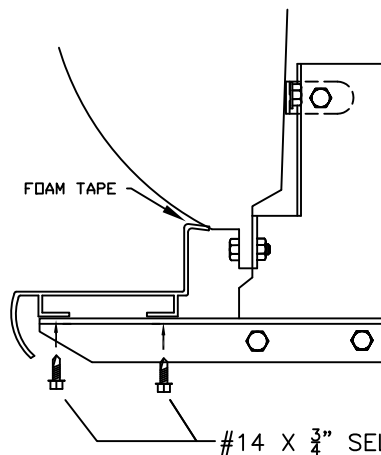
BE SURE THAT THE 1/4" BOLTS ARE PLACED  
INTO THE SLOTS IN THE BRACKET STEP SUPPORT

⑥



SECURE BOARD TO BRACKET  
WITH 1/4" NUTS

⑦



FOR PLASTIC BOARDS, APPLY FOAM  
TAPE AND STEP TREAD TO BOARD.  
ATTACH THE BOARD TO THE BRACKETS  
WITH SELF DRILLING SCREWS.

⑧

WITH BOARD LEVEL TIGHTEN  
ALL LOOSE BOLTS

REPEAT FOR OTHER SIDE