

Hardware included shown on right.

Tools required:

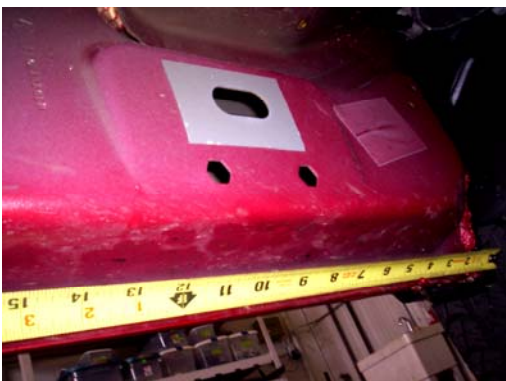
- 1/2" socket
- 1/2" wrench
- 5/16" nut driver
- Drill
- 23/64" Drill bit

DRILLING INTO VEHICLE IS REQUIRED!



NOTE CREW CAB SHOWN IN PHOTOS!

1)



Measure from front wheel well back and make a mark at :
Std Cab— 10" & 55"
Quad Cab—10", 35", 55" & 66"
Crew Cab—10", 35", 55" & 76"

2)



At each of the locations from step one, drill a 23/64" hole through the pinch weld.

3)



Assemble brackets as shown using one long 5/16" bolt and steel retaining nut. (FL146 shown)

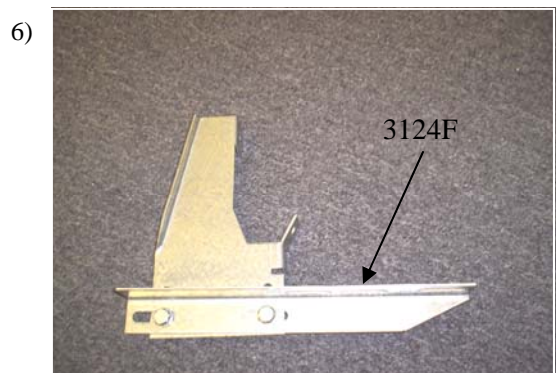
4)



Attach brackets to vehicle by inserting the retaining nut in the factory obround hole and using one 5/16" bolt and nut through the pinch weld. Use the FL145 brackets in the forward locations and the FL146 in the rear most location. (No FL146 is used or included for Std cab models).



It may be necessary to use a small screw driver to hold against the retaining nut to keep it from turning while tightening the bolt.



Attach one 3124F to each bracket using 5/16 bolts and nuts. Snug but do not tighten.



Apply foam tape to top edge of the board.



Place the board on the brackets and align up on the vehicle. There is a driver and a passenger side board. Attach to the brackets using #14 X 3/4" long self drilling screws.



Level the board and tighten all bolts.
Repeat steps for the opposite side.

NOTE: There are no brackets to attach the 3171 full length board to the box as this is not intended to be a stepping area.