

Hardware included shown on right.

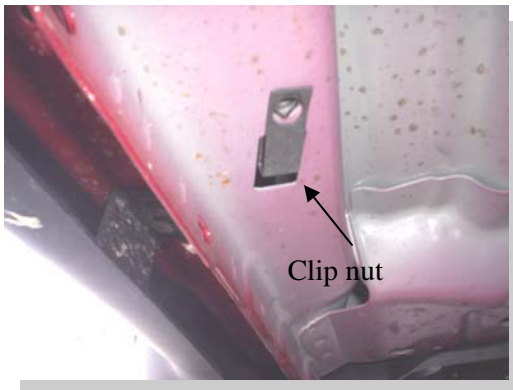
Tools required:

- 1/2" Standard socket
- 1/2" Wrench
- 5/16" nut driver
- Drill

-Painting your Premier board is not necessary. The board is made with UV protected TPO plastic that will resist fading and cracking from the sun.

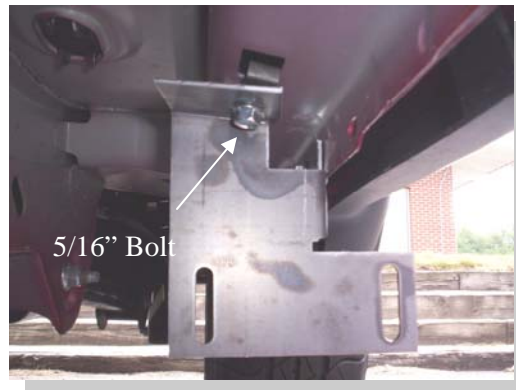


1)



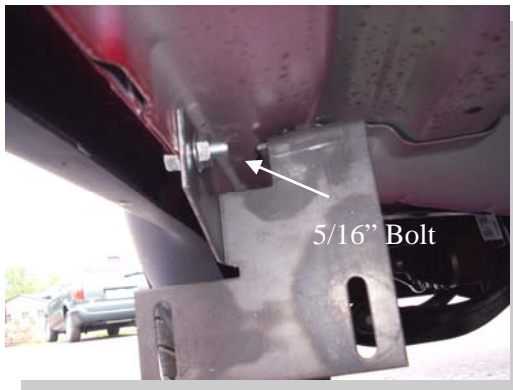
Insert clip nut as shown in factory holes at 15", 38" and 61" on underside of vehicle.

2)



Attach FL122 using one 5/16" bolt into clip nut.

3)



Use one 5/16" bolt and nut through FL122 and factory hole in pinch weld.

4)



Attach angle support (3124F) to FL122 using 5/16" bolts and nuts. Snug but do not tighten at this time



Owens Premier Board

IN376

2008- C Jeep Liberty  
Product number 67066  
12-23-08

5)



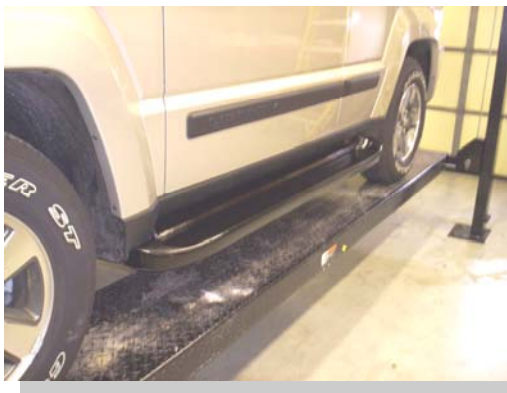
Apply foam tape to the top edge of the running board. Remove the white protective paper before attaching to vehicle.

6)



Place the board on the brackets. Attach with 3/4" long self drilling screws. Level board and tighten all bolts.

6)



Apply step tread and logo. Repeat steps for opposite side.

