

Hardware included shown on right.

Tools required:

- 1/2" Standard socket
- 1/2" Wrench
- 5/16" nut driver
- Drill
- 23/64" Drill bit

-Painting your Premier board is not necessary. The board is made with UV protected ABS plastic that will resist fading and cracking from the sun.

DRILLING INTO VEHICLE IS REQUIRED!



1)



Measure from front wheel well back and make a mark at 11 1/2" (13" on passenger side), 26", 43" and 59". At each mark, remove about a 1-1/4" wide piece of the cladding covering the pinch weld.

2)



At each of the locations from step one, hold a bracket up and mark the center of the hole. Remove the bracket and drill a 23/64" hole through the pinch weld.

3)

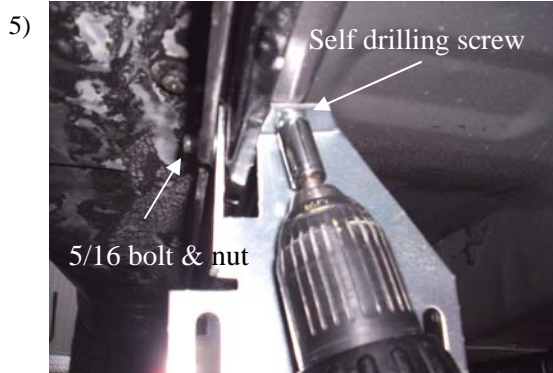


On the drivers side at the 11 1/2" location remove the upper bolt shown on the vehicle frame. Do not discard.

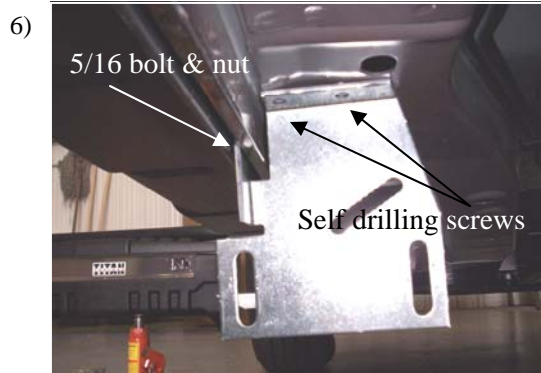
4)



Assemble FL123 to BT54 as shown. Using a 5/16" bolt and nut attach the bracket to the pinch weld and the BT54 to the body using the bolt removed in step 3.



Attach an FL123 to the 26" location using one 5/16" bolt and nut through the pinch weld and one 3/4" long self drilling screw.



Attach FL141 at 43" and 59" locations with one 5/16" bolt and nuts and two self drilling screws.



Attach one 3124F to each bracket with 5/16" bolts and nuts. Snug but do not tighten at this time



Remove the small stone protector that is in front of the rear wheel. This will not be re-used.



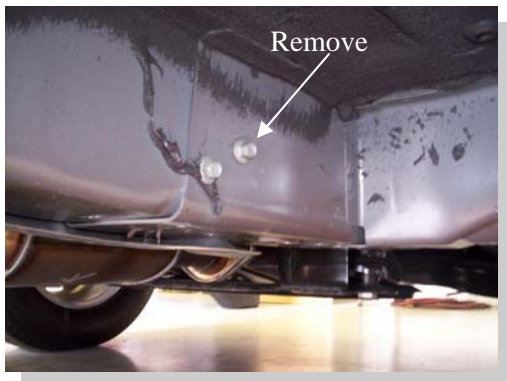
Install step tread and foam tape to the board.



Set the board on the brackets and level. Make sure the board is centered between the wheel wells and is aligned evenly down the side of the vehicle. Tighten the brackets to hold the board in place. Attach the board to the brackets with 3/4" long self drilling screws.

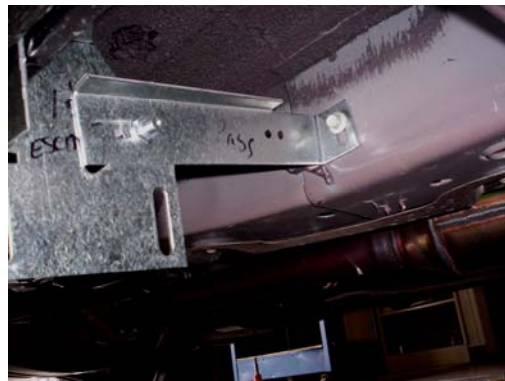
Passenger Side

11)



On the passenger side at the 13" location remove the upper bolt shown on the vehicle frame. Do not discard.

12)



Assemble FL123 to BT55 as shown. Using a 5/16" bolt and nut attach bracket to the pinch weld and the BT55 to the body using the bolt removed in step 5.

13) Repeat steps 5-10 for passenger side.

