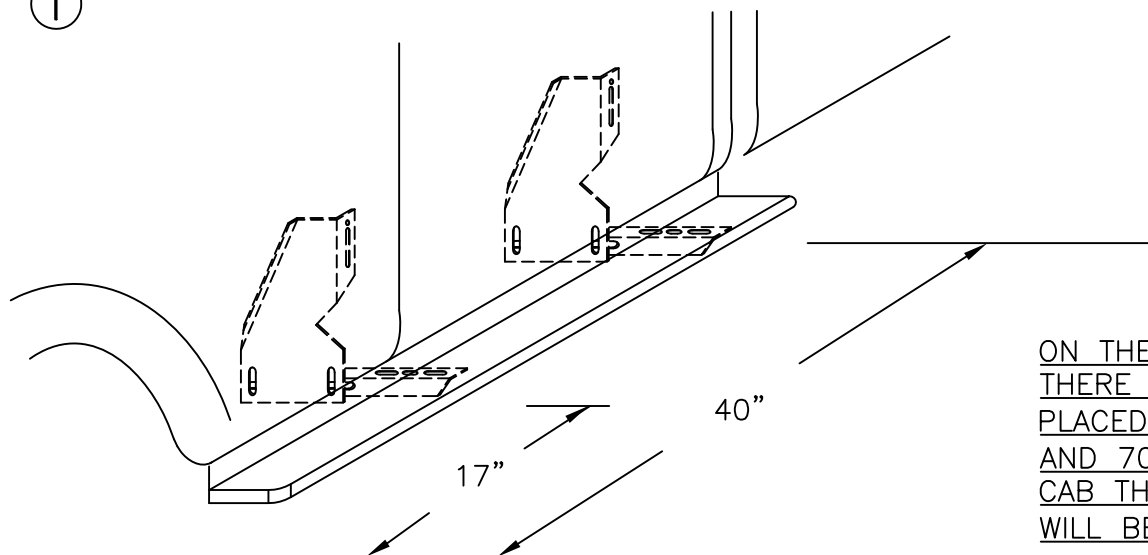


07-CURRENT GMC/CHEVY ALL MODELS

TOOLS REQUIRED: 5/16" DRILL * 1/2" HEX SOCKET * 1/2" WRENCH * 5/16" NUT DRIVER * 3/8" NUT DRIVER

PLEASE READ ALL INSTRUCTION PRIOR TO STARTING INSTALL.

①



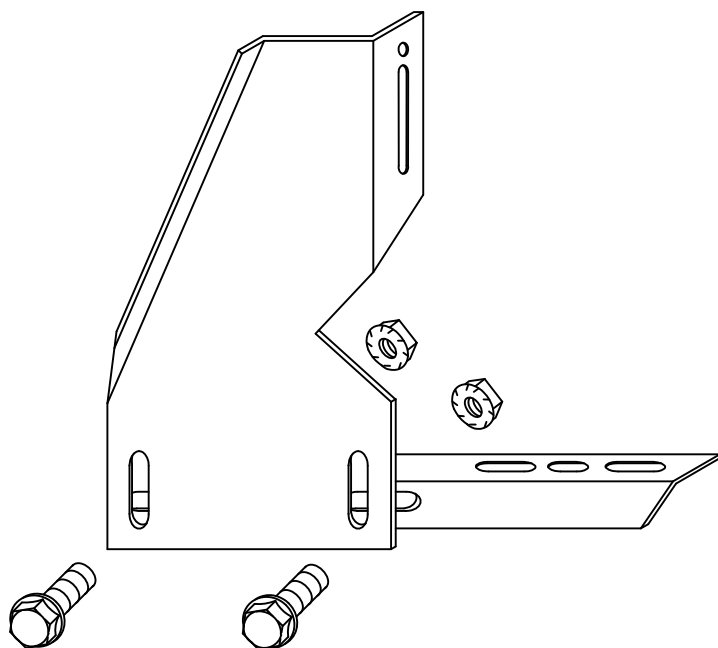
ON THE EXTENDED CAB
THERE WILL BRACKETS
PLACED AT 17", 40", 53"
AND 70" ON THE CREW
CAB THE LAST BRACKET
WILL BE AT 77".

MEASURE FROM FRONT WHEEL WELL TO BRACKET LOCATION
MARK THIS DIMENSION ON THE PINCH WELD

(STANDARD CAB SHOWN)

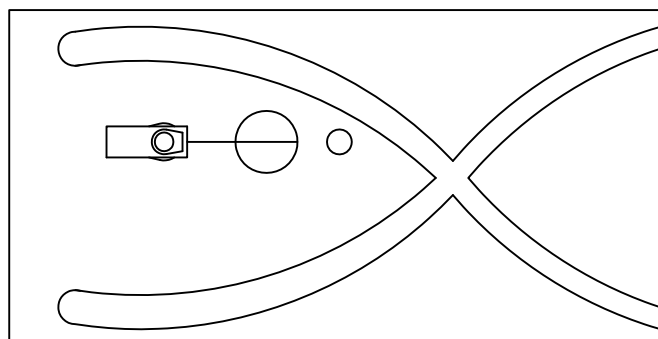
②

BRACKET ASSEMBLY:
ASSEMBLE WITH 5/16" BOLTS

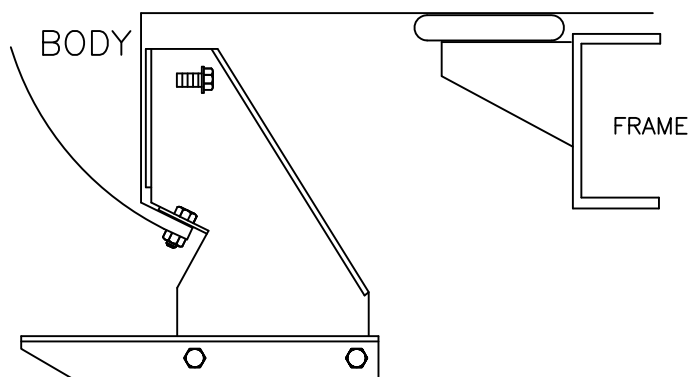


③

DEPENDING ON CAB STYLE, REMOVE
RUBBER PLUGS AT MEASURED
LOCATIONS AND INSTALL CLIP NUT AS
SHOWN. OTHERS WILL HAVE FACTORY
MOUNTED NUTS AND WILL USE THE
8MM BOLT INCLUDED WITH THE
BRACKETS.

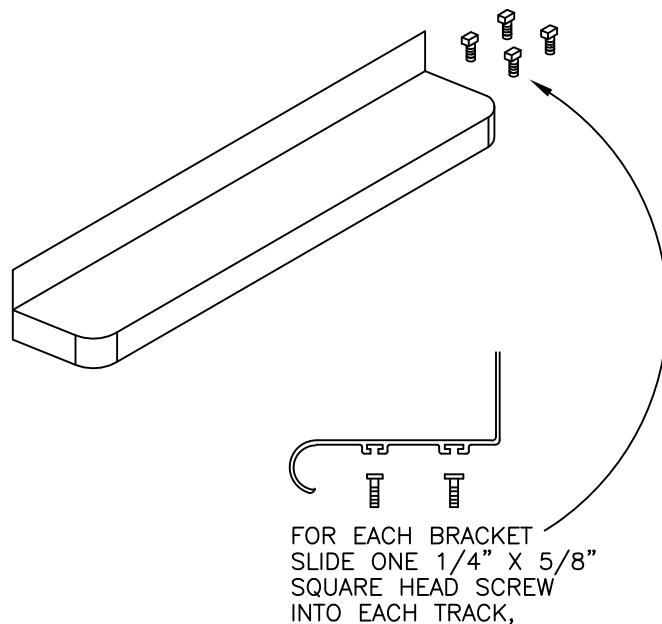


- ④ MOUNT BRACKET ASSEMBLY TO THE BODY WITH $\frac{5}{16}$ " BOLTS AND NUTS THROUGH HOLES IN THE PICH WELD AND $\frac{5}{16}$ " BOLT INTO THE CLIP NUT OR 8MM BOLT INTO FACTORY NUT.

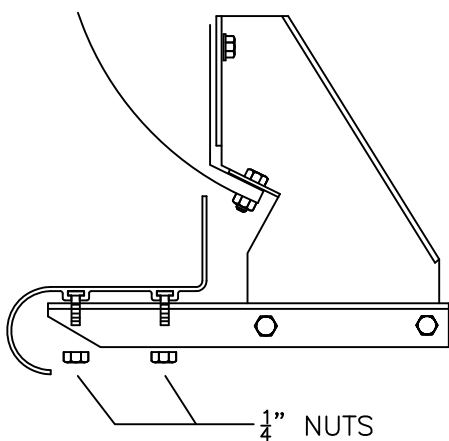


MOUNT AT LOCATIONS SHOWN AT ①

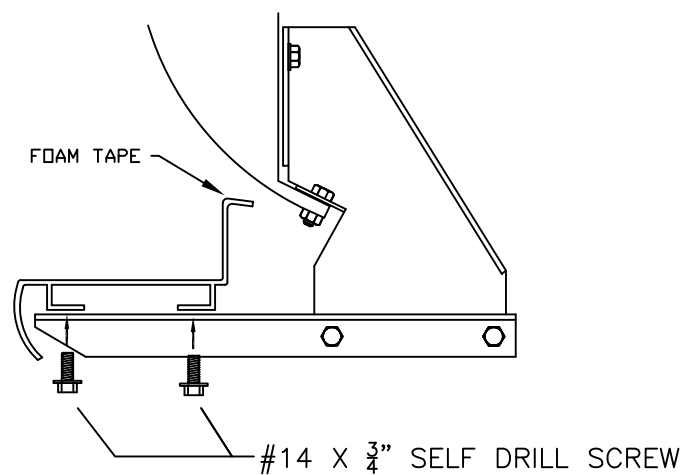
- ⑤ ****ALUMINUM BOARDS ONLY**** FOR PLASTIC BOARDS GO TO STEP 7.



- ⑥ PLACE BOARD ON BRACKETS AND LEVEL. FASTEN WITH $\frac{1}{4}$ " NUTS AND TIGHTEN.



- ⑦ FOR PLASTIC BOARDS, APPLY FOAM TAPE AND STEP TREAD TO BOARD. ATTACH THE BOARD TO THE BRACKETS WITH SELF DRILLING SCREWS.



- ⑦ TIGHTEN ANY LOOSE BOLTS AND REPEAT STEPS FOR OPPOSITE SIDE.