



Please read all instructions prior to starting install.

No drilling into vehicle is required.

Hardware included shown on right.

Tools required:

- 1/2" Standard socket
- Tape measure
- Drill
- 3/8" Nut driver

Painting your OFB board is not necessary. The board is made with UV protected TPO plastic that will resist fading and cracking from the sun.

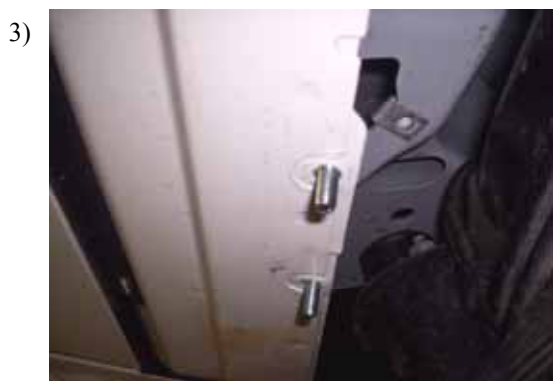


Measure from the front wheel well rearward. At locations 12", 34 1/2" and 63" is where the brackets will be attached. There are factory holes at these locations.

Note :This photo is not of the Explorer.



At each measured location insert one clip nut into factory holes as shown.



Insert one 5/16" flanged bolt through each factory hole along the pinch weld.



Assemble the **FL137** and **CB40** together using 5/16" bolts and nuts.

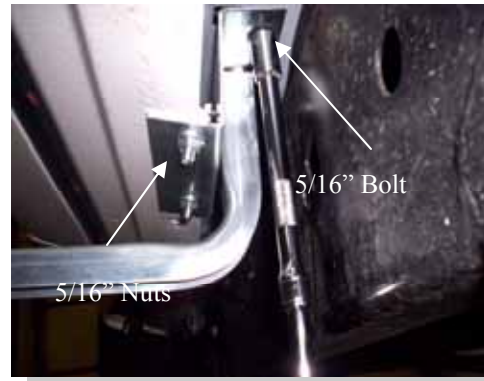


5)



Assemble the **FL138** and **CB41** together using 5/16" nuts and bolts.

6)



Attach the **FL137** and **CB40** assembly at the front bracket location. Use one 5/16" bolt into the installed clip nut and 5/16" nuts on the installed bolts.

7)



Attach the **FL138** and **CB41** assembly at the middle and rear bracket locations. Use one 5/16" bolt into the installed clip nut and 5/16" nuts on the installed bolts.

8)



Brackets on vehicle.

9)



Place the 68007D board on driver side brackets and attach using 3/4" long self drilling screws.

10)



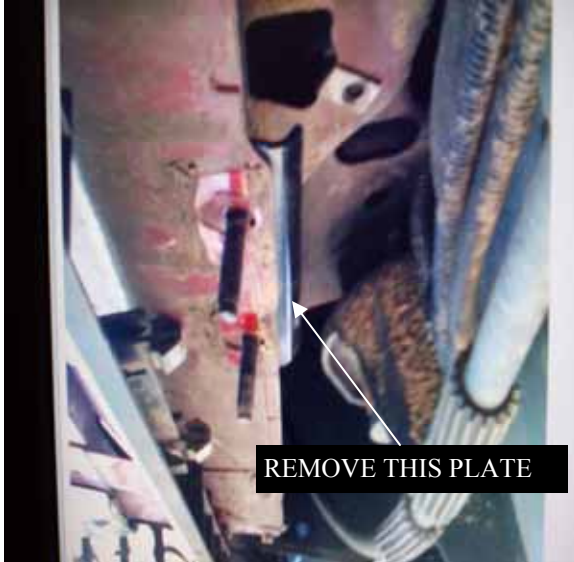
Repeat steps on the opposite side using the 68007P board.



PLEASE READ:

IF YOUR VEHICLE HAS FACTORY RUNNING BOARDS MOUNTED ON IT AND YOU ARE REPLACING THEM WITH OWENS BOARDS.

5)



If your vehicle already has or had factory running boards installed on it, you'll need to remove the bolt stud plate shown above to allow room for Owens brackets.

6)



There are 2 bolts that need removed above and to the rear of bracket. They use a T-40 TORX bit. Bolts shown above.

Once these brackets are taken off the vehicle, you can go back to the first 2 pages of the instructions and install your boards.