

Hardware included shown on right.

Tools required:

- 12mm socket
- 1/2" wrench
- 1/2" socket
- 5/16" nut driver

-Painting your running board is not necessary nor is it recommended as there is no step tread to protect the painted stepping area. The board is made with UV protected TPO plastic that will resist fading and cracking from the sun.

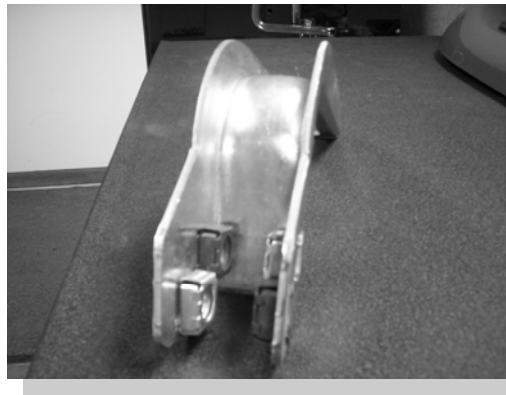


- 1) Remove factory bolts at 12 1/2", 35", 57" and 72" (82" on Crew Max) on underside of body. Install FL113 at front location and FL114 at other locations with previously removed bolts. Use 1 supplied 8mm bolt in each forward bracket location.
- 2) Snap clip nuts into channel brackets.
- 3) Using supplied 5/16" bolts attach channel brackets (CB32) to flat brackets installed in step 1. Snug but do not tighten.
- 4) Place board on channel brackets. Center board on vehicle. Attach with #14 X 3/4" self-drilling screws through slots in CB brackets into bottom of board.
- 5) Level the board and tighten all loose bolts.

1)



2)



3)



4)



5)



6) Repeat all steps for opposite side.