

Hardware included shown on right.

Tools required:

- 12mm socket
- 1/2" wrench
- 1/2" socket
- 5/16" nut driver

-Painting your GlaSteps. To insure a proper paint finish, use a top quality auto paint system and follow the manufacturers instructions. Your GlaStep should be sanded and primed before painting.

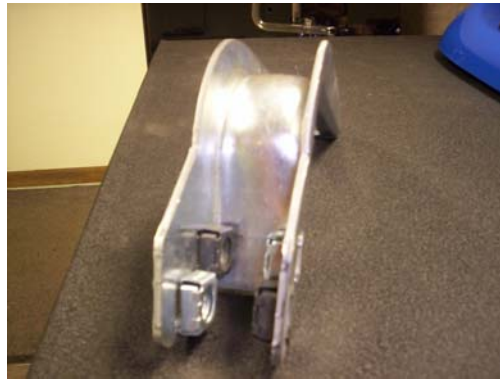


- 1) Remove factory bolts at 13 1/2", 39" and 59 1/2" on underside of body. Install FL113 at front location and FL114 at middle and rear locations with previously removed bolts.
- 2) Snap nuts into channel brackets.
- 3) Using supplied 5/16" bolts attach channel brackets to flat brackets installed in step 1. Snug but do not tighten.
- 4) Center step tread on board and remove backing on tape to adhere to board. Apply Owens logo.
- 5) Place board on channel brackets. Center board on vehicle. Attach with #14 X 3/4" self-drilling screws through slots in CB brackets into bottom of board.
- 6) Tighten all loose bolts.
- 7) Repeat steps 1-6 for opposite side.

1)



2)



3)



4)



5)



6)

