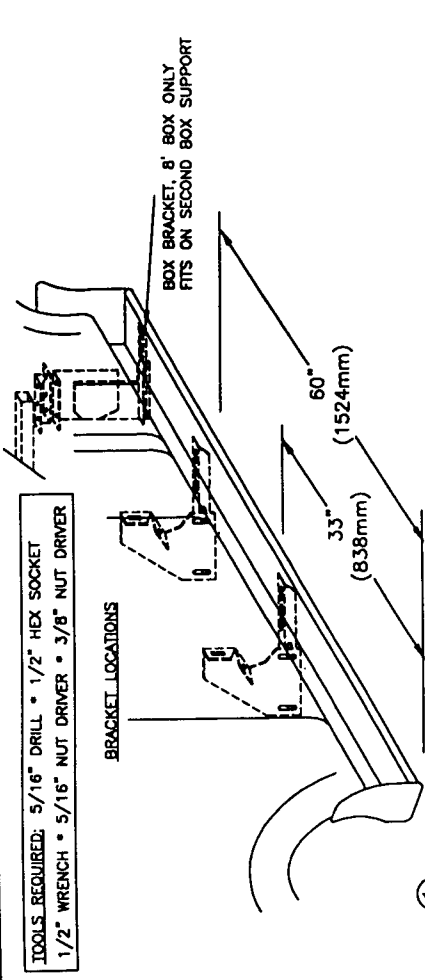




**04-CURRENT F150 STANDARD CAB F.L., 6 1/2' & 8' BEDS** IN259 11/21/03

**SOME BRACKETS INSTALL IN FACTORY HOLES**

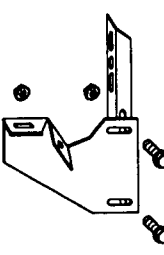
| INSTALLATION | QTY./6' & 8' | DESCRIPTION                          |
|--------------|--------------|--------------------------------------|
| PARTS LIST:  |              |                                      |
| 1            | 1            | RUNNING BOARD 1 DRIVER & 1 PASSENGER |
| 4            | 2            | STONE GUARD 2 LEFT & 2 RIGHT         |
| 8            | 3/8"x1       | SELF TAPPING SCREW                   |
| 12           | #14x3/4"     | SHEET METAL SCREW                    |
| 8/12         | 1/4"x5/8"    | SQUARE HEAD SCREW                    |
| 8/12         | 1/4"-20      | HEX NUT                              |
| 4/6          | #14 X 3/4    | TEK SCREW                            |



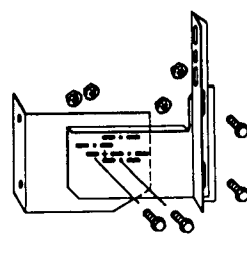
**TOOLS REQUIRED:** 5/16" DRILL • 1/2" HEX SOCKET  
1/2" WRENCH • 5/16" NUT DRIVER • 3/8" NUT DRIVER

**1 (DRIVERS SIDE SHOWN)**  
MEASURE FROM FRONT WHEEL WELL TO BRACKET LOCATIONS. MARK THIS DIMENSION ON THE PINCH WELD

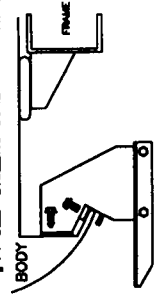
**2** CAB BRACKET ASSEMBLY ASSEMBLE WITH 5/16" BOLTS



BOX BRACKET ASSEMBLY, 8' BOX ONLY ASSEMBLE WITH 5/16" BOLTS

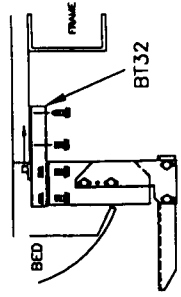


**3** 6 1/2" & 8" BOX BRACKET MOUNTING BRACKET ASSEMBLY MOUNT TO BODY DRILL THROUGH PINCH WELD WITH A 5/16" DRILL ASSEMBLE WITH 5/16" BOLTS AND #14 SELF DRILLING SCREW AT 33" & 60"

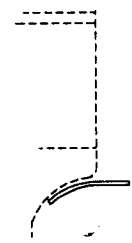


8' BED...REAR BRACKET  
PREDRILL A 5/16" HOLE NEAR THE END OF THE CROSSBRACE. SLIDE NUT CLIP INTO END OF CROSS BRACE

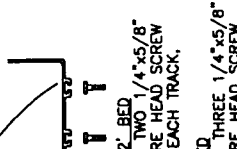
ASSEMBLE BT32 TO CROSS BRACE WITH 5/16" BOLT AND NUT CLIP AND #14 SELF DRILLING SCREW ASSEMBLE FL73 AND FL74 TO CROSS BRACE WITH 5/16" BOLTS AND NUTS



**4** BEND STONE GUARD BY HAND AND KNEE TO FIT THE WHEEL WELL BEFORE INSTALLING TO RUNNING BOARD



INSTALL STONE GUARD TO OTHER END OF BOARD



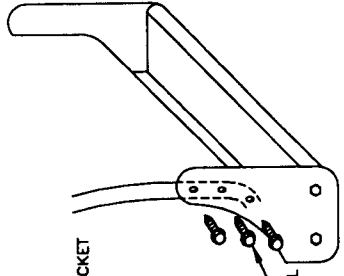
8' 1/2' BED  
SLIDE TWO 1/4"x5/8" SQUARE HEAD SCREW INTO EACH TRACK.

8' BED  
SLIDE THREE 1/4"x5/8" SQUARE HEAD SCREW INTO EACH TRACK.

**5** FASTEN FRONT STONE GUARD TO BOARDS WITH 3/8" SELF TAPPING BOLT. BEND STONE GUARD BY HAND AND KNEE TO FIT THE WHEEL WELL



**8** HOLD BOARD IN PLACE, WITH THE REAR RESTING ON THE BACK BRACKET



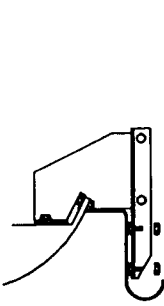
**9** SCREW THROUGH STONE GUARD INTO FENDERWELL LIP USING #14 BY 3/4 SELF DRILLING SCREWS. MAKE SURE YOU DRILL INTO METAL

3 PLACES AT EACH STONE GUARD

NOTE: BE SURE THAT 1/4" BOLTS ARE PLACED INTO THE BRACKET STEP SUPPORT

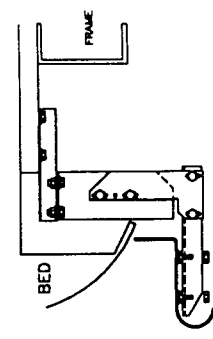
CAB BRACKETS 6 1/2' & 8' BED

**10**



SECURE BOARD TO BRACKET WITH (2) 1/4" NUTS

8' BED...REAR BRACKET



**11**

WITH BOARD LEVEL TIGHTEN ALL LOOSE BOLTS

**12**

REPEAT FOR OTHER SIDE

IN259 08/30/04