



# 04-CURRENT F-150 6 1/2' & 8' BOX BOARDS

IN252  
11/21/03

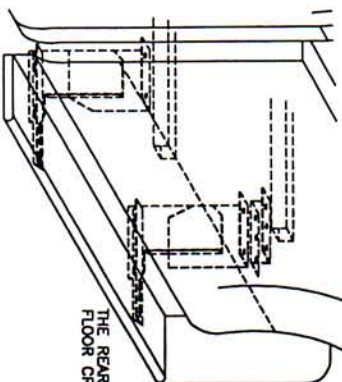
DRILLING INTO BODY AND FRAME IS REQUIRED.

## INSTALLATION

QTY, 6' & 8'	DESCRIPTION	QTY, 6' & 8'	DESCRIPTION
1	RUNNING BOARD 1 DRIVER & 1 PASSENGER	2/4	5/16" CLIP NUT
1	STONE GUARD 1 LEFT & 1 RIGHT	10/24	5/16" x 3/4" BOLT
8	3/8" x 1" SELF-TAPPING SCREW	18/20	5/16"-18 HEX WASHER HEAD NUT
6	#14 x 3/4" SHEET METAL SCREW	2/4	FLAT BRACKET, FL74
4/8	1/4" x 5/8" SQUARE HEAD SCREW	2/4	FLAT BRACKET, FL73 D&P
1	END CAP 1 LEFT & 1 RIGHT	2/4	HORIZONTAL BRACKET, SUPPORT, 3124F
		0/2	BENT TAB BT32

TOOLS REQUIRED: 5/16" DRILL • 1/2" HEX SOCKET • 1/2" WRENCH • 5/16" NUT DRIVER • 3/8" NUT DRIVER

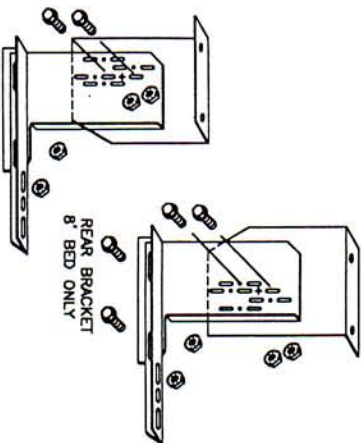
## BOX BRACKET LOCATION (DRIVERS SIDE SHOWN)



THE REAR BRACKET FITS ON THE SECOND FLOOR CROSS BRACE, 8' BEDS ONLY

1. LOCATE THE FIRST BED CROSS BRACE BEHIND THE CAB, FOR 6 1/2' AND 8' BEDS

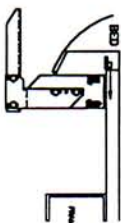
2. BRACKET ASSEMBLY ASSEMBLE WITH 5/16" BOLTS



FRONT BRACKET  
6 1/2' AND 8' BED'S

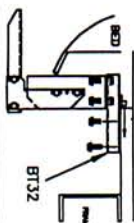
3. 6 1/2' AND 8' BEDS, FRONT BRACKET PREDRILL A 5/16" HOLE NEAR THE END OF CROSS BRACE

ASSEMBLE WITH 5/16" BOLTS AND NUT CLIP AND #14 SELF DRILLING SCREW

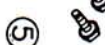


8' BED, REAR BRACKET  
PREDRILL A 5/16" HOLE NEAR THE END OF THE CROSSBRACE, SLIDE NUT CLIP INTO END OF CROSS BRACE

ASSEMBLE BT32 TO CROSS BRACE WITH 5/16" BOLT AND NUT CLIP AND #14 SELF DRILLING SCREW ASSEMBLE FL73 AND FL74 TO CROSS BRACE WITH 5/16" BOLTS AND NUTS



4. BEND STONE GUARD BY HAND AND KNEE TO FIT THE WHEEL WELL BEFORE INSTALLING TO RUNNING BOARD



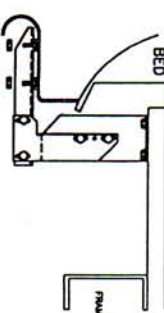
FASTEN REAR STONE GUARD TO BOARD WITH 3/8" SELF TAPPING BOLT. BEND STONE GUARD BY HAND AND KNEE TO FIT THE WHEEL WELL

5. INSTALL END CAP TO BOARD WITH 3/8" SELF-TAPPING BOLT



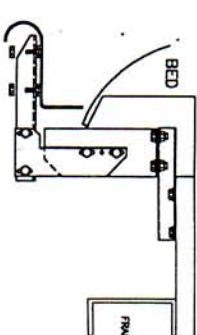
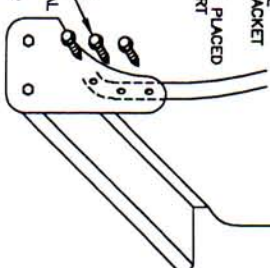
6. SLIDE ONE 1/4" x 5/8" SQUARE HEAD SCREW INTO EACH TRACK, 6 1/2' BED  
SLIDE TWO 1/4" x 5/8" SQUARE HEAD SCREWS INTO EACH TRACK, 8' BED

7. 6 1/2' AND 8' BEDS, FRONT BRACKET SECURE BOARD TO BRACKET WITH (2) 1/4" NUTS AT EACH BRACKET



8. HOLD BOARD IN PLACE, WITH THE FRONT RESTING ON THE BOX BRACKET  
NOTE:  
BE SURE THAT 1/4" BOLTS ARE PLACED INTO THE BRACKET STEP SUPPORT

9. SCREW THROUGH STONE GUARD INTO FENDERWELL LIP USING #14 BY 3/4" SHEET METAL SCREWS. MAKE SURE YOU DRILL INTO METAL 3 PLACES AT EACH STONE GUARD



10. WITH BOARD LEVEL, TIGHTEN ALL LOOSE BOLTS

REPEAT FOR OTHER SIDE