

Installation Guide

Dodge Ram

Product No.

2003 to Current

Dually & 8' Box

8' Box 3109

Dually Box 3110

Note: Drilling into body is required.

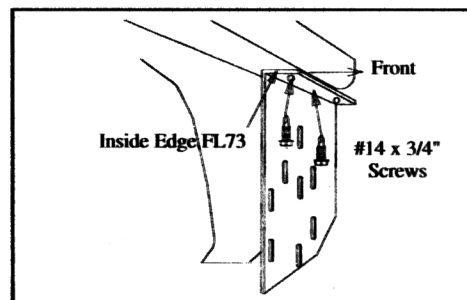
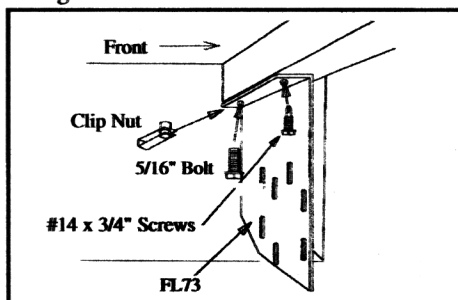
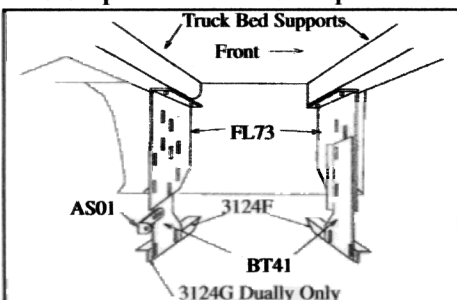
Installation Parts List:

Qty.	Description	Qty.	Description
A 1	GlaStep Box Board (Driver Side)	I 4	Flat Brackets #FL74
B 1	GlaStep Box Board (Passenger)	J 2	Angle Straps #AS01
C 2	Foam Tape Strips	K 20	5/16" X 3/4" Washer Head Bolts
D 2	Step Pads	L 18	5/16" Washer Head Nuts
E 2	Flat Brackets #FL73-D (Driver Side)	M 2	5/16" Nut Clips
F 2	Flat Brackets #FL73-P (Passenger Side)	N 16	#14 x 3/4" Self-Drilling Screws
G 4	Step Supports #3124F	O 4	#12 x 1-1/4" Self-Drilling Screws with Rubber Washers
H 2	Step Supports #3124G		

Tools Required:

5/16" Drill • 1/2" Hex Socket • 1/2" Wrench • 5/16" Nut Driver • 3/8" Nut Driver

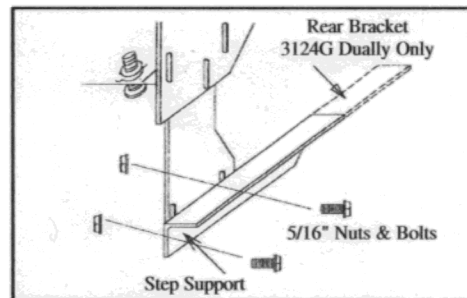
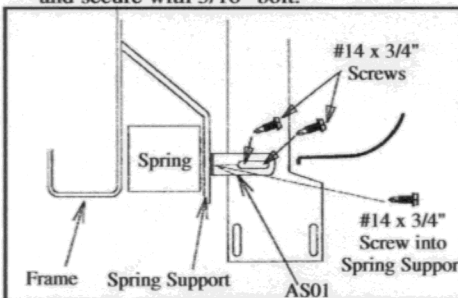
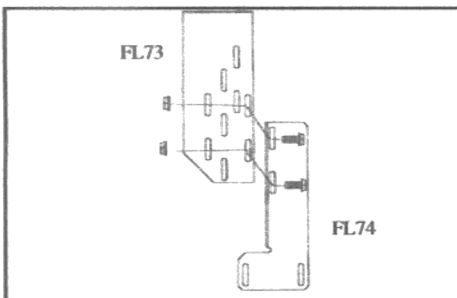
- Prior to painting, fit your GlaSteps to the body.** A good fit is accomplished when mating surfaces fit with minimum light gaps. Note: Vehicle bodies have variations and a perfect fit may not be possible.
- Painting your GlaSteps.** To insure a proper paint finish, use a top quality auto paint system and follow the manufacturers instructions. Your GlaStep should be sanded and primed before painting.



- Brackets FL73-D&P will mount on truck bed supports as shown at right.

- Attach flat plates #FL73 to box supports. Align front of plate with box support. Use one #14 x 3/4" self-drilling screw to attach rear of FL73, drill 5/16" hole through front hole of FL73 in box support. Insert clip nut and secure with 5/16" bolt.

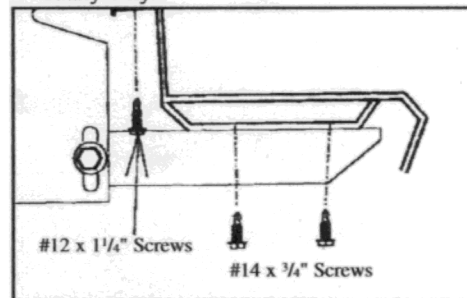
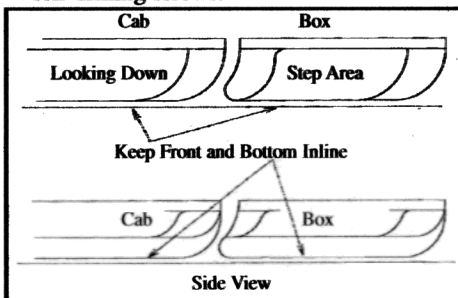
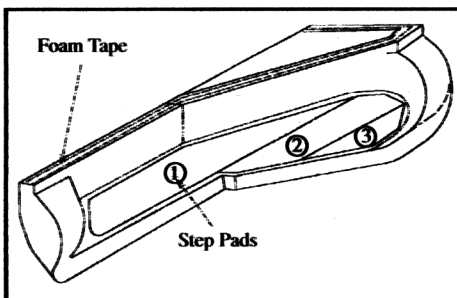
- Attach FL73 to rear bed support using two #14 x 3/4" screws. Align inside edge of FL73 with inside of front FL73.



- Bolt FL74 to FL73 using two 5/16" nuts and bolts in slots shown.

- For rear brackets only, attach AS01 to FL74 and to spring support using three #14 x 3/4" self-drilling screws.

- Attach 3124-Fs to FL74s using 5/16" nuts and bolts. Use 3124G (extra long) on rear for dually only.



- Clean surface prior to attaching tape and step pads with denatured alcohol. Apply foam tape to top lip of board. Position step pad on stepping surface. Peel off tape backing starting with rear strip. Keep pad in position, peel off backing then apply pressure to top of pad to stick tape to board. Continue above steps for all tape strips.

- Make sure cab and box boards line up. Dually shown.

- Position step on bracket. Secure with #12 x 1-1/4" self-drilling screws. Tighten all bolts to 18 foot pounds.

IN177 5/12/03