

Installation Guide

Chevy Tahoe/GMC Yukon

Product No.

2000 to Current

Note: Use all factory holes only.

2122

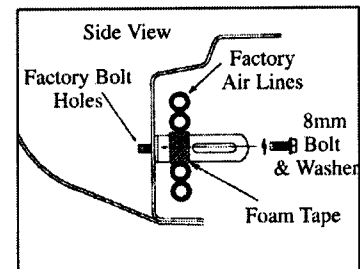
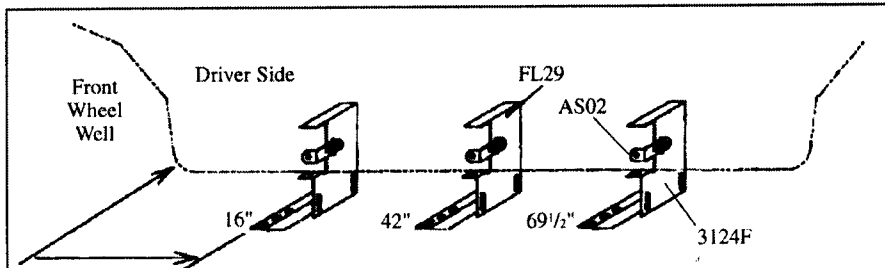
Installation Parts List:

Qty.	Description	Qty.	Description
A 1	GlaStep #2122-D (Driver Side)	G 6	8mm x 25mm Bolts
B 1	GlaStep #2122-P (Passenger Side)	H 6	5/16" Lock Washers
C 2	Step Pads 4" x 58"	I 24	5/16" x 3/4" Washer Head Bolts
D 4	Foam Tape Strips (2) 92", (2) 16"	J 24	5/16" Washer Head Nuts
E 6	#FL29 Flat Plate	K 24	#14 x 3/4" Self-Drilling Screws
F 6	#AS02 Angle Strap	L 8	#12 x 1-1/4" Self-Drilling Screws With Rubber Washers

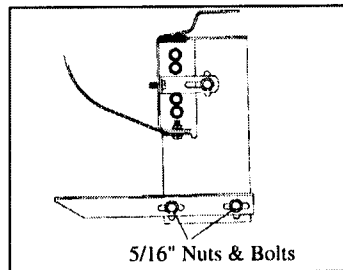
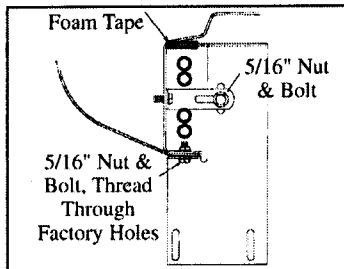
Tools Required:

1/2" Hex Socket • 1/2" Wrench • 5/16" Nut Driver • 3/8" Nut Driver

- Prior to painting, fit your GlaSteps to the body.** A good fit is accomplished when mating surfaces fit with minimum light gaps. Note: Vehicle bodies have variations and a perfect fit may not be possible.
- Painting your GlaSteps.** To insure a proper paint finish, use a top quality auto paint system and follow the manufacturers instructions. Your GlaSteps should be sanded and primed before painting.

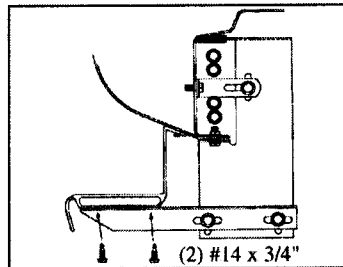
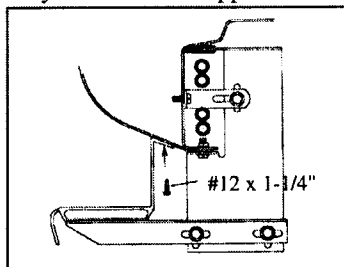


- Measure** from front wheel well, back 16", 42", and 69-1/2". Mark these bracket locations. Note: Steel plates have been inserted under fiberglass to mount brackets securely using self-drilling screws. Note: Factory holes should be close to these measurements -- Use factory holes only.



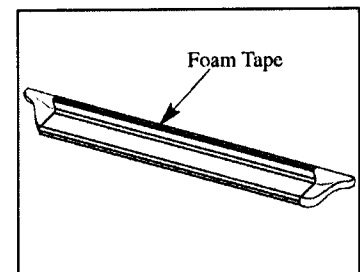
- Place foam tape at top of FL29 flat plate. Bolt to AS02 then to pinch weld with 5/16" nuts and bolts. Note: top of flat plate must hit rocker panel. Tighten FL29 to AS02 and 8mm bolt before tightening to pinch weld. Note: On 2005 models, front and rear brackets attach using the factory stud and nut supplied in bolt kit.

- Attach 3124F step support to flat plate using two 5/16" nuts and bolts. **Do not tighten at this time.**

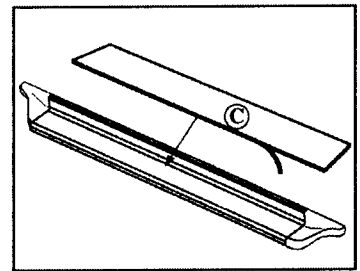


- Position board on brackets adjusting bracket for a good fit. Use #12 x 1-1/4" self-drilling screws with rubber washers to attach lip of board to rocker panel.

- Use #14 x 3/4" self-drilling screws to fasten GlaStep to step supports, then **tighten all bolts to 18 foot pounds**



- Apply foam tape to top edge of GlaStep. Remove protective strip from top edge of foam tape.



- Tighten step support bolt and nut to 18 foot pounds. Place pad on step. Peel off tape backing to secure. **Don't forget the Owens label!**

IN112A 4/12/05