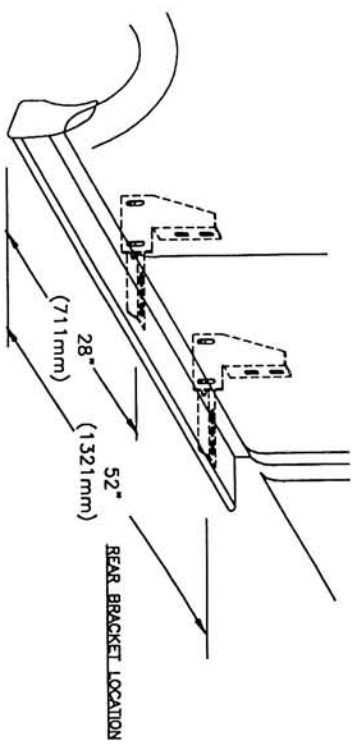
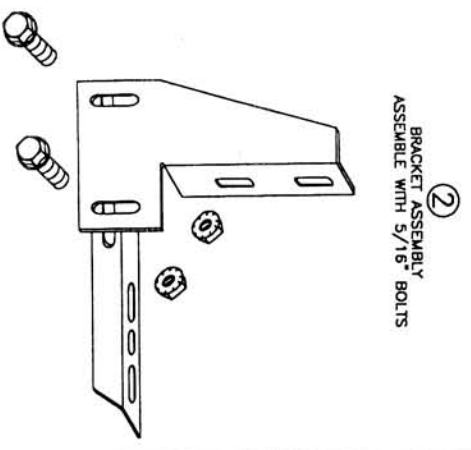


QTY.	DESCRIPTION	QTY.	DESCRIPTION
1	RUNNING BOARD 1 DRIVER & 1 PASSENGER	4	HORIZONTAL BRACKET, SUPPORT, 3124F
1	STONE GUARD 2 LEFT & 2 RIGHT	4	5/16" CLIP NUT
8	3/8"x1 SELF TAPPING SCREW	20	5/16"x 3/4" BOLT
8	#14x3/4" TEK SCREW	18	5/16"-18 HEX NUT
8	1/4x5/8" SQUARE HEAD SCREW	4	FLAT BRACKET, FL11
8	1/4"-20 HEX NUT	1	END CAP 1 LEFT & 1 RIGHT

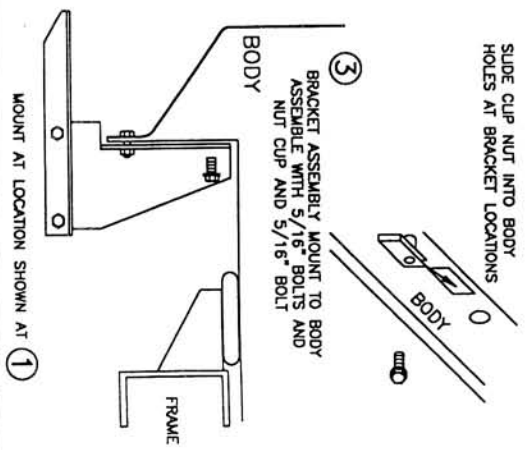
TOOLS REQUIRED: 5/16" DRILL • 1/2" HEX SOCKET • 1/2" WRENCH • 5/16" NUT DRIVER • 3/8" NUT DRIVER



① (DRIVERS SIDE SHOWN)
 MEASURE FROM FRONT WHEEL WELL TO BRACKET LOCATION
 MARK THIS DIMENSION ON THE PINCH WELD

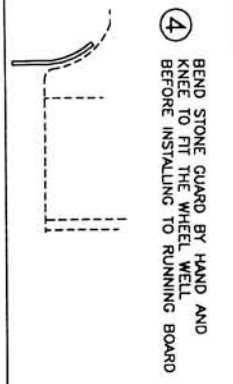


② BRACKET ASSEMBLY
 ASSEMBLE WITH 5/16" BOLTS



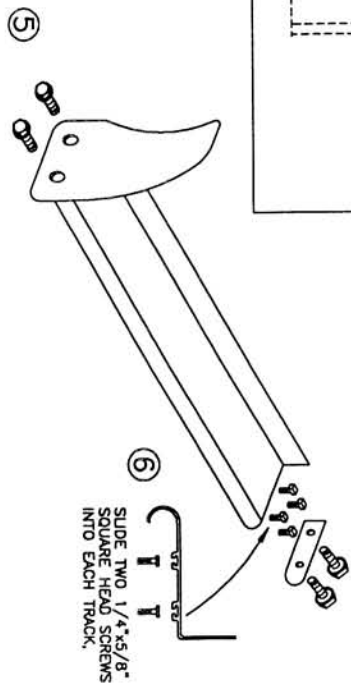
③ SLIDE CUP NUT INTO BODY HOLES AT BRACKET LOCATIONS
 BRACKET ASSEMBLY MOUNT TO BODY ASSEMBLY WITH 5/16" BOLTS AND NUT CUP AND 5/16" BOLT

MOUNT AT LOCATION SHOWN AT ①



④ BEND STONE GUARD BY HAND AND KNEE TO FIT THE WHEEL WELL BEFORE INSTALLING TO RUNNING BOARD

FASTEN FRONT STONE GUARD TO BOARDS WITH 3/8" SELF TAPPING BOLT. BEND STONE GUARD BY HAND AND KNEE TO FIT THE WHEEL WELL

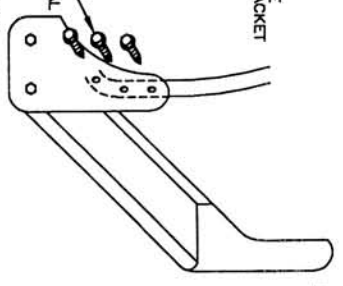


⑦ INSTALL END CAP TO BOARD WITH 3/8" SELF TAPPING BOLT

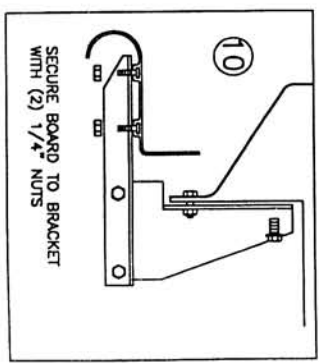
⑥ SLIDE TWO 1/4"x5/8" SQUARE HEAD SCREWS INTO EACH TRACK.

⑧ HOLD BOARD IN PLACE WITH THE REAR RESTING ON THE BACK BRACKET

⑨ SCREW THROUGH STONE GUARD INTO FENDERWELL LIP USING #14 BY 3/4 SELF DRILLING SCREWS. MAKE SURE YOU DRILL INTO METAL



NOTE: BE SURE THAT 1/4" BOLTS ARE PLACED INTO THE BRACKET STEP SUPPORT



⑩ SECURE BOARD TO BRACKET WITH (2) 1/4" NUTS

⑪ WITH BOARD LEVEL TIGHTEN ALL LOOSE BOLTS

⑫ REPEAT FOR OTHER SIDE