



2012- Present

Toyota Prius V  
Driver & Passenger Side  
Extender Guide

**Installation Guide: Thank you for purchasing ExtendMySeat brackets. Please follow the directions carefully and within 30 minutes you will love your new seats.**

*Inventory in Box:*

- 3- ExtendMySeat brackets
- 3- Black 3/8 stainless bolts
- 1- Stainless Nut

What you will need for assembly:

- 1- Socket wrench
- 1- Metric 14 socket
- 1- Box Cutting Knife

Step 1- Remove the Black ExtendMySeat brackets from the packaging and locate the 3 black 3/8" provided bolts and 1 nut.

Step 2- Go to your vehicle with a socket wrench, a Metric 14 socket, eye protection and your keys. Remember to turn off your cabin lights.

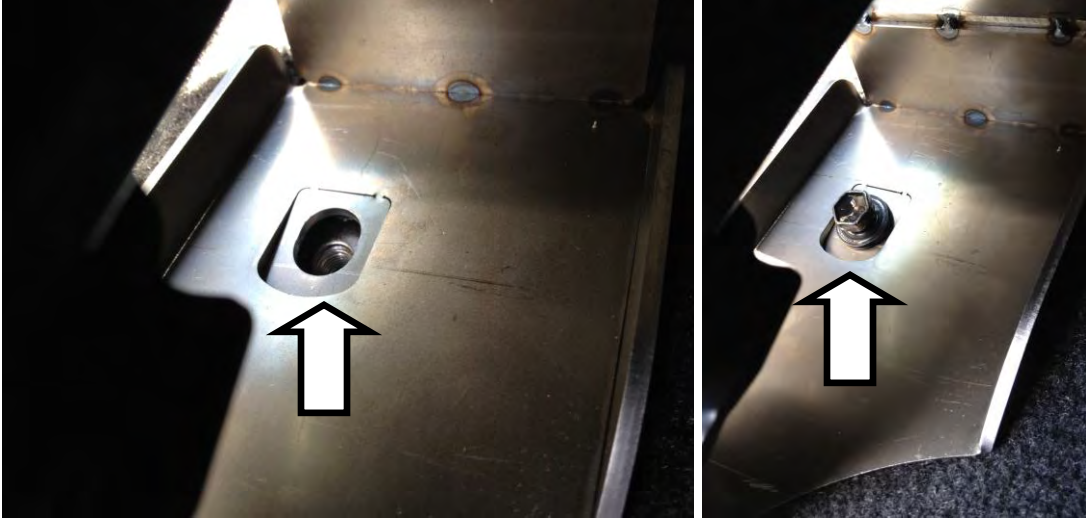
Step 3- Locate the 4 factory bolts that hold your seat to the vehicle. Remove the 4 rear plastic guards (twist clockwise) in order to locate the 4 factory bolts. Take your socket wrench and loosen the 4 factory bolts. (2 in the front and 2 behind your seat, go to rear seat to locate) Remove the 4 factory bolts and set them aside.



Step 4- Grab your brackets and lay them out with the largest bracket going on the door side parallel with the car. (Passenger side layout is flipped so the one long bracket is installed towards the outside of the car.) There are also etched arrows on the top of the brackets to show the correct direction of installation.

The 2 smaller pieces always go towards the inside of the vehicle (nearest the transmission hump) with the smallest flat piece in the rear. The mid-sized bracket goes into the front inside location and the smallest piece will be installed into the rear inner location (by the transmission hump).

Step 5 - Start by finger tightening the inner rear factory hole with the factory bolt (closest to the outside of the car)



Step 6- Go to the front seat and line up the front factory hole locations with both brackets and finger tighten the factory bolts. Do not secure the factory seat to the brackets.



*\*Front of vehicle is to the left of the above photos*



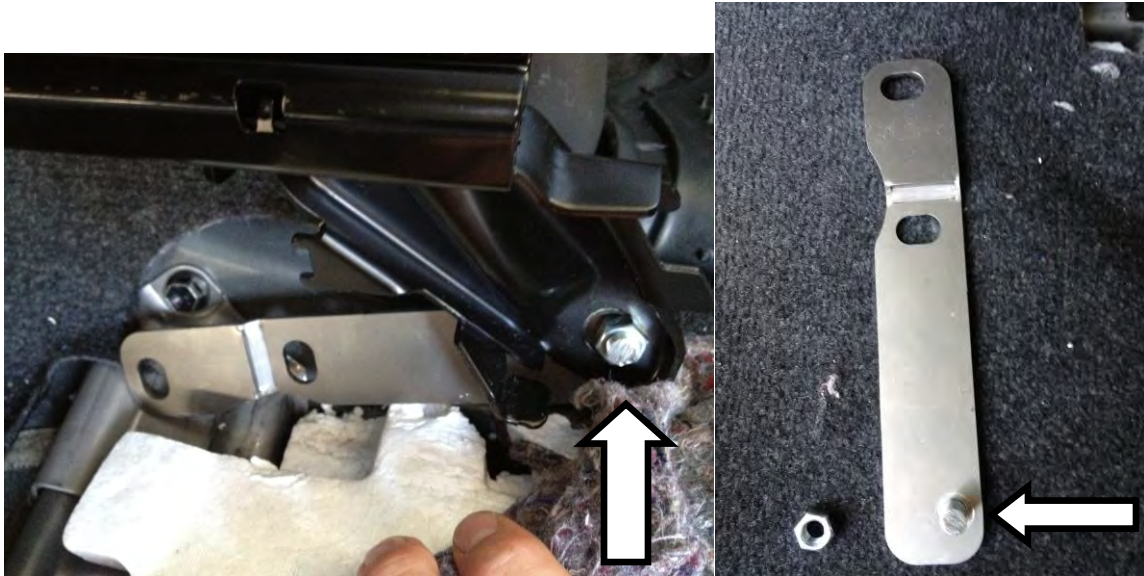
Step 7- The inner rear flat bracket will require a small incision of your floorboard carpet. You will need to cut a 5" straight line from the factory hole location towards the rear of the vehicle.(see below straight cut)



You will also need to cut-out a 1" width of the foam under the carpet in order to make room for the extended seat. This will not hard the vehicle or void any warranty. The carpet will be placed back over the small incision, covering up.



Step 8- Insert the male threaded tab through the factory rear seat foot hole and tighten the provided nut. The male end of the bolt will be facing the outside of the driver's side of the vehicle.



Step 8B- You will see an additional black factory bolt like the below photo. You will need to remove this bolt and screw it back through the front hole location of the small bracket. The final “middle” hole will receive the last remaining factory bolt. Once you have both of the factory bolts tight, check to make sure the seat is level. If the seat is a bit uneven, loosen the factory bolts, level seat and then re-tighten.



The below photo shows the 2 factory bolts secured.

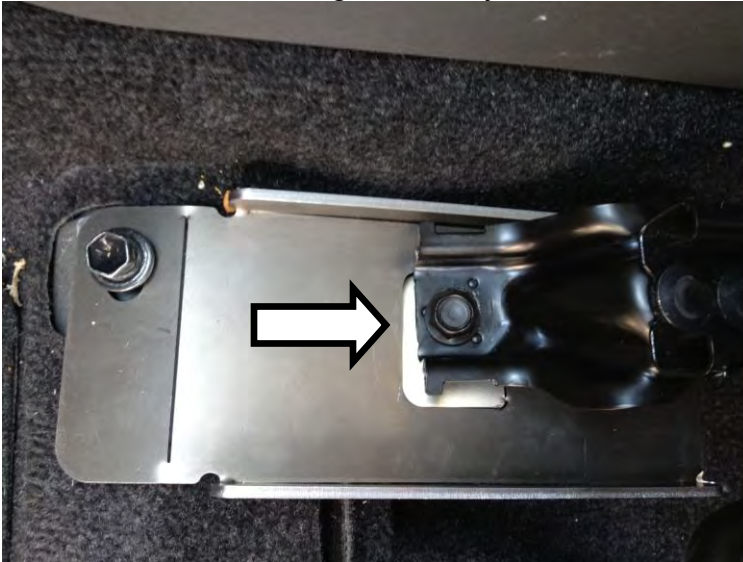




Step 9- This photo is of the rear outer factory hole. Screw the ExtendMySeat Black bolt into the rear hole location.



Step 10- Go to the front seat and slide the seat to the rear. You will now want to screw in the 2 remaining ExtendMySeat bolts and secure the factory seat.



Step 11- ONCE ALL 8 BOLTS ARE FINGER TIGHT; NOW COMPLETE THE INSTALLATION BY SECURING THE 8 BOLTS. CHECK TO MAKE SURE ALL OF THE BOLTS ARE NOW TIGHT AND SECURE.

Step 12- Re-install factory plastic guards.



Step 13- Test the seat by moving the seat forward and backwards.

To view a video on installation, please visit our YouTube.com channel searching for the channel “ExtendMySeat”.

If you are installing the passenger side, repeat the above steps on the passenger side.