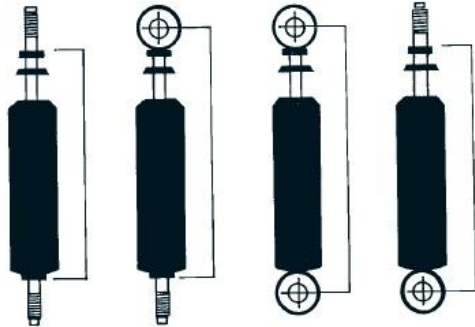
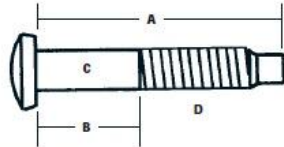


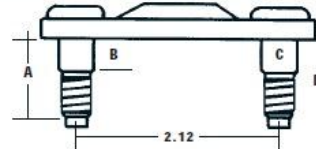
# DRAG SHOCK DIMENSIONS



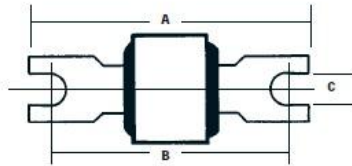
Front Shock Dimensions	Comp. Length	Exten. Length	Top Mount	Bottom Mount
40100 90/10	8.51	13.44	Stem #1	Eye Ring W/BP #3
40120 70/30				Eye Ring
40101 90/10	9.51	14.75	Stem #1	W/BP #1 & SL #1
40121 70/30				
40102 90/10	9.62	14.50	Eye Ring W/BP #1	SP #1
40103 90/10	8.37	13.08	Stem #1	SP #1
40104 90/10	10.00	16.08	Stem #1	SP #1
40106 90/10	7.875	11.625	Stem #1	Eye Ring W/SL #2
Rear Shock Dimensions	Comp. Length	Exten. Length	Top Mount	Bottom Mount
40300 50/50	12.48	20.58	Eye Ring W/BP #2	Eye Ring W/SL #1
40310 70/30	12.62	21.75		Stud #1
40301 50/50	12.05	20.13	Stem #1	Eye Ring W/SL #1, #3, #5
40302 50/50	12.55	21.37	Eye Ring W/BP #2	Stem #1
40303 50/50	10.87	17.87	Stem #3	Stem #2



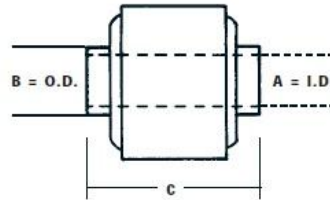
STEM DIMENSIONS				
Code	A	B	C	D
#1	2.37	1.00	3/8"	3/8"-24
#2	2.06	1.00	3/8"	3/8"-24
#3	1.97	1.00	3/8"	3/8"-24



(SP) STUD PLATE DIMENSIONS				
Code	A	B	C	D
#1	1.00	.44	3/8"	5/16"-24



(BP) BAR PIN DIMENSIONS			
Code	A	B	C
#1	3.19	2.38	.33
#2	3.50	2.87	.35
#3	3.00	2.25	.34



(SL) SLEEVE DIMENSIONS			
Code	A	B	C
#1	7/16	5/8	1.25
#2	7/16	5/8	2.16
#3	1/2	5/8	1.38
#4	1/2	3/4	1.62
#5	1/2	5/8	2.00

STUDS DIMENSIONS			
Code	A	B	C
#1	5/8	1.25	3.625

