



## Retro USA Inc. Chrome-Tech™ CH1QS Installation Instructions

### Read All Instructions Carefully Before Starting Installation!

#### Pre-Installation

- 1.) Inspect product for damages that might have been caused by shipping before installing on vehicle. Retro USA Inc. will not accept damaged returns that have been installed on the vehicle.
- 2.) **Important:** Prepare vehicle for installation by cleaning all adhesion surfaces. Vehicle surface must be clean and dry for proper adhesion. Use isopropyl alcohol and a cloth to remove existing wax and dirt residue.

#### Quarter Scoop Preparation

- 1.) Test fit all parts on the vehicle prior painting and installation.
- 2.) Quarter scoops come ready to paint. However, primers or adhesion promoter may be required depending on the paint used. Always follow instructions of the paint manufacturer or the instructions of a professional painter.
- 3.) **Important:** It is necessary that you mask the flat perimeter surface on the inside of the quarter scoop where the tape is applied before painting. This surface must remain bare plastic for the tape to be properly applied.

#### Installation Tips

- To make the red lining tabs easily accessible during installation, fold the tabs back 45° in the direction that they will be pulled. It may be necessary to slightly lift the part during installation so that the linings pull off easily and do not tear.
- Install products in a cool shaded area. Make sure that vehicle surface is cool and clean before installing any products.
- Tape can take up to 72 hrs to fully cure and attain 100% adhesion. For maximum adhesion to vehicle do not pressure wash around products, use excessive force on products, or expose products to extreme heat or cold for up to 72 hrs after installation.
- For the latest version of instructions check our website at [www.retrousa.net](http://www.retrousa.net). Instructions can be found under the Technical Info tab. Version number is located in the upper right corner of the installation instructions.

#### Quarter Scoop Installation

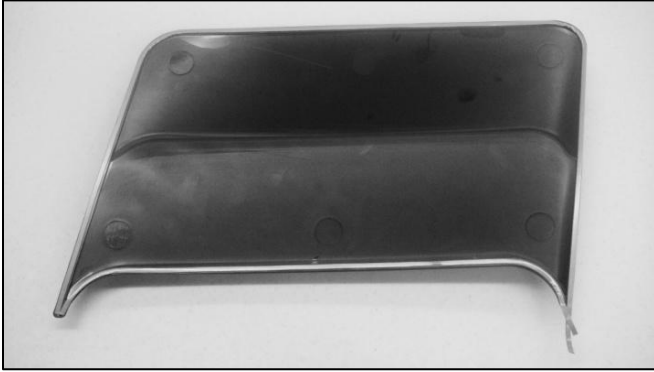
- 1.) Begin installation by applying included 3M 94 primer to the flat perimeter surface on the inside of the quarter scoop as shown below. Follow instructions on the ampoule for applying primer.  
**Caution: Do not apply primer to painted surface of quarter scoop.**



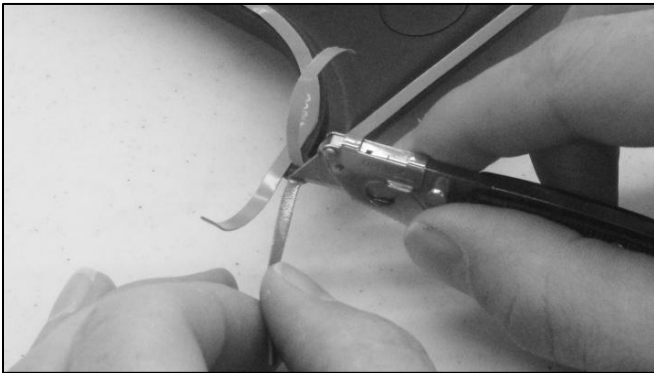
- 2.) Using the included tape, apply a continuous piece of tape to the bottom, rear, and top edges of the flat perimeter surface on the inside of the quarter scoop as shown below. Leave a 1" tab at the top front corner of the scoop as shown below.  
**Caution: Use caution when applying tape to quarter scoops. Tape will not be able to be removed after applying to quarter scoop surface.**



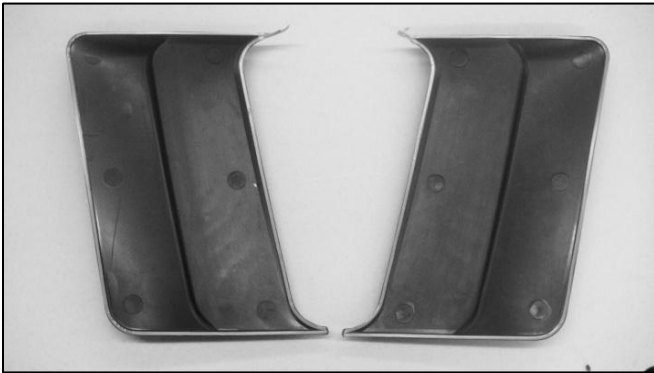
- 3.) Apply a continuous piece of tape to the front edge of the flat perimeter surface on the inside of the quarter scoop as shown below. Leave 1" tab at the top front corner of the scoop as shown below. Entire perimeter of the quarter scoop should now be covered with tape.



- 4.) Use a razor blade to cut the extra tape from the two 1" tabs leaving just the liner. These tabs will aid in removing the liner during installation.



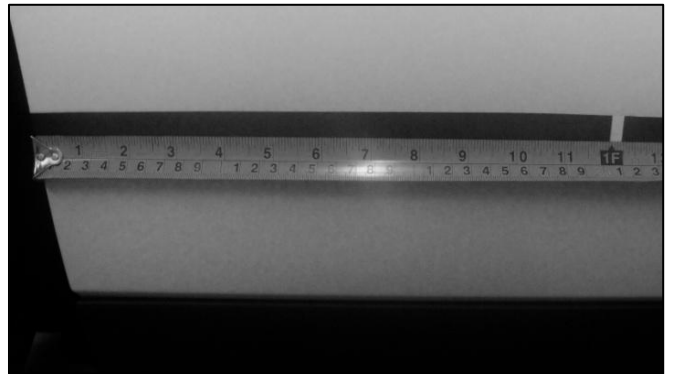
- 5.) Repeat steps 1-5 with the opposite quarter scoop if you have not done so already. Quarter scoops are now ready to be installed on the vehicle.



- 6.) Place a 16" strip of masking tape along the passenger side quarter panel parallel to the rocker panel in front of the wheel well. Top edge of masking tape should be 4.5" above the top edge of the rocker panel. See picture below.



- 7.) Mark a line on the tape 12" in front of the wheel well as shown below.



- 8.) Align quarter scoop on the quarter panel so that the bottom edge of the quarter scoop is parallel with the top edge of tape from step 7. Front edge of quarter scoop should be aligned with line made in step 8. See picture below.

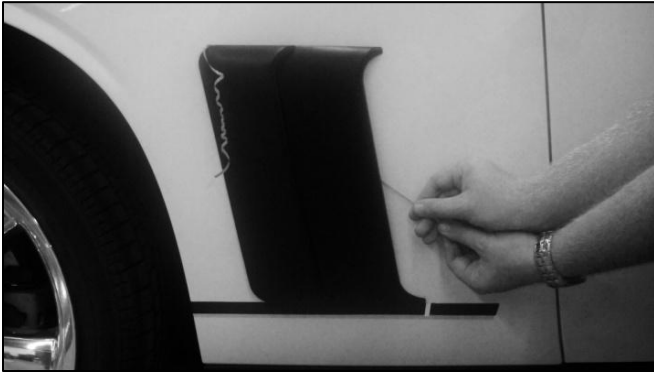


- 9.) Once quarter scoop is properly aligned gently pull the outer lining tab to the rear upper corner of the quarter scoop as shown below. Apply light pressure where the tape has been exposed. Be sure quarter scoop remains aligned as you pull the tape linings.

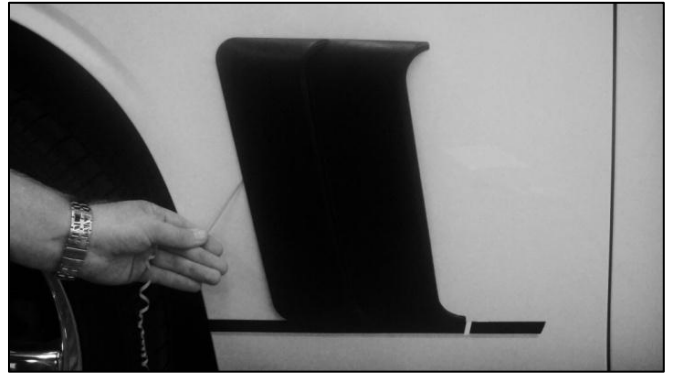
**Caution: Use extreme care when pulling liner so as not to tear the liner. See Installation Tips.**



- 10.) Now gently remove the front edge tape lining by pulling the tab towards the bottom of the vehicle as shown below. Apply light pressure where the tape has been exposed.



- 11.) Last, remove the rest of the outer lining by gently pulling the outer lining tab towards the bottom of the vehicle as shown below. Apply light pressure where the tape has been exposed.



- 12.) Once all of the liners are removed apply firm pressure along the perimeter of the quarter scoop to secure it to the vehicle as shown below.



- 13.) Repeat steps 6-12 using the driver side quarter scoop on the driver side quarter panel.

- 14.) Congratulations! You have installed the Challenger Quarter Scoops.