



## Retro USA Inc. CA1QM-A-U Installation Instructions

### Read All Instructions Carefully Before Starting Installation!

#### Pre-Installation

- 1.) Inspect product for damages that might have been caused by shipping before installing on vehicle. Retro USA Inc. will not accept damaged returns that have been installed on the vehicle.
- 2.) **Important:** Prepare vehicle for installation by cleaning all adhesion surfaces. Vehicle surface must be clean and dry for proper adhesion. Use isopropyl alcohol and a cloth to remove existing wax and dirt residue.

#### Quarter Molding Preparation

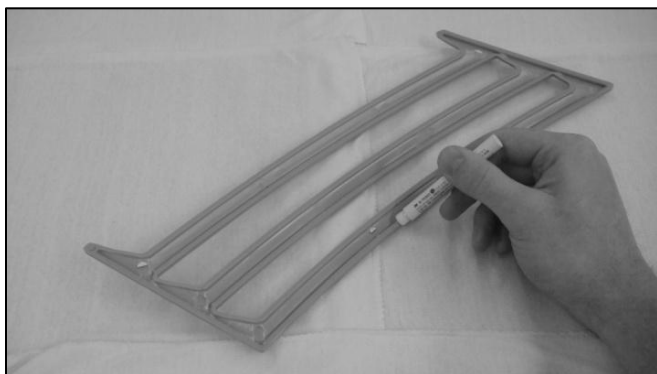
- 1.) Test fit all parts on the vehicle prior to painting or installation.
- 2.) Quarter moldings come ready to paint. However, primers or adhesion promoter may be required depending on the paint used. Always follow instructions of the paint manufacturer or the instructions of a professional painter.
- 3.) **Important:** It is necessary that you mask the flat perimeter surface on the inside of the quarter molding where the tape is applied before painting. This surface must remain bare plastic for the tape to be properly applied.

#### Installation Tip

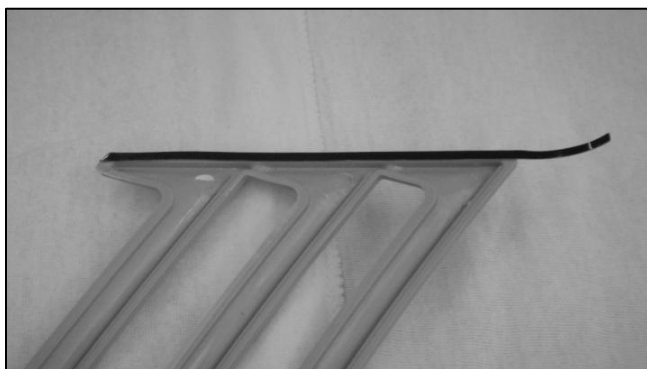
- To make the orange lining tabs easily accessible during installation, fold the tabs back 45° in the direction that they will be pulled. It may be necessary to slightly lift the part during installation so that the linings pull off easily and do not tear.
- Install products in a cool shaded area. Make sure that vehicle surface is cool and clean before installing any products.
- Tape can take up to 72 hrs to fully cure and attain 100% adhesion. For maximum adhesion to vehicle do not pressure wash around products, use excessive force on products, or expose products to extreme heat or cold for up to 72 hrs after installation.
- For the latest version of instructions check our website at [www.retrousa.net](http://www.retrousa.net). Instructions can be found under the Technical Info tab. Version number is located in the upper right corner of the installation instructions.

#### Quarter Molding Installation

- 1.) Begin installation by applying included 3M 94 primer to the flat perimeter surfaces on the inside of the quarter scoop as shown below. Follow instructions on the ampoule for applying primer.



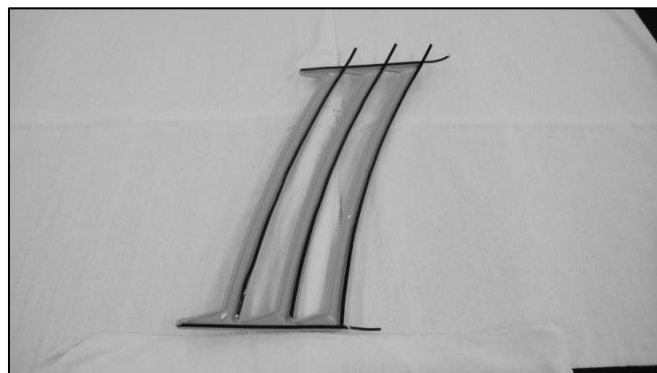
- 2.) Using the included tape, apply a piece of tape to the top edge surface on the inside of the quarter molding as shown below. Leave a 1" tab at the rear of the quarter molding.  
**Caution: Use caution when applying tape to the quarter moldings. Tape will not be able to be removed after applying to quarter molding surface.**



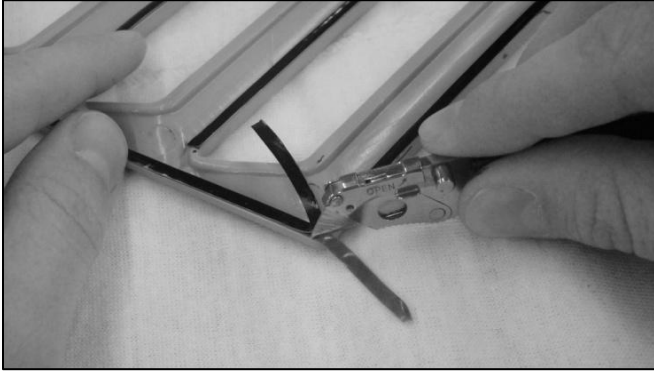
- 3.) Apply a piece of tape to the bottom edge surface on the inside of the quarter molding as shown below. Leave a 1" tab at the rear of the quarter molding.



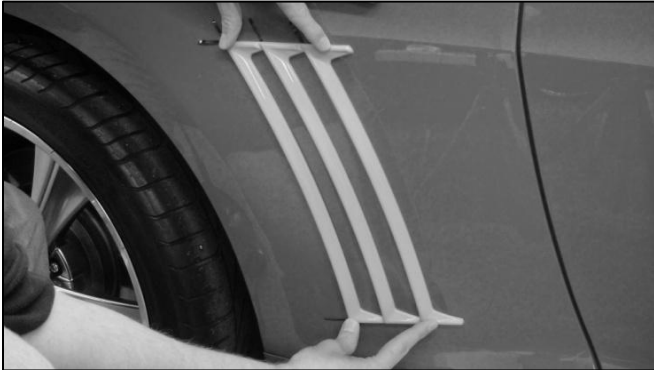
- 4.) Apply a piece of tape to the rear edge surface on each of the three gills as shown below. Leave a 1" tab at the top of the quarter molding.



- 5.) Use a razor blade to cut the extra tape from the five 1" tabs leaving just the liner. These tabs will aid in removing the liner during installation.

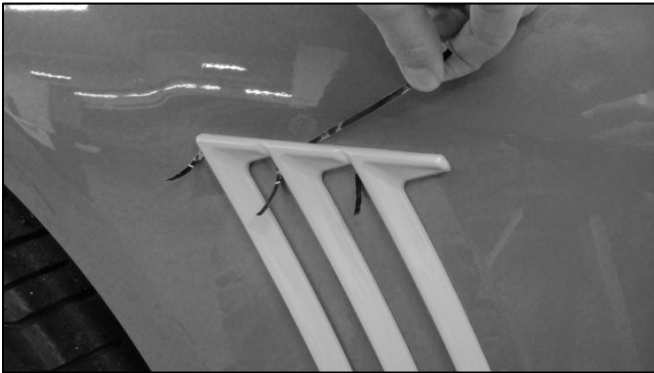


- 6.) Repeat steps 1-5 with the opposite quarter molding if you have not done so already. Quarter moldings are now ready to be installed on the vehicle.
- 7.) Align quarter molding on the vehicle over the existing louvers impressions on the quarter panel as shown below. Quarter molding should be flush with vehicle quarter panel. Be sure all 5 tabs are exposed.

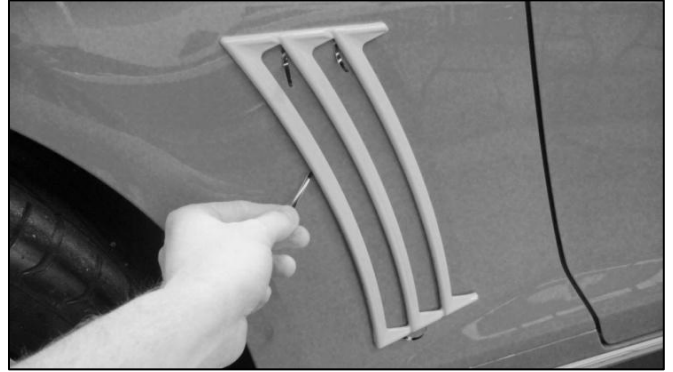


- 8.) Once quarter molding is properly aligned, remove the top lining by pulling the top tab toward the front of the vehicle as shown below. Be sure that Quarter Molding remains properly aligned as you pull the tab. Apply firm pressure where lining has been removed.

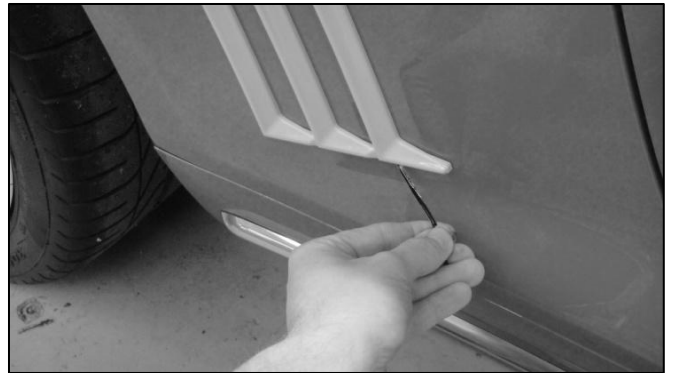
**Caution: Use extreme care when pulling liner so as not to tear the liner. See Installation Tips.**



- 9.) Remove the three middle linings by pulling the three middle tabs toward the bottom of the vehicle starting with the rear most tab as shown below. Be sure quarter molding remains properly aligned when pulling tabs. Apply firm pressure where lining has been removed.



- 10.) Remove the bottom lining by pulling the bottom tab toward the front of the vehicle as shown below. Apply firm pressure where the lining has been removed.



- 11.) Repeat steps 7-10 on the driver side of the vehicle.

- 12.) Congratulations! You have installed the Camaro Quarter Moldings.