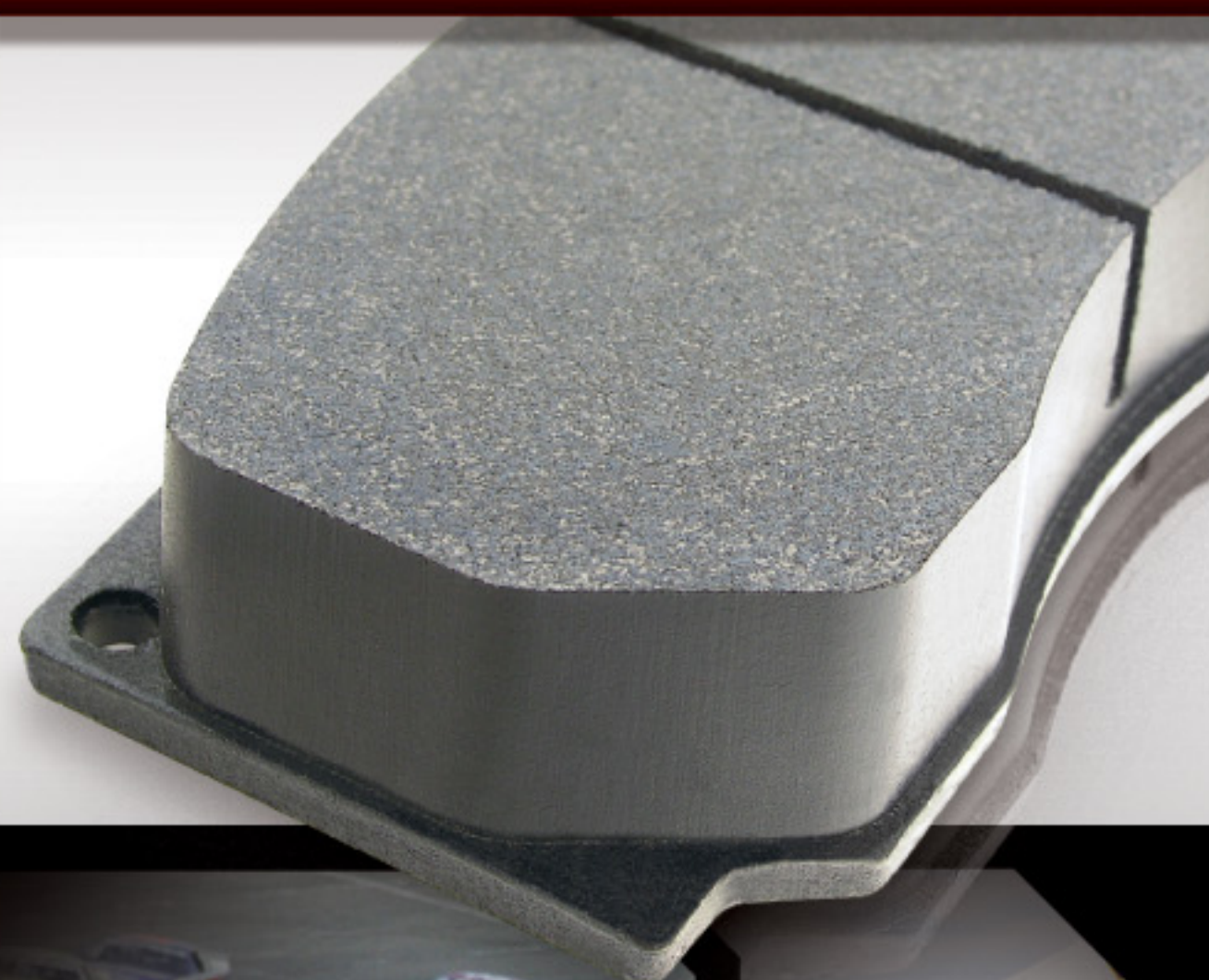




## CIRCLE TRACK REFERENCE GUIDE



WWW.HAWKPERFORMANCE.COM



1.800.542.0972

WWW.HAWKPERFORMANCE.COM



### HAWK PERFORMANCE DYNAMIC TORQUE CONTROL BRAKES



### HAWK PERFORMANCE FERRO-CARBON BRAKES

COMPOUND	REMARKS	COMPOUND	REMARKS
<b>DTC-70</b> Letter Code U	<ul style="list-style-type: none"> <li>Optimal Temperature Range 400-1600°F; 204-871°C</li> <li>High Temp</li> <li>High Torque</li> <li>Excellent Torque Control</li> <li>Excellent Modulation and Release Characteristics</li> </ul> <b>Designed for High Deceleration Rates</b> <i>Supercedes HT-15 material</i>	<b>HT-10</b> Letter Code S	<ul style="list-style-type: none"> <li>Optimal Temperature Range 300-1300°F; 149-871°C</li> <li>High Temp</li> <li>Intermediate to High Torque</li> </ul> <b>Designed for High Deceleration Rates</b>
<b>DTC-60</b> Letter Code G <i>Note: Slightly lower torque than DTC-70</i> <i>Recommended for use with DTC-70 when split friction between front and rear axle is desired</i>	<ul style="list-style-type: none"> <li>Optimal Temperature Range 400-1600°F; 204-871°C</li> <li>High Temp</li> <li>High Torque</li> <li>Excellent Torque Control</li> <li>Excellent Modulation and Release Characteristics</li> </ul>	<b>Blue 9012</b> Letter Code E <i>Note: See DTC-60 for latest material development</i>	<ul style="list-style-type: none"> <li>Optimal Temperature Range 250-1000°F; 121-538°C</li> <li>Low to Mid Temp</li> <li>Low to Intermediate Torque</li> <li>Excellent Modulation</li> </ul> <b>Multi-Purpose Compound</b>
<b>DTC-30</b> Letter Code W	<ul style="list-style-type: none"> <li>Optimal Temperature Range 100-1200°F; 38-649°C</li> <li>Wide Temp Range</li> <li>Controllable Torque</li> <li>Smooth Feel and Bite</li> <li>Excellent Release Characteristics</li> </ul>	<b>MT-4</b> Letter Code L <i>Note: See DTC-60 for latest material development</i>	<ul style="list-style-type: none"> <li>Optimal Temperature Range 400-1200°F; 204-649°C</li> <li>Mid to High Temp</li> <li>Intermediate to High Torque</li> </ul>
<b>DTC-05</b> Letter Code H	<ul style="list-style-type: none"> <li>Optimal Temperature Range 100-900°F; 38-482°C</li> <li>Low to Mid Temp Range</li> <li>Smooth, Predictable Torque</li> </ul> <b>Designed to Provide Lower Torque</b>	<b>Black</b> Letter Code M	<ul style="list-style-type: none"> <li>Optimal Temperature Range 100-900°F; 38-482°C</li> <li>Lower Temp</li> <li>Low to Intermediate Torque</li> </ul>
		<b>DR-97</b> Letter Code J	<ul style="list-style-type: none"> <li>Optimal Temperature Range 100-900°F; 38-482°C</li> <li>Excellent Static and Dynamic Coefficient of Friction</li> </ul>

**PLEASE NOTE:** HT-15 has become obsolete and therefore discontinued.

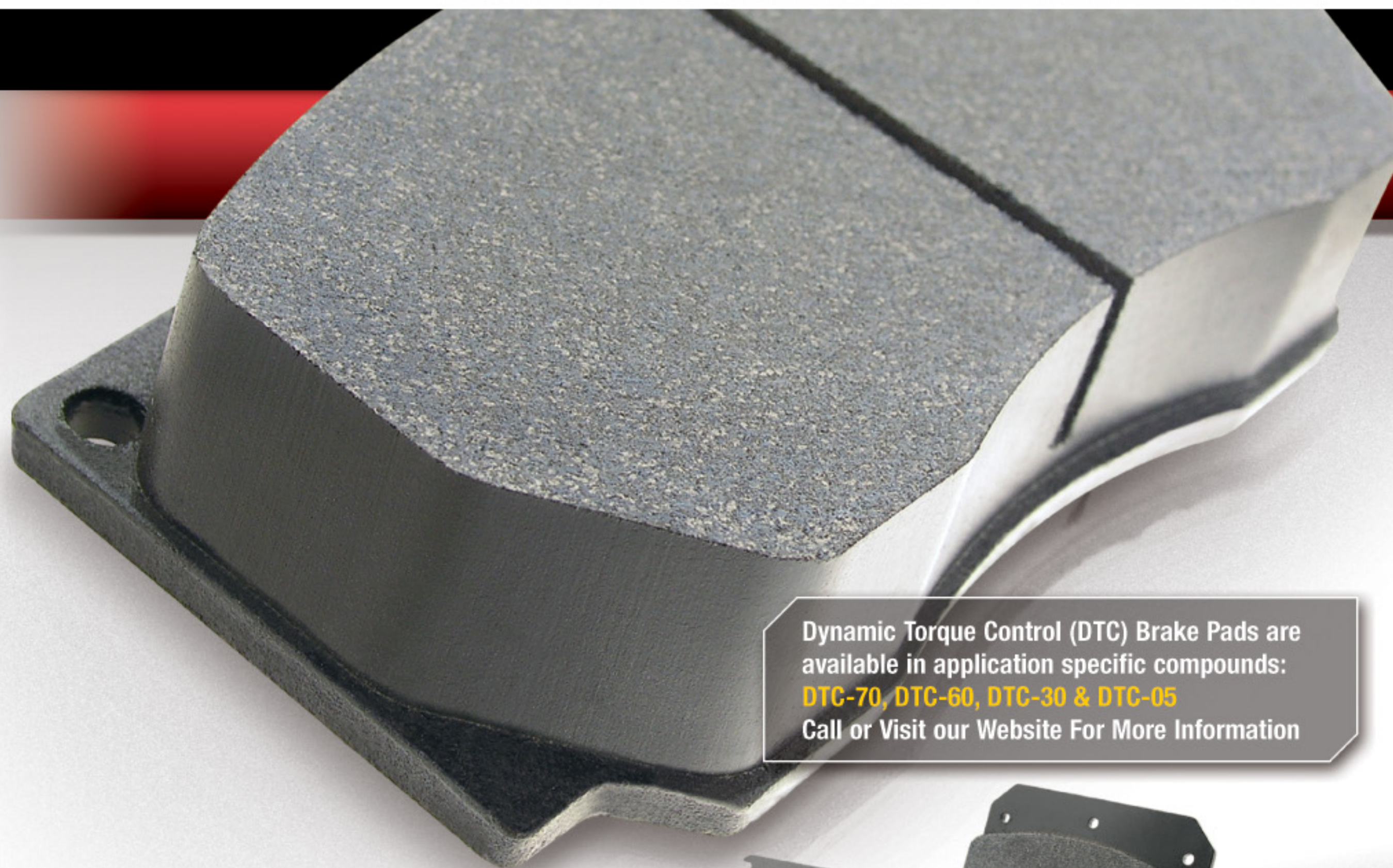


# DOMINATE THE COMPETITION

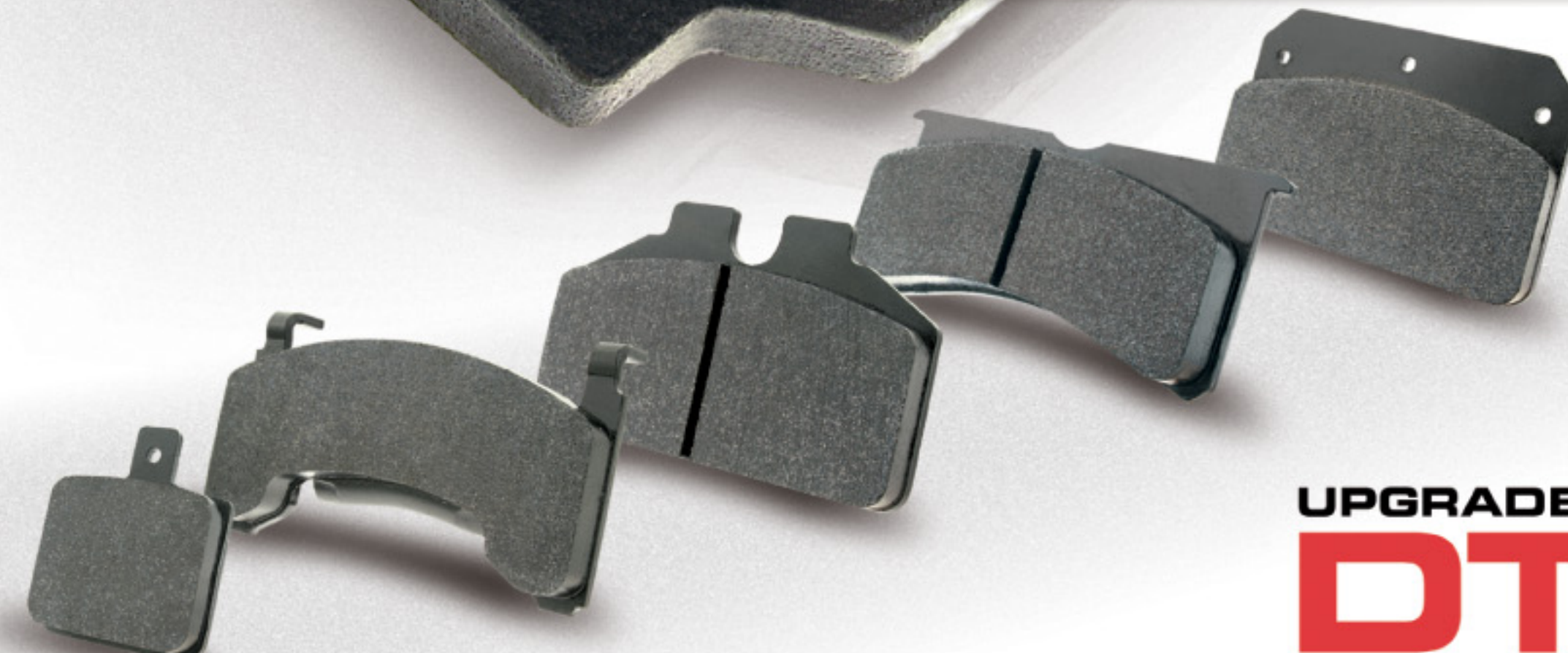
## DYNAMIC TORQUE CONTROL BRAKE PADS (DTC)

Hawk Performance has dominated Motorsports braking for over 15 years, offering highly engineered friction products for nearly every type of racing.

The key to our success has been, and continues to be, our passion to develop leading-edge product technologies and maintain our position as the global market leader. Our premier DTC product line is a direct result of our passion and commitment to Motorsports. When it comes to superior braking performance, our DTC product line has no equal.



Dynamic Torque Control (DTC) Brake Pads are available in application specific compounds: **DTC-70, DTC-60, DTC-30 & DTC-05**  
Call or Visit our Website For More Information



**UPGRADE NOW!**  
**DTC**  
DYNAMIC TORQUE CONTROL



"Hawks DTC-30 brake pads are the most consistent performing pad I've ever used."

- Shannon Babb  
Billy Moyer Motorsports



"I have tried & tested endless types of brake pads and until now have never found a pad that gives me such consistent brake control. I want this new technology on all my cars!"

- Bill Frye  
Bill Frye Racing



"Hawk Performance DTC brake pads give me consistent and superior stopping power from start to finish."

- Clay Rogers  
2006 USAR Hooters Cup Champion

## CIRCLE TRACK REFERENCE GUIDE

### DIRT CIRCLE TRACK

Category	HAWK Standard Compounds	HAWK Upgrade Compounds	PFC Compounds	Wilwood Compounds
	Black	DTC-30	PFC-97	Poly-B
	Black	DTC-30	PFC-93	
Late Model	MT-4	DTC-70	PFC-01	Poly-A
	HPS	DTC-05	PFC-83	Poly-D
	HPS	DTC-05		Poly-E
Modified	Black	DTC-30		Poly-B
	HPS	DTC-05	PFC-80	Poly-D/Poly-E
Wing Sprint Car				
Steel Rotor	Black	DTC-30		Poly-B
Aluminum Rotor	DR-97	DTC-30		Poly-Q
Titanium Rotor		DTC-30		*Red Devil Metallic Pad

### PAVEMENT CIRCLE TRACK

Category	HAWK Standard Compounds	HAWK Upgrade Compounds	PFC Compounds	Wilwood Compounds
	HT-15	DTC-70	PFC-01	Poly-A
Late Model	HT-10	DTC-60	PFC-97	Poly-B
	MT-4	DTC-30	PFC-93	
Whelen Style Modified	HT-15	DTC-70	PFC-01	Poly-A
	MT-4	DTC-30	PFC-97	Poly-B
IMCA Style Modified	MT-4	DTC-30	PFC-01	Poly-A
	Black	DTC-30	PFC-97	Poly-B
Street Stock	MT-4	DTC-70	PFC-01	Poly-A
	Black	DTC-30	PFC-97	Poly-B



1.800.542.0972  
WWW.HAWKPERFORMANCE.COM