

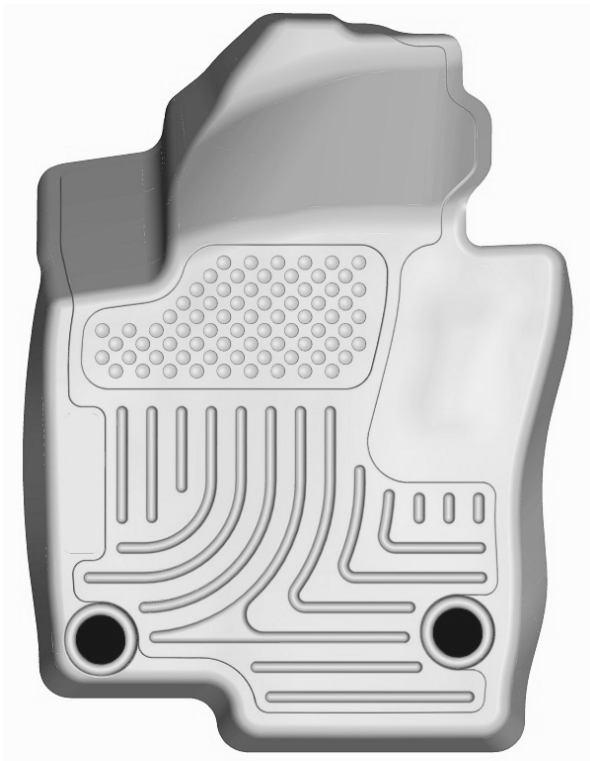
HUSKY LINERS® weatherBEATER

CARE AND USE INSTRUCTIONS

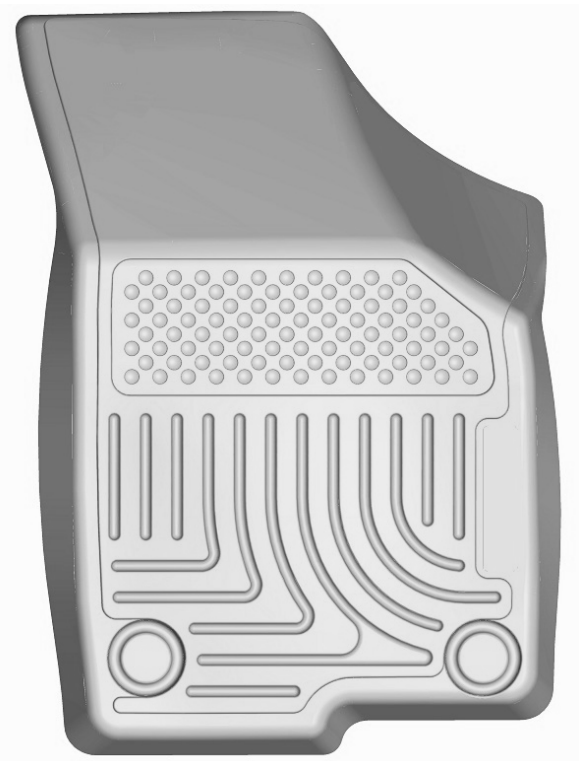
Thank you for selecting a WeatherBeater® Floor Liner from Winfield Consumer Products. Your new front floor liners are custom molded to fit your Volkswagen Jetta. The liners are made to take the place of your factory floor mats. **For correct fit, it is necessary to remove the factory floor mats before installing your new floor liners.** However, do not remove the factory-installed carpeting.

Your liners are made from an engineering resin that is lightweight and extremely tough and durable. The easiest way to clean your liners is with a damp cloth or sponge. If using a cleaner, 409® or Glass Plus® work well. Use of Armor All®, Son-of-a-Gun® or similar items is discouraged as these products make the liners slick.

INSTALLATION INSTRUCTIONS FOR YOUR VOLKSWAGEN JETTA FRONT WeatherBeater® FLOOR LINERS



LEFT OR DRIVER'S SIDE



RIGHT OR PASSENGER'S SIDE

TO EASE INSTALLATION OF YOUR JETTA FRONT LINERS, MOVE THE FRONT ROW SEATS TO THEIR MOST REARWARD POSITION. WITH THIS DONE, YOU CAN EASILY INSTALL THE LINERS. NOTE THAT DRIVER'S SIDE LINER HAS FACTORY STYLE MAT RETAINERS INSTALLED TO LOCATE AND SECURE THE LINER IN PLACE ON THE FACTORY MAT RETAINING POSTS. BEFORE OPERATING YOUR VEHICLE, MAKE SURE THE LINER IS SECURELY POSITIONED ON THE FACTORY MAT RETAINING POSTS. ONCE LINERS ARE IN PLACE, REPOSITION THE FRONT SEATS AS DESIRED.

HUSKY LINERS® weatherBEATER

CARE AND USE INSTRUCTIONS

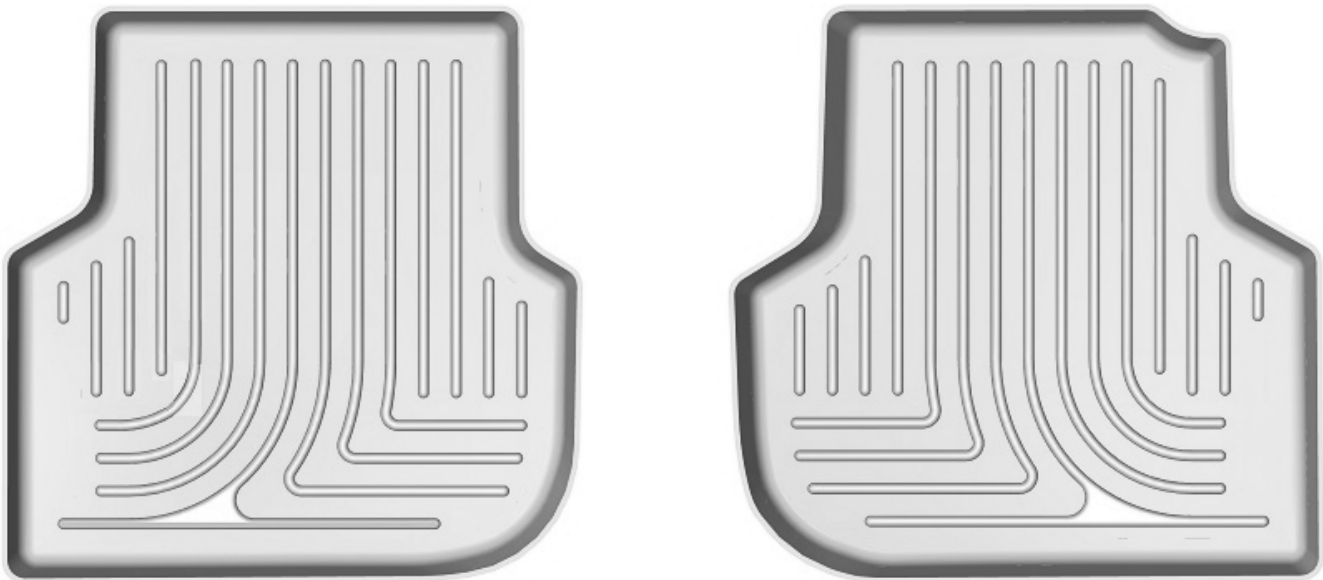
Thank you for selecting a WeatherBeater® Floor Liner from Winfield Consumer Products. Your new rear floor liner is custom molded to fit your Volkswagen Jetta. The liner is made to take the place of your factory floor mats.

For correct fit, it is necessary to remove the factory floor mats before installing your new floor liners. However, do not remove the factory-installed carpeting.

Your liner is made from an engineering resin that is lightweight and extremely tough and durable. The easiest way to clean your liner is with a damp cloth or sponge. If using a cleaner, 409® or Glass Plus® work well. Use of Armor All®, Son-of-a-Gun® or similar items is discouraged as these products make the liner slick.

INSTALLATION INSTRUCTIONS FOR YOUR VOLKSWAGEN JETTA REAR SEAT WeatherBeater® FLOOR LINERS

FRONT OF VEHICLE



TO EASE THE INSTALLATION OF YOUR JETTA SECOND SEAT FLOOR LINERS, MOVE BOTH OF THE FRONT ROW SEATS TO THEIR MOST FORWARD POSITIONS. WITH THIS DONE, INSERT THE LINERS IN YOUR VEHICLE POSITIONED AS SHOWN ABOVE. LASTLY, REPOSITION THE FRONT ROW SEATS AS DESIRED.