

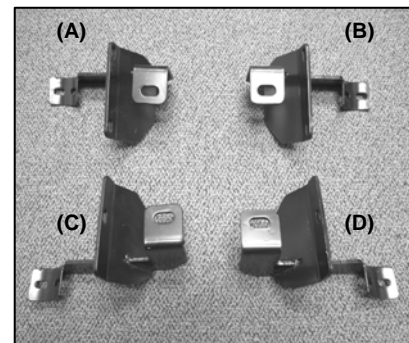


Installation Instructions

PART#:9427\8627\8827
SIDE BARS - 3" ROUND AND OVAL
2007-2010 JEEP WRANGLER 2 DOOR

PARTS LIST

1 Driver Side Bar	4 10mm Lock Washers
1 Passenger Side Bar	4 10mm Fender Washers
1 Passenger Side Front Mounting Bracket (B)	8 8mm X 25 Hex Bolts
1 Passenger Side Rear Mounting Bracket (D)	8 8mm Lock Washers
1 Driver Side Front Mounting Bracket (A)	8 8mm Flat Washers
1 Driver Side Rear Mounting Bracket (C)	6 6MM X 25MM Allen Bolts
1 4mm Allen Tool	6 6MM Nylock Nuts
4 10mm X 35mm Hex Head Bolts	12 6MM Fender Washers
4 10mm Nut Plates	



PROCEDURE:

- 1. REMOVE CONTENTS FROM BOX. VERIFY ALL PARTS ARE PRESENT. READ INSTRUCTIONS CAREFULLY.**
- Insert a nut plate into the frame opening on the front driver side with the nut facing up (Figure 1).
- Locate two factory holes on the front driver side pinch weld. Attach the Front Driver Side Mounting Bracket to the pinch weld using the included (2) 6-1.00mm x 25mm Allen Bolt, (2) 6mm Nylock Nut, and (4) 6mm Fender Washers (Figure 2). Do not tighten at this time.
- Attach the Front Driver Side Mounting Bracket to the side panel using the included (1) 10-1.50mm x 35mm Hex Head Bolt, (1) 10mm Lock Washer, and (1) Fender Washer (Figure 2). Do not tighten at this time.
- Repeat steps 2 & 4 for rear driver side, front and rear passenger side Mounting Brackets.
NOTE: You will only use (1) 6-1.00mm x 25mm Allen Bolt to attach both rear brackets to pinch weld (Figure 3).
- Position Driver Side Bar onto brackets. Attach Side Bar to Mounting Brackets using the included (4) 8-1.25mm x 25mm Hex Head Bolt, (4) 8mm Lock Washers, and (4) 8mm Fender Washers (Figure 4). Do not tighten at this time.
- Level and adjust Side Bar and Brackets, then tighten all hardware at this time.
- Repeat steps 6 & 7 for Driver Side Bar.
- Do periodic inspections to the installation to make sure that all hardware is secure and tight.

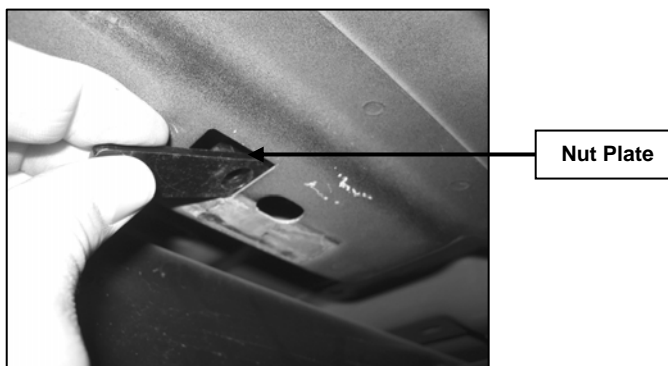


Figure 1

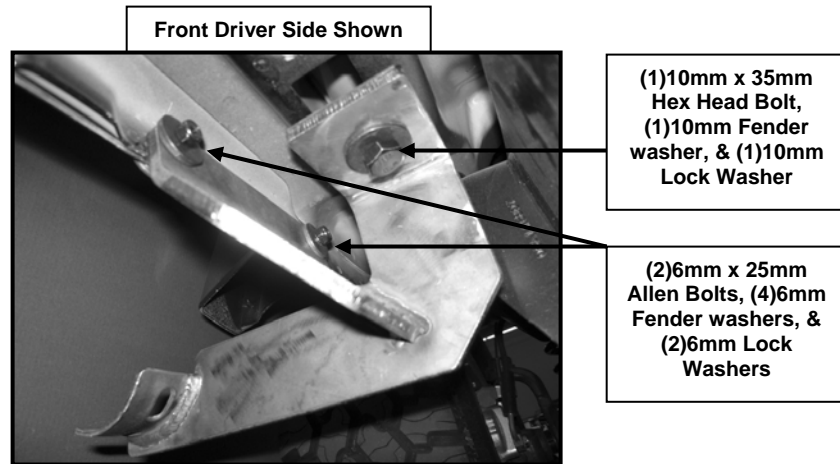


Figure 2

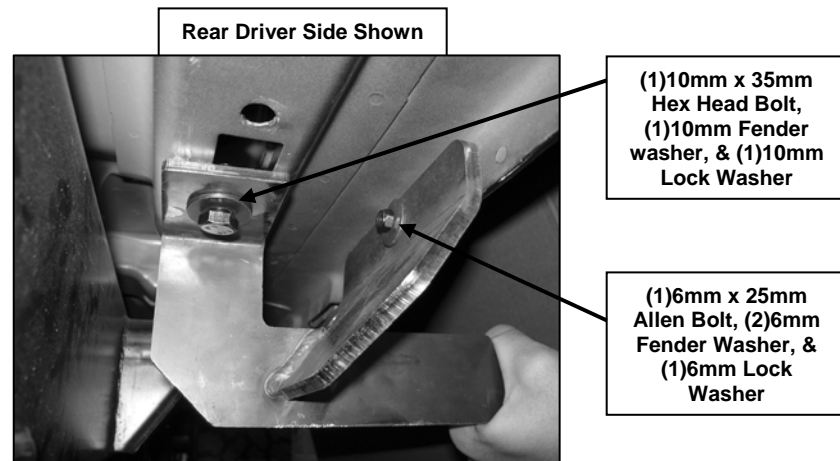


Figure 3

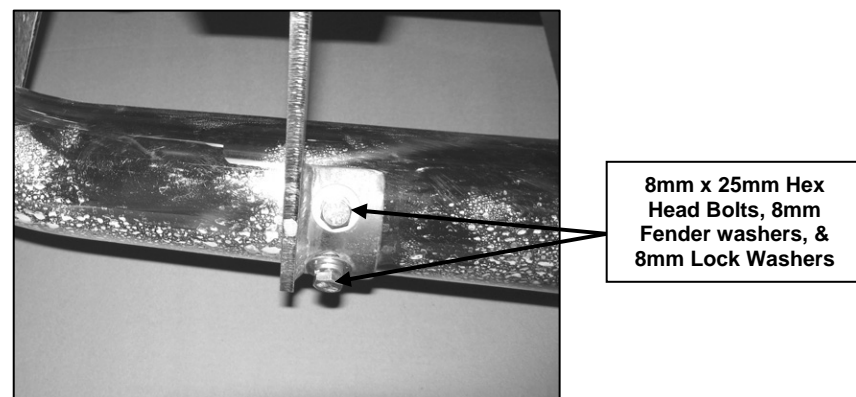


Figure 4