



Installation Instructions

Recovery Bumper W/ Tire Carrier

87 - 06 Jeep Wrangler

NOTE: Please read this information before installing. **SOME DRILLING MAY BE REQUIRED** for the installation of these guards. For correct installation, we recommend you follow these step by step installations carefully. Please take care when installing this product to protect the finish and your investment.

Included Components

Tire Carrier Component

<u>QTY</u>	<u>Description</u>
1	Tire Carrier
1	Latch (installed)
1	1-1/4 x 8-1/2 Bolt
2	1-1/4 hex nuts
1	Wheel mount plate
1	3/4 x 6-5/16 bolt
1	3/4 lock nut
3	3/4 flat washers

Bumper Components

<u>QTY</u>	<u>Description</u>
1	Rear bumper
10	M12X30 mm Hex Head Bolts
18	M12 Flat Washers
8	M12 Nuts
10	M12 Lock Washers

IMPORTANT INFORMATION

This product will accommodate up to a 35" Tire.
Factory bumper and tire carrier mount will need to be removed.
The 3rd brake light will need to be relocated. Location may vary due to tire size.
Rampage now offers a universal rear brake light adapter part #86615. We recommend its use to maintain compliance with traffic laws.

BUMPER INSTALLATION INSTRUCTIONS

NOTE: Measure the distance on the mounting bracket and match these measurements on the frame or you may mount the outer four holes to the frame and use the holes on the bracket as a template to mark the drilling locations (Figure 1). Remove Bumper and set aside. Drill the frame holes to 7/16". **CAUTION:** Use extreme care in assuring the locations you drill are correct. Before drilling be sure to check the backside of the frame for possible hazards or obstructions.

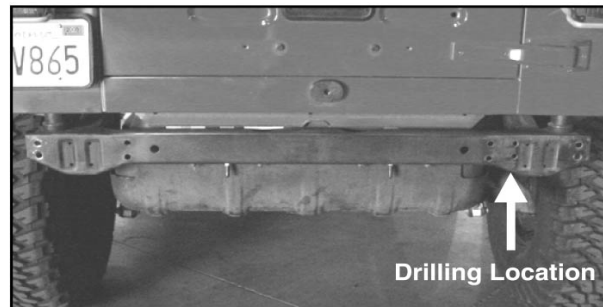


Figure 1

1. Position the new bumper against the back of the vehicle frame. Locate (8) M12 x 30mm Hex Head Bolts, (16) M12 Flat Washers, (8) M12 Lock Washers, and (8) M12 Nuts. Secure Bumper to frame by using the hardware listed in this step (Figure 2). Do not tighten hardware at this time.
2. Locate (2) M12 x 30mm Hex Head Bolts, (2) M12 Lock Washers, and (2) M12 Flat Washers. Line up the holes on the bottom of the Rear Bumper to the holes on the bottom of the frame. Secure the bottom of the Bumper to the frame by using hardware listed in this step (Figure 2). Tighten all hardware at this time.

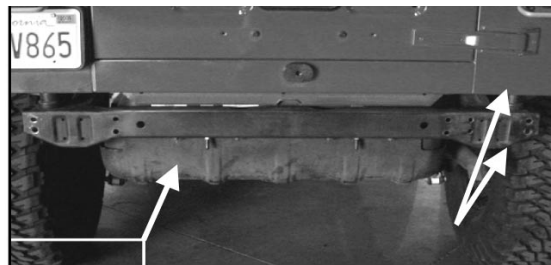
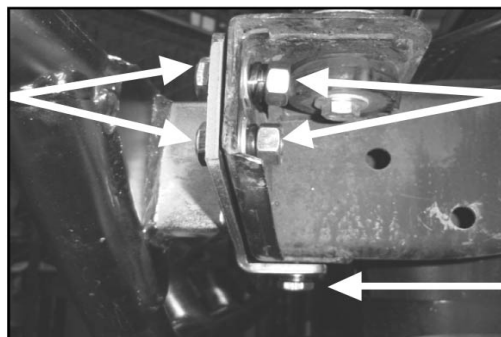


Figure 2

**M12x30mm Hex Head Bolt
M12 Flat Washer**



- **M12 Flat Washer**
- **M12 Lock Washer**
- **M12 Nut**

- **M12 Flat Washer**
- **M12 Lock Washer**
- **M12 Nut**

Figure 3

Tire Carrier Installation Instructions

Grease all bushings and pivot hardware with a light assembly grease before final installation for smooth and squeek free operation

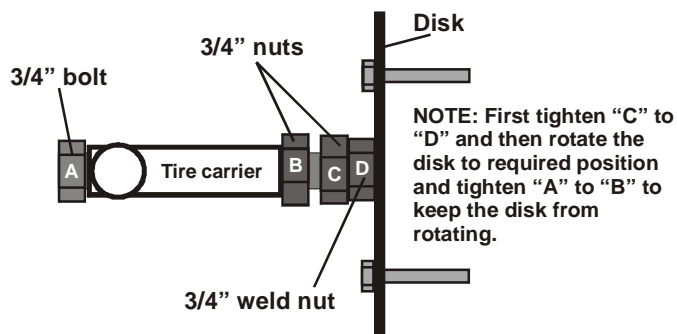
1. Insert 3/4 washers as shown in fig. 1. Place carrier into mounting block on bumper and install the 3/4 bolt as shown in Fig. 1 with washer. Locate bolt through bottom of bumper. Install 3/4 nylock nut and tighten.
2. Check to make sure carrier swings freely and latches to the bumper securely.
3. Locate the 1-1/4 x 8-1/2 bolt and place it through the top tube of the carrier as shown in Fig. 2. Install 1-1/4 nut and tighten. Install second 1-1/4 nut and leave loose at this time.
4. Measure your wheels. Measure the distance from the backpad of your wheels to the outside of the tire. Install the wheel plate on the bolt and adjust to this dimension as shown in fig. 2. Tighten the second nut installed in the previous step against the plate to lock in place.
5. Check to make sure the tire is tight against the carrier. Fully tighten all hardware at this time.
6. Review your installation and open and close carrier to ensure proper alignment and latching.



Fig. 1



Fig. 2



Rampage(the company) warrants to the original purchaser of this product that should the product or any part thereof, under normal use and conditions, be proven defective in material or workmanship within 12 months from date of original purchase, such defect(s) will be repaired or replaced (at the Company's option) without charge for parts or repair labor. Please note that installation labor to remove or install this product is not covered under this limited warranty.

To obtain repair or replacement within the terms of this Warranty, the product is to be delivered with proof of warranty coverage (e.g. dated bill of sale), specification of defect(s), freight pre-paid to the place of purchase or, you must contact Rampage Products at the number below for warranty service or to obtain a Return Goods Authorization Number.

NOTE: Items returned to Rampage Products without an Authorized Returns Good Authorization number will be refused and returned back to sender at the sender's expense.

This warranty does not apply to any product or part thereof which, in the opinion of the Company, has suffered or been damaged through alteration, improper installation, mishandling, misuse, neglect, accident or by acts of nature. THE EXTENT OF THE COMPANY'S LIABILITY UNDER THIS WARRANTY IS LIMITED TO THE REPAIR OR REPLACEMENT PROVIDED ABOVE AND, IN NO EVENT, SHALL THE COMPANY'S LIABILITY EXCEED THE PURCHASE PRICE PAID BY PURCHASER FOR THE PRODUCT.

This warranty is in lieu of all express warranties or liabilities. ANY IMPLIED WARRANTIES, INCLUDING ANY IMPLIED WARRANTY OF MERCHANTABILITY, SHALL BE LIMITED TO THE DURATION OF THIS WRITTEN WARRANTY. ANY ACTION FOR BREACH OF ANY WARRANTY HEREUNDER INCLUDING ANY IMPLIED WARRANTY OF MERCHANTABILITY MUST BE BROUGHT WITHIN A PERIOD OF 12 MONTHS FROM ORIGINAL PURCHASE. IN NO CASE SHALL THE COMPANY BE LIABLE FOR ANY CONSEQUENTIAL OR INCIDENTAL DAMAGES FOR BREACH OF THIS OR ANY OTHER WARRANTY, EXPRESS OR IMPLIED, WHATSOEVER. No person or representative is authorized to assume for the Company any liability other than expressed herein in connection with the sale of this product.

Some states do not allow limitations on how long an implied warranty lasts or the exclusion or limitation of incidental or consequential damage, therefore above limitations may not apply to you. This Warranty gives the purchaser specific legal rights. The purchaser may have additional rights, which vary from state to state.

Rampage Products, Inc.
9225 Stellar Ct. Unit C.
Corona Ca, 92883
Phone: 951-277-4949
www.rampageproducts.net