

INSTRUCTIONS—INSTRUCCIONES—CONSIGNES

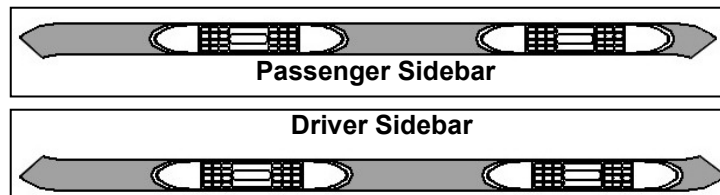
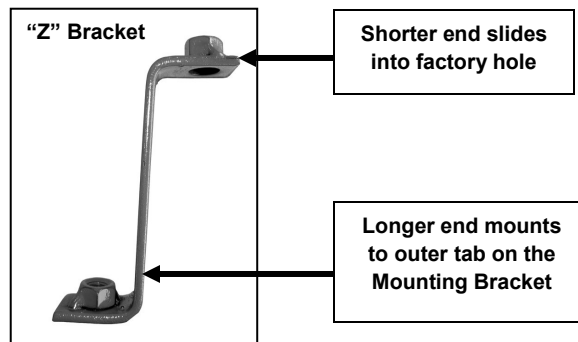
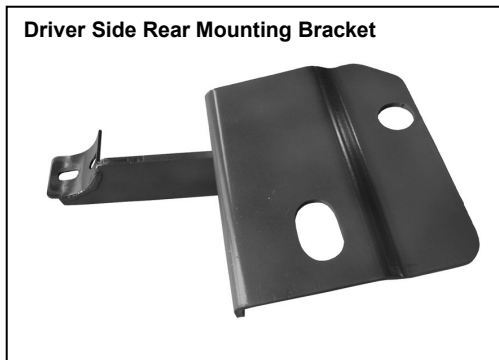
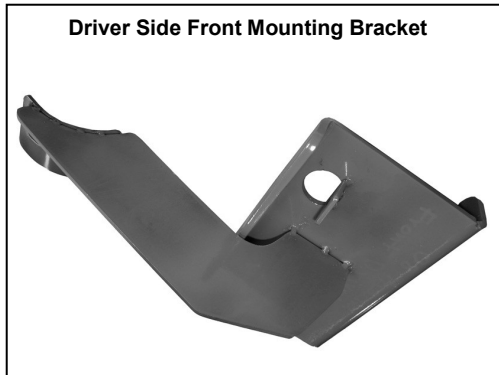
APPLICATION: 07-09 GMC ACADIA
APP. PART # 23-3380, 23-3385
3" ROUND STEP BARS

ITEM	QUANTITY	DESCRIPTION	TOOLS NEEDED
1	2	STEP BARS	18MM SOCKET
2,3	2	FRONT MOUNTING BRACKET (2) DRIVERS SIDE, (3) PASSENGER SIDE	13MM SOCKET
4,5	2	REAR MOUNTING BRACKET (4) DRIVERS SIDE, (5) PASSENGER SIDE	RATCHET
6	2	"Z" BRACKETS	TORQUE WRENCH
7	12	M8 HEX HEAD BOLTS	
8	10	M8 LOCK WASHERS	
9	10	M8 FLAT WASHERS	
10	6	M12 SQUARE WASHERS	
11	6	M12 LOCK WASHERS	
12	6	M12 HEX NUTS	
13	6	M12 BOLT PLATES	
14	6	M12 FLAT WASHERS	

1. Remove contents from box , verify all parts listed are present and free from damage. Carefully read and understand all instructions before attempting installation.
2. On the passenger side, locate the three factory holes on the floor panel rail towards the front of the vehicle. There is an oval and a round factory hole on the bottom floor panel rail and a round factory hole on the side of the floor panel rail.
3. Insert (1) M12 Bolt Plate into the slotted factory hole (Figure 1). NOTE: Do not center the Bolt Plate in the factory hole, the shorter end of Bolt Plate should be pushed to one side of the factory hole in order to fully engage.
4. Position passenger side front Mounting Bracket up to the vehicle and over already inserted Bolt Plate. NOTE: The hole pattern on the Mounting Bracket matches the hole pattern on the vehicle. Partially hang Mounting Bracket to Bolt plate using the included (1) M12 Hex Nut and (1) M12 Square Washer (Figure 1).
5. Insert the shorter end facing up of a "Z" Bracket through the bottom rounded hole in Mounting Bracket and through factory hole located on the bottom of the floor panel rail. Orient "Z" Bracket to the factory hole located on the side of the floor panel rail (Figure 2).
6. Secure the side of the Mounting Bracket to the side of the floor panel rail using the included (1) M8 Hex Head Bolt, (1) M8 Lock Washer, and (1) M8 Flat Washer (Figure 3 & 4). Hand tighten at this time.
7. Attach the opposite end of "Z" Bracket to the tab on the Mounting Bracket using the included (1) M8 Hex Head Bolt (Figure 4 & 5). Hand tighten at this time.
8. Locate the slotted and the rounded hole towards the rear of the floor panel rail. NOTE: There are three round holes towards the rear of the floor panel rail, two large and a small one. Use the larger hole towards the front of the vehicle. Insert (1) M12 Bolt Plate into each of the factory holes (Figure 6). NOTE: Do not center the Bolt Plate in the factory hole, the shorter end of Bolt Plate should be pushed to one side of the factory hole in order to fully engage.
9. Position passenger side Rear Mounting Bracket up to the vehicle and over the already inserted Bolt Plates. Partially hang Mounting Bracket to Bolt Plates using the included (2) M12 Square Washers and (2) M12 Hex Nuts (Figure 7). Hand tighten at this time.
10. Position passenger Sidebar onto Mounting Brackets. Attach Sidebar to Mounting Brackets using the included (4) M8 Hex Head Bolts, (4) M8 Lock Washers, and (4) M8 Flat Washers (Figure 8).
11. Level and adjust Sidebar properly; and then tighten all hardware at this time. IMPORTANT! Do not move the Mounting Brackets too much when adjusting the Sidebar; this may cause Bolt Plates to disengage. Torque all M12 fasteners to 50-55 ft lbs, M8 to 30-35 ft lbs
12. Repeat steps 2 – 13 for driver Sidebar.

CARE INSTRUCTIONS

- REGULAR WAXING IS RECOMMENDED. DO NOT USE ANY TYPE OF POLISH OR WAX THAT MAY CONTAIN ABRASIVES
- STAINLESS STEEL PRODUCTS CAN BE CLEANED WITH MILD SOAP AND WATER. STAINLESS STEEL POLISH SHOULD BE USED TO POLISH SMALL SCRATCHES.
- GLOSS BLACK FINISHES SHOULD BE CLEANED WITH MILD SOAP AND WATER



Westing Automotive Products, Inc.
5200 N. Irwindale Ave. Suite 220
Irwindale, Ca. 91706

3/23/2011 P.N.: 75-0052-RevA

Thank You for choosing Westin products
For Additional installation assistance please call
Customer service (800) 793-7846
www.westinautomotive.com

Passenger Side Front Mounting Bracket Shown

M12 Bolt Plate
M12 Square Washer
M12 Hex Nut
M12 Flat Washer

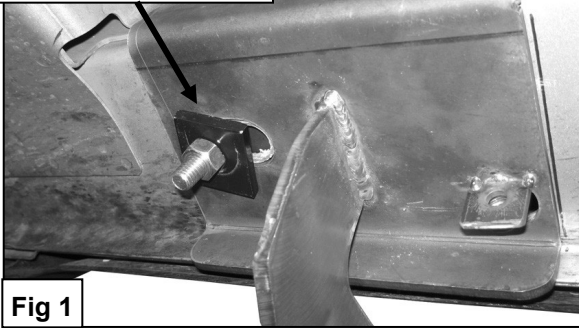


Fig 1

Shorter end of "Z" Bracket

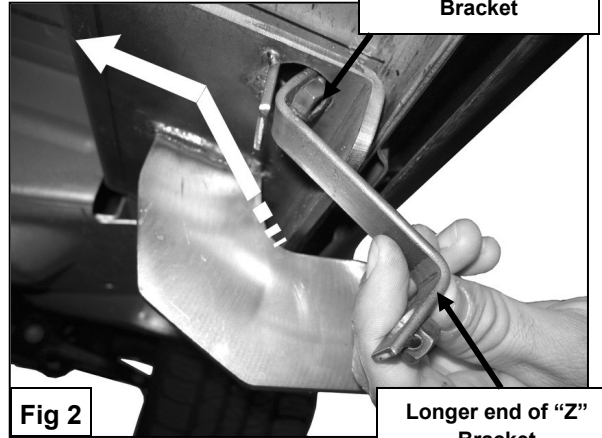


Fig 2

Longer end of "Z" Bracket

Passenger Side Front Mounting Bracket Shown

M8 Hex Bolt
M8 Flat Washer
M8 Lock Washer

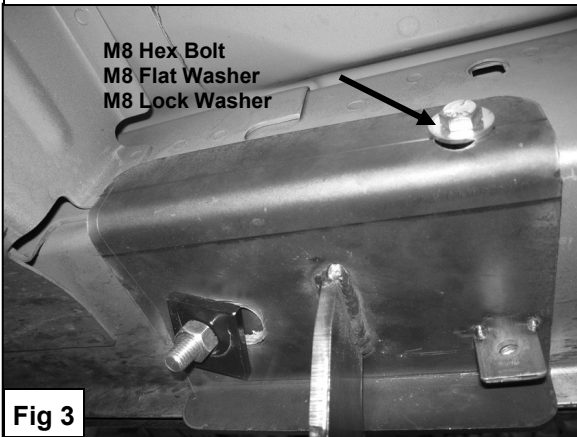


Fig 3

Driver Side Front Mounting Bracket Shown

Bolt Plate

M8 Hex Bolt
M8 Flat Washer
M8 Lock Washer

"Z" Bracket

Inner View of Front Mounting Bracket

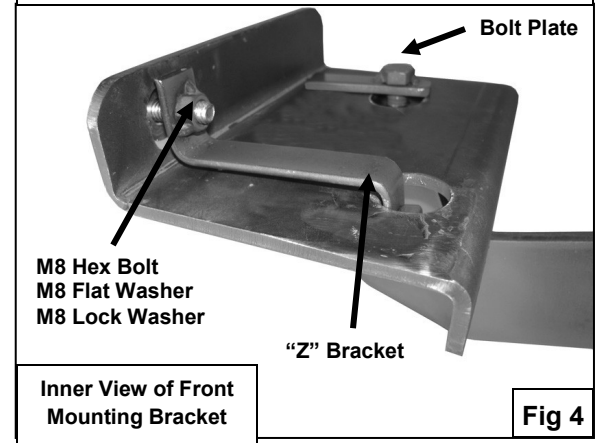


Fig 4

Driver Side Front Mounting Bracket Shown

M8 Hex Bolt

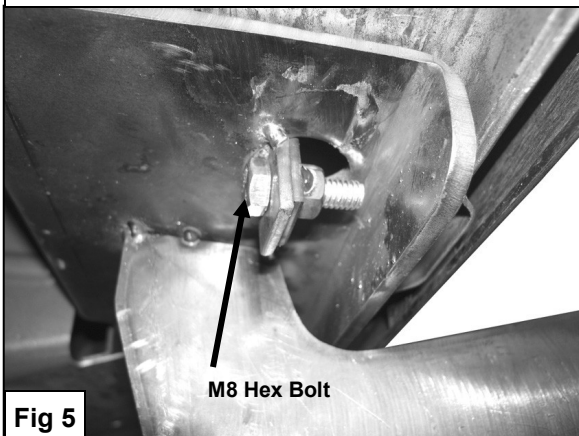


Fig 5

M12 Bolt Plates

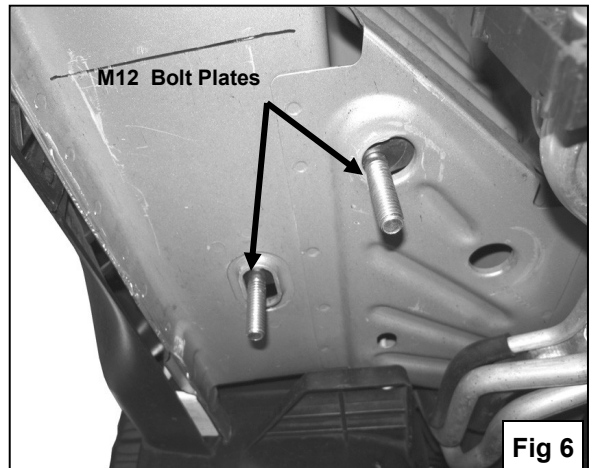


Fig 6

Westin.
SIGNATURE OF QUALITY

Westing Automotive Products, Inc.
5200 N. Irwindale Ave. Suite 220
Irwindale, Ca. 91706

3/23/2011 P.N.: 75-0052-RevA

Thank You for choosing Westin products
For Additional installation assistance please call
Customer service (800) 793-7846
www.westingautomotive.com

Passenger Side Rear Mounting Bracket Shown

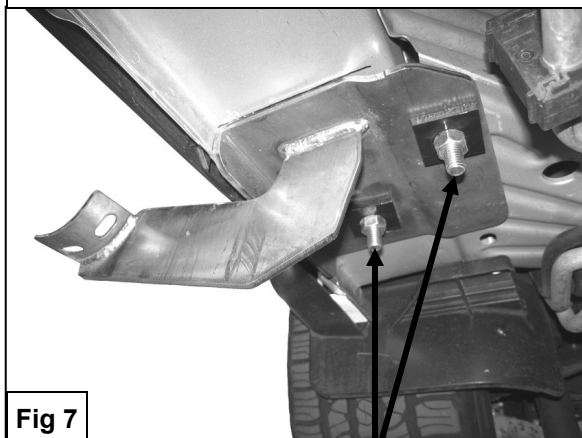


Fig 7

(Bolt Plates)
M12 Square Washer
M12 Hex Nut
M12 Flat Washer



Fig 8

M8 Hex Bolts
M8 Lock Washers
M8 Flat Washers



Westing Automotive Products, Inc.
5200 N. Irwindale Ave. Suite 220
Irwindale, Ca. 91706

3/23/2011 P.N.: 75-0052-RevA

Thank You for choosing Westin products
For Additional installation assistance please call
Customer service (800) 793-7846
www.westingautomotive.com