



INSTALLATION INSTRUCTIONS

1075 North Ave. Sanger, CA 93657-3539

toll free: 800-445-3767

web: www.belltechcorp.com

6450 FLIP KIT Nissan Titan 05

Congratulations! You were selective enough to choose a BELLTECH PRODUCT. We have spent many hours developing our line of products so that you will receive maximum performance with minimum difficulty during installation.

Note: Confirm that all of the hardware listed in the parts list is in the kit. **Do not** begin installation if any part is missing. Read the instructions thoroughly before beginning this installation.

Warning: **DO NOT** work under a vehicle supported by only a jack. Place support stands securely under the vehicle in the manufacturer's specified locations unless otherwise instructed.

Warning: **DO NOT** drive vehicle until all work has been completed and checked. Torque all hardware to values specified.

Reminder: Proper use of safety equipment and eye/face/hand protection is absolutely necessary when using these tools to perform procedures!

NOTE : This is a relatively complex installation and as such we recommend that a qualified mechanic perform it.

RECOMMENDED TOOLS:

- Properly rated floor jack, support stands, and wheel chocks
- Combination wrench set
- Torque wrench: *0-120 lb ft. range*
- Ratcheting socket wrench and socket sets
- Safety Glasses

KIT INSTALLATION

SPECIAL NOTE:

- We recommend this procedure to keep this compartment weatherproof.
- Remove Driver side rear plastic wheel well cover to access two (2) front compartment bolts. (1 screw, 2 push clips) (photo 1)
- This installation will require the removal of the storage compartment rear driver's side. (photo 2, 3)
- Remove the two bolts to the front and four bolts to the rear of the compartment. (photo 4, 5)
- Remove the plastic snaps also, (pull apart)

OTHERWISE:

- A hole can be cut in the back panel of the compartment to access the shackle bolts.
- This will render the compartment non-weatherproof.

THIS CHOICE IS YOURS TO MAKE.

1. Open the hardware kit and remove all of the contents. Refer to the part list (Page 3) to verify that all parts are present.
2. Park the vehicle on a smooth level asphalt or concrete surface. Place a block in front of and behind the front wheels. Jack up the rear of the vehicle and place jack stands securely under the frame in the manufacturer's specified locations. Remove the rear wheels.
3. Position the jack stands under the rear axle and the differential to hold up the drive shaft. (photo 6, 7)

THE FOLLOWING IS TO BE DONE ON BOTH SIDES OF THE VEHICLE AT THE SAME TIME.

4. Disconnect vacuum lines and other accessories from axle. (photo 8)
5. Remove sway bar (if equipped) (photo 9, 10)
6. Remove shocks. (photo 11, 12)
7. Remove leaf spring u-bolts and lower plate. Make sure the weight of the axle is secured by the jack stands. (photo 13)
8. Remove front leaf spring bolt. (photo 14)
9. Remove lower shackle bolt. (photo 15)
10. Remove leaf spring with shackle attached.
11. Remove shackle and re-attach to the BELLTECH leaf spring with bolt facing towards frame and the nut out, repeat this procedure on both sides.(photo 15)
12. Raise the axle so that the new leaf springs can be installed **BELOW THE AXLE, SHORT SIDE OF THE LEAF SPRING GOING FORWARD, LARGE DIAMETER HOLE IS IN FRONT**, on the passenger side you will first have to move the new leaf spring into place above the exhaust pipe and then into position to install the shackle bolt. Then you will be able to install the front bolt.
13. Install the front bolt first, support leaf with jack stand on the middle of the leaf and flex rear section of the leaf to install rear shackle bolt.
14. Install the new axle saddle, the saddle is centered so it will fit either direction.
15. Install the OEM bump stop and u-bolt plate onto the axle.
16. Place the u-bolts over the upper u-bolt plate and into the lower plate, attach nuts but do not tighten at this time. When you repeat this procedure on the other side, you may have to move the axle and the saddle such that the differential is parallel to the vehicle. Once the differential is parallel, the u-bolt nuts can be tightened. Tighten each side evenly to OEM specifications. (photo 16, 17)
17. Tighten the front leaf spring bolts to OEM specifications.
18. Install your shocks and torque the original nut and bolt to 105-110 Ft.-lb.
19. Re-assemble the vacuum lines, brackets, and other accessories to the axle.

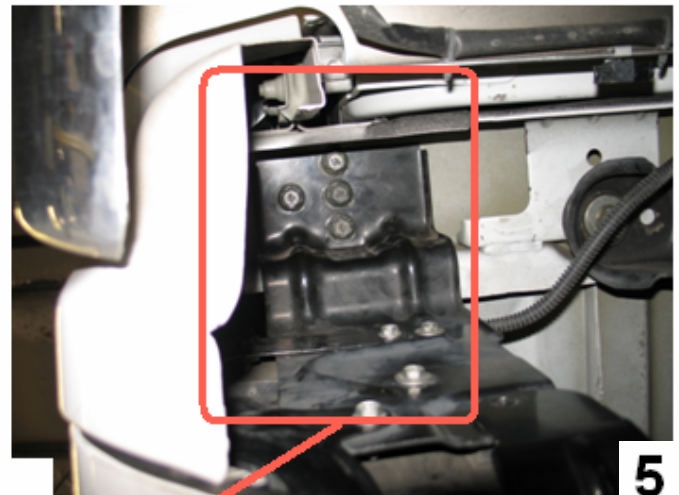
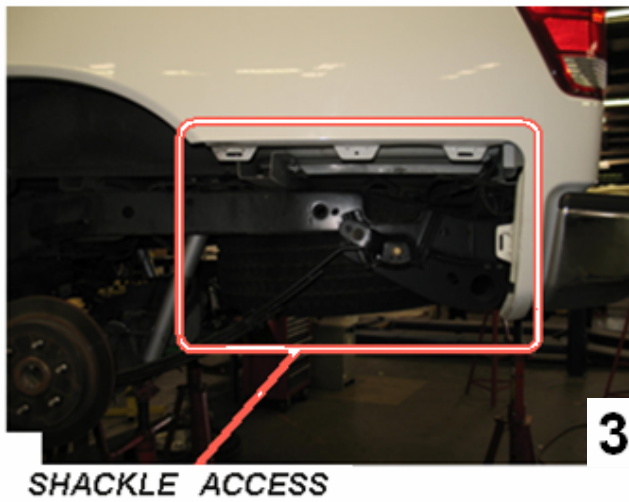
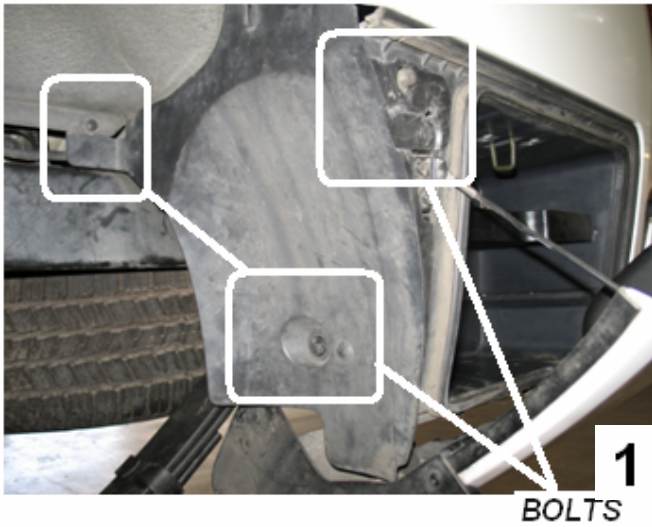
WARNING: IF YOU TIGHTEN THE SHACKLE ASSEMBLY WHILE AT FULL DROOP, THE CORRECT SHACKLE POSITION AND DROP WILL NOT BE CORRECT.

20. At this time, the shackle bolts are still loose. In order to insure the correct angle for the shackle, the vehicle must be lowered to the ground. Re-install the wheels and tires and torque the lug nuts to 80-85 ft.-lb., lower the vehicle to the ground. Once on the ground, tighten the shackle bolts.

21. Re-install the storage compartment.

PART NUMBER	DESCRIPTION	QUANTITY
6450-020	AXLE SADDLE	2
6450-012	U-BOLT LOWER PLATE	2
3910-003	U-BOLT	4
110670	9/16 WASHER	8
5981-001	LEAF SPRING	2
110455	9/16 NUT	8

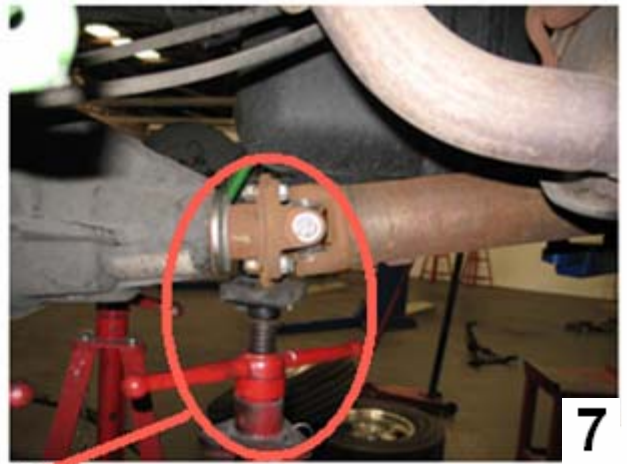
STORAGE COMPARTMENT REMOVAL



BOLTS



6



7

JACK STANDS



8

CAREFUL REMOVING



9



10

ANTI SWAY BAR
MOUNTING



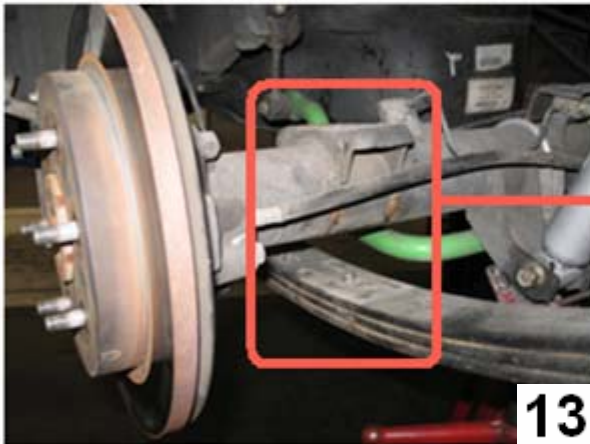
SHOCK BOLT

11



SHOCK BOLT

12



**LEAF SPRING BOLTS, LOWER
PLATE REMOVED**

13



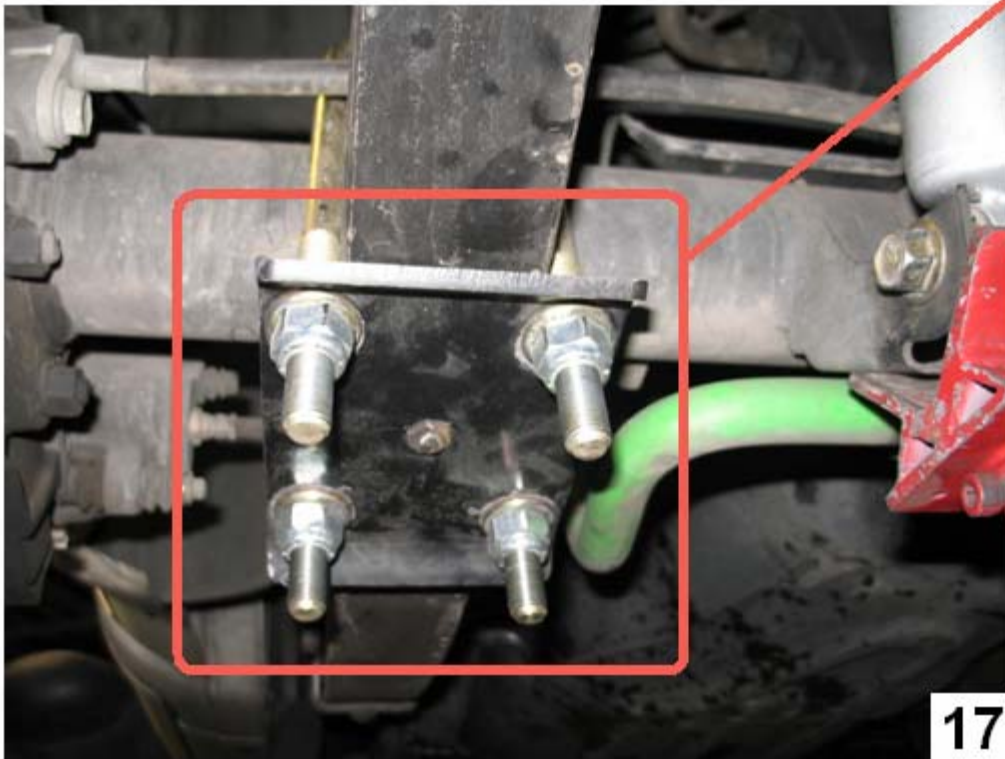
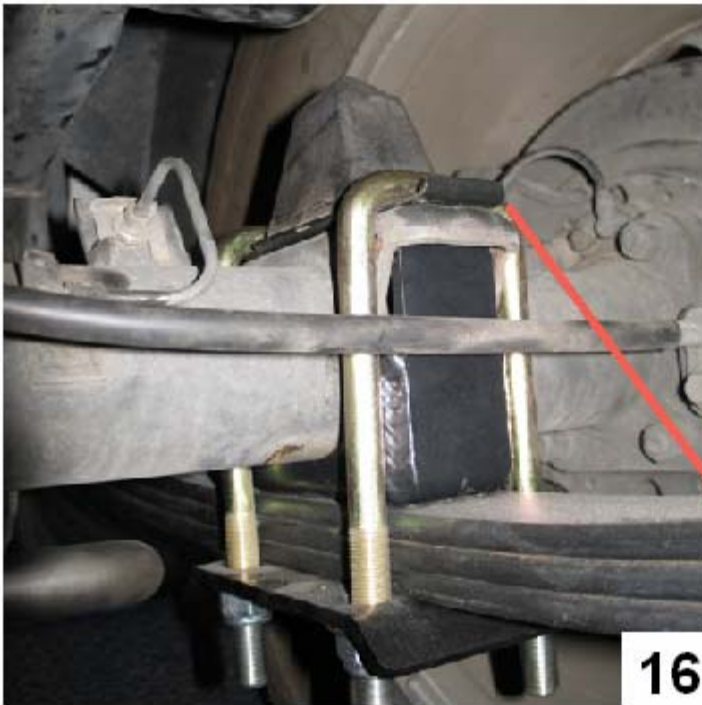
14

LEAF SPRING BOLTS

LOWER SHACKLE BOLT



15



UPPER AND
LOWER
SPRING
PLATES