

T-REX

Billet Grilles

61181

**02-06 CADILLAC
ESCALADE &
EXT & ESV**

61181

**02-06 CADILLAC
ESCALADE &
EXT & ESV**

CNC PLATINUM SERIES BILLET GRILLE – w/ Mounting Plate

Recommended Tools:

3/8" Wrench or Nut Driver
10MM Socket & Ratchet
Die Grinder/ Jig Saw
Drill & 1/8" Drill Bit
Slotted Screwdriver

Parts List / Hardware:

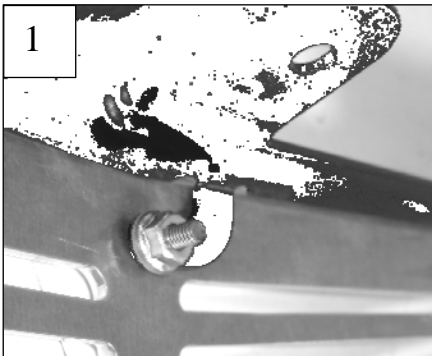
1	Platinum Grille (VERTICAL)	4	#8 X 3/4 Phillips Screws
1	Top Mounting Plate	4	#8 Flat Nuts
4	10-32 x 2.5" Threaded Studs	2	Flat Brackets 4 3/8"
9	10-32 X 3/4" Threaded Studs	2	90' 'L' Brackets x 1 3/4"
13	10-32 Nylon Lock Nuts	2	90' 'L' Brackets x 2 3/8"
15	#10 Flat Washers	1	10-32 x 1 Allen Head Screw
1	10-32 Flange Nut		

Read and understand instructions before attempting installation

NOTE: Pictures may not match actual product purchased; however installation is correct.

Step 1

Remove the plastic radiator cover using a small slotted screwdriver. Un-bolt the 10mm bolt in the center-top of the grille. Each corner is held in place with a metal clip. Pry with a screwdriver; remove the grille. Use a heat gun or hair dryer to loosen the double-sided tape securing the OE logo; then remove the emblem using a putty knife or screwdriver. To prevent scratching, apply masking tape to the painted surfaces on the grille.

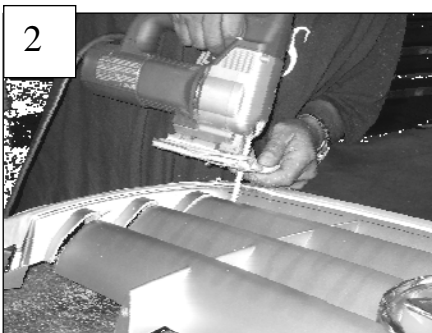


Step 2

Thread the studs into the holes on the back of the grille. **BE SURE NOT TO OVER-TIGHTEN THE STUDS.** Over-tightening can cause dimpling to the face of the billet. Install the 5 short 1" studs along the top and 4 along the bottom. The longer 2.5" studs install on each end. Fasten the top mounting plate using the nylon lock nuts and washers (1).

Step 3

Use a die grinder or similar tool to cut the inner bars from the grille. The black lines drawn on the grille illustrate where you will cut.



On each end; make your cuts about 1" inside the chrome molding. Do not cut too close; the billet rests on this uncut area (2). On top of the grille (next to the factory mounting clips), make your cut about 5/16" inside the chrome border.

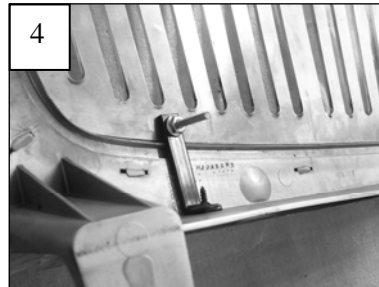
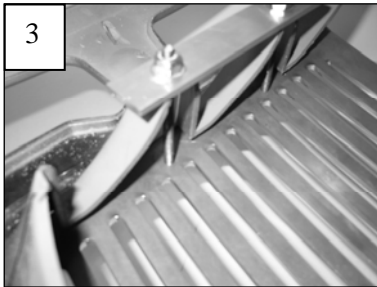
Along the bottom; make your cut about 1/16" to 1/8" inside the chrome ring. Taper the cut on each end into the cut along the bottom

61181

61181

Step 4

Center the billet into the opening of the grille shell. Fasten the flat brackets on each end using the Nylon lock nuts and washers (3). Tighten the nuts until the billet is held firmly in place. Attach the shorter 'L' brackets to the center studs along the bottom; and the longer 'L' brackets to the outer studs (4). Use the nuts and washers provided. Hold the grille firmly in place and drill a 1/8" hole aligned with the brackets. Attach the #8 screws and flat nuts to the brackets. Make sure the grille is properly aligned; loosen the hardware and adjust the grille if needed. The grille is designed to overlap the chrome ring around the opening for proper fit.



Step 5

Install the factory emblems onto the grille. The factory double sided tape may be re-used; however if the tape has lost tack, new tape or a small amount of super glue will help hold the logo.

Step 6

Re-install the grille assembly onto the vehicle. Attach the mounting tab on the top plate to the factory hole in the hood latch assembly (a 1/4" hole may need to be drilled depending on year of vehicle). Use the 10-32 Allen head screw, flange nut and washers provided (5). The factory hood bump stops and hood latch assembly may need adjustment. Slowly close the hood and check the clearance between the hood and grille. Install the radiator cover using the factory fasteners. ***Thank you for purchasing your T-Rex billet grille. 6/19/06***

