

advanced FLOW engineering

Stage 2

Instruction Manual P/N: 51-11892 & 54-11892

Make: **Volkswagen** Model: **GTI** Year: **2009-2010** Engine: **L4-2.0L (t)**



- Please read the entire instruction manual before proceeding.
- Ensure all components listed are present.
- If you are missing any of the components, call customer support at 951-493-7100.
- Ensure you have all necessary tools before proceeding.
- Do not attempt to work on your vehicle when the engine is hot.
- Disconnect the negative battery terminal before proceeding.
- Retain factory parts for future use.

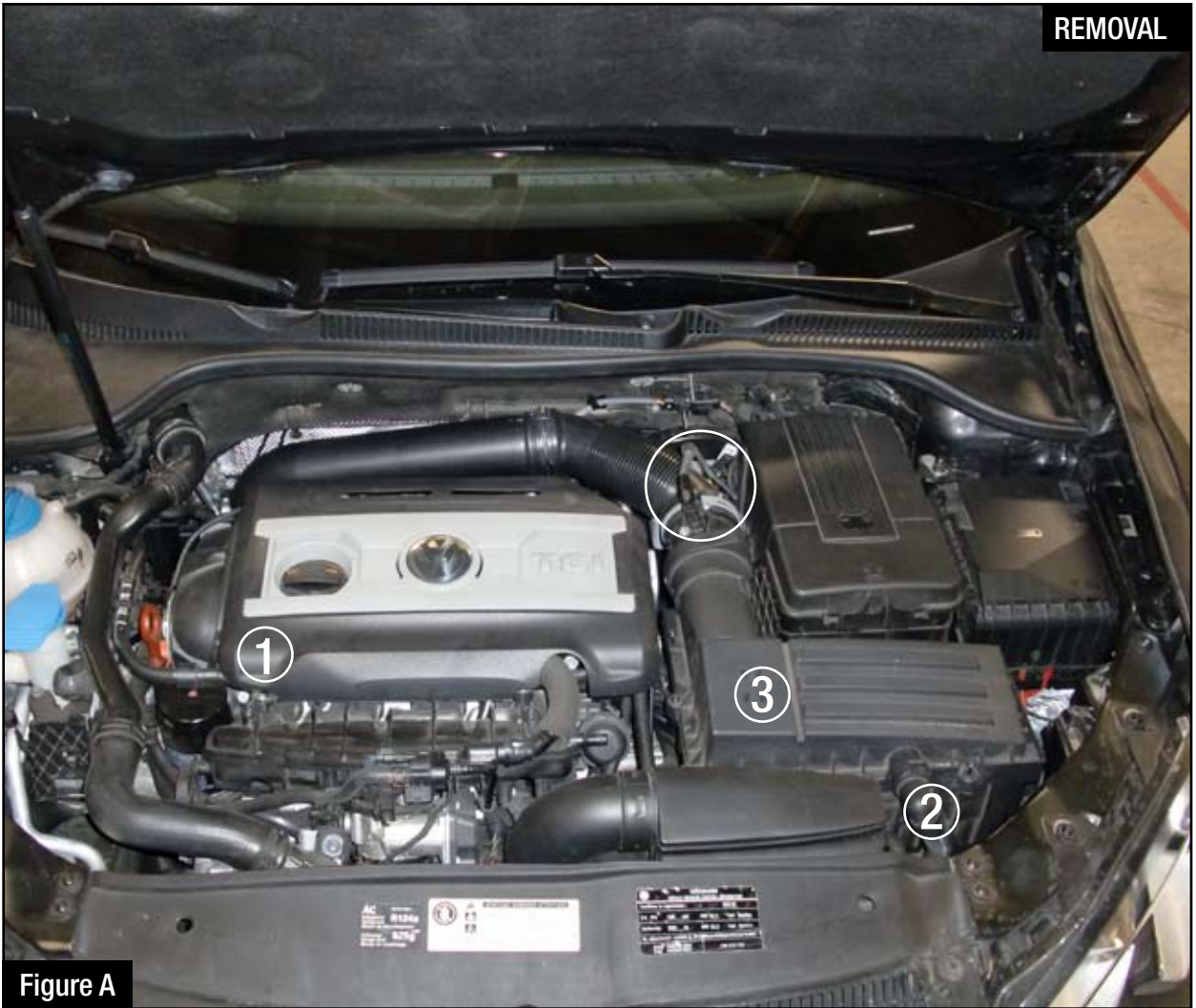
Label	Qty.	Description	Part Number
A1	1	Pro Dry S Air Filter	21-90067 (Included in 51-11892)
A2	1	Pro 5R Air Filter	24-90067 (Included in 54-11892)
B	1	Housing	05-11892B2
C	1	Intake Tube	05-11892B1
D	1	Injection Molded Adaptor	05-01037
E	1	Elbow Coupling	05-00395
F	1	Silicone Reducer Coupling	05-60047
G	2	Clamp #52	03-50008
H	1	Clamp #48	03-50007
I	1	Clamp #44	03-50019
J	1	Crank Case Fitting	05-01109
K	1	Smog Pump Fitting	05-01096
L	1	Rubber Grommet	03-50128
M	2	Cheese Head Screw	03-50034
N	3	Button Head Screw	03-50102
O	1	Hex Head Screw	03-50052
P	1	Flat Washer	03-50043
Q	1	T20 Torx Bit	03-50066

Installation will require the following tools:

4mm Hex Key, Needle-Nose Pliers, 7/16" Socket, 5/16" Socket or Nut Driver, T25 Torx Bit, 5 Star Security Torx Bit (If available), Ratchet, Extension, Phillips & Flat-Head Screw Driver

Note: Legal in California for use on race vehicles only. The use of this device on vehicles used on public streets or highways is strictly prohibited in California and others states that have adopted California emission regulations.





Refer to Figure A for steps 1-2

Step 1: Remove the engine cover (1). Disconnect the wiring harness from the MAF sensor.

Step 2: Loosen the screws securing the upper airbox to the lower airbox. Note: the screws are captive and will not separate from the upper airbox. Remove the two screws securing the MAF sensor housing to the upper airbox. Disconnect the breather pipe from the upper airbox (2). Remove the upper airbox from the vehicle (3).



Refer to Figure B for step 3

Step 3: Remove the air inlet duct cover from the vehicle (1). Remove the lower airbox mounting bolt. Remove the lower airbox from the vehicle. Note: the lower airbox is retained by two grommets and some upward force is required to remove the lower airbox. Remove the remaining portion of the air inlet duct from the vehicle. Remove the MAF sensor from the air intake tube (2).



Refer to Figure C for step 4

Step 4: Remove the air intake tube mounting bolt (1).

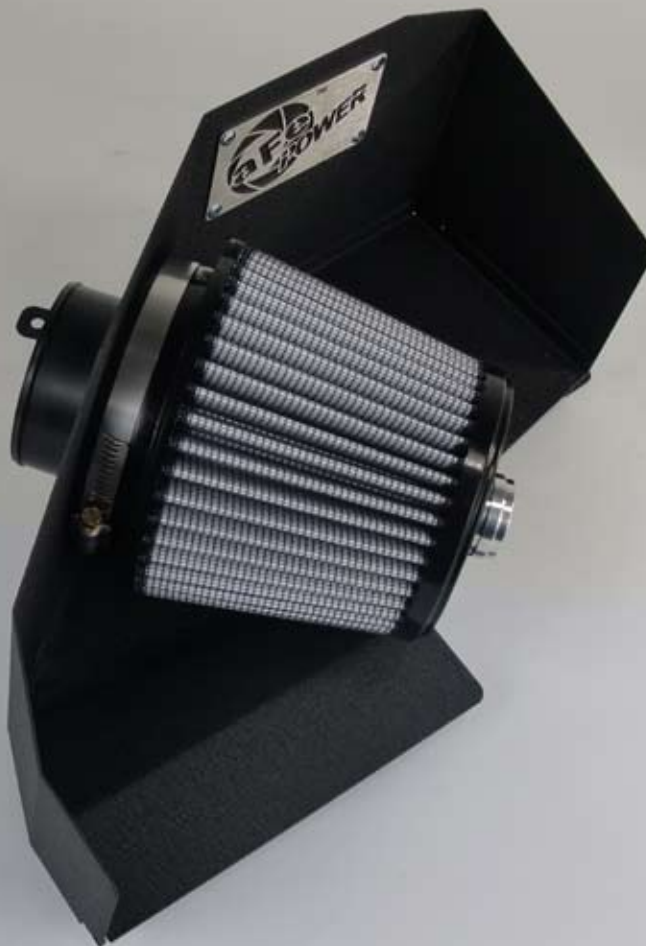
Loosen the clamp securing the air intake tube to the turbo. Disconnect the breather pipe from the air intake tube and remove the air intake tube from the vehicle (2). Note: Air intake tube has been removed for clarity.



Figure D

Refer to Figure D for step 5

Step 5: Install the high temperature coupling and supplied clamps on the turbo. Loosely install the air intake tube mounting bolt in the factory location. Install the aFe air intake tube and connect it to the turbo. Connect the breather pipe to the aluminum adaptor fitting.

**Figure E****Refer to Figure E for step 6**

Step 6: Install the air filter adaptor to the aFe air filter housing using the supplied button head screws and tighten. Install the aluminum adaptor fitting in the top of the aFe air filter. Install the aFe air filter on the air filter adaptor and tighten the clamp.



Figure F

Refer to Figure F for step 7

Step 7: Remove the electrical enclosure mounting bolt and the headlight housing screw. Note: these fasteners will be used to mount the aFe air filter housing. Install the aFe air filter housing and secure with the bolt and screw removed in the previous step. Connect the breather pipe to the adaptor fitting on the top of the air filter.



Figure G

Refer to Figure G for step 8

Step 8: Connect the air filter adaptor to the aFe air intake tube using the supplied elbow coupler. Align the air intake tube prior to tightening the clamps and mounting bolt. Install the MAF sensor in the aFe air intake tube using the supplied screws.



Figure H

Refer to Figure H for step 9

Step 9: Check that all components are tight and secure. Your installation is now complete.

NOTE: Retighten all connections after approximately 100-200 miles.



Page intentionally left blank

Page intentionally left blank



Pro DRY S Air Filter



P/N: 21-90067

Pro 5R Air Filter



P/N: 24-90067

Pre-Filters



P/N: 28-10081 Yellow
P/N: 28-10082 Red
P/N: 28-10083 Black
P/N: 28-10084 Blue

Pro DRY S Restore Kit



P/N: 90-59999

Blue Aerosol Restore Kit



P/N: 90-50001

Blue Squeeze Restore Kit



P/N: 90-50501

aFe Power Hat



P/N: 40-10083

aFe Key Chain

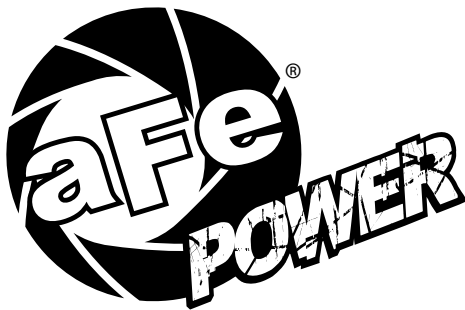


P/N: 40-10103

To purchase any of the items above, view airflow charts, dyno graphs, photos, and video; please go to aFepower.com.

Warranty

aFe warrants their intake systems to be free of defects from workmanship and materials for a period of two (2) years, provided the intake system was: A) installed in an aFe recommended application according to aFe installation instructions; and B) the air filter has been properly cleaned utilizing an aFe cleaning solution and oil (not applicable on Pro DRY S filters). Damage from abuse, improper cleaning, improper oil and improper installation or from open flame is not covered by this limited warranty. In the event of a defect of an aFe product within the period covered by this limited warranty, the purchaser can return the product to the dealer where it was purchased or send the product to aFe at the address listed on the back after obtaining a Return Good Authorization (RGA) number from aFe. The original register receipt will be required as proof of purchase. Purchaser will be entitled to a refund of the entire purchase price or a replacement of the product at aFe's discretion. Purchaser shall be responsible for the cost of shipping the defective product to aFe. An RGA number can be obtained by calling aFe customer service. Products shipped without an RGA number will be refused. A refund or replacement of the product shall be the sole remedy available under this limited warranty and aFe shall not be responsible for consequential or incidental damages. (Some states do not allow this exclusion or limitation of incidental or consequential damages, so the above limitation or exclusion may not apply). This warranty gives you specific legal rights, and you may have other rights, which vary from state to state.



advanced FLOW engineering, inc.

252 Granite Street Corona, CA 92879

TEL: 951.493.7100 • TECH: 951.493.7100 x23

E-Mail: Tech@aFepower.com

P/N: 06-80383