

# **FITTING INSTRUCTIONS**

## ARB – 1999 ONWARDS LANDROVER DISCOVERY SIDE STEP

**PRODUCT NUMBER**  
**4432030**

**FITTING KIT NUMBER**  
**6171394**

| USE                  | PART No     | QTY | DESCRIPTION               |
|----------------------|-------------|-----|---------------------------|
| SIDE STEP TO CHASSIS | 215612      | 2   | ARB DECAL                 |
|                      | 6151087     | 10  | BOLT M10 x 1.25 X 25mm    |
|                      | 4581040     | 20  | WASHER FLAT M10           |
|                      | 4581048     | 10  | WASHER SPRING M10         |
|                      | 6151133     | 10  | NUT M10                   |
| CHECKER TOP TO STEP  | 3193673 R/L | 1   | CHECKER TOP PLATE         |
|                      | 6151200     | 12  | M6 BOLT X 25 mm DOME HEAD |
|                      | 6151128     | 12  | M6 FLANGE NUT             |
|                      | 4581084     | 12  | M6 FLAT WASHER            |
| PLUGS TO STEPS       | 271BLK      | 8   | SIDE STEP RUBBER PLUGS    |

### TOOLS REQUIRED

10mm, 17mm SPANNERS & SOCKETS BLACK SILICONE, DRILL, 10mm DRILL BIT.

### ASSEMBLY SEQUENCE FOR SIDE STEPS.



Drilling out front body mount

1. Drill out holes in front and rear body mount brackets to 10mm.
2. See photos on left for detail.

### BEWARE

When fitting rails to :Active Cornering Enhancement : model, be careful of pipes above body mount when drilling holes.



Drilling out rear body mount.

- 3.Photos taken from left hand side of vehicle.

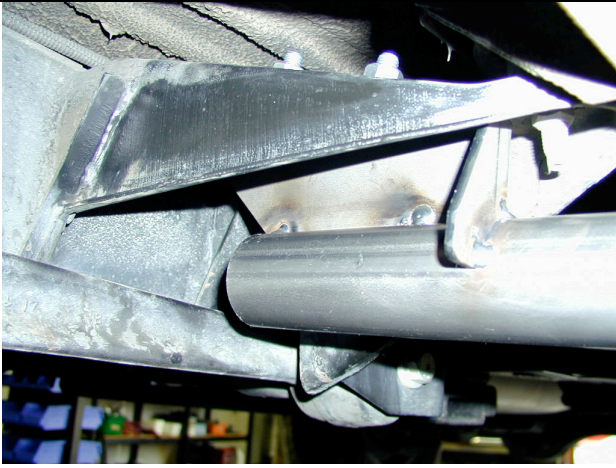


Rear LHS Bracket

- 4.Fit rubber plugs into front and rear of rail, and open end of support arms.



Front LHS Bracket.



5. With the help of a friend, lift rail up to vehicle and align rail mounting brackets with drilled out body mounts and secure to vehicle using 10mm hardware. Fit front mount bracket to vehicle first.
6. When all bolts, etc are fitted, tighten firmly.

Front bracket LHS



Rear bracket LHS.



7. Using a 10mm drill bit, drill out a hole in front bracket using existing hole as template.
8. Fasten to vehicle using 10mm hardware and tighten firmly.

See photo for detail.



9. Run a bead of silicone along top of step to eliminate vibration of checker top.
10. Position checker top on step, aligning the bolt holes to the corresponding step bracket holes and secure using M6 dome head bolts, flat washers and flange nuts.