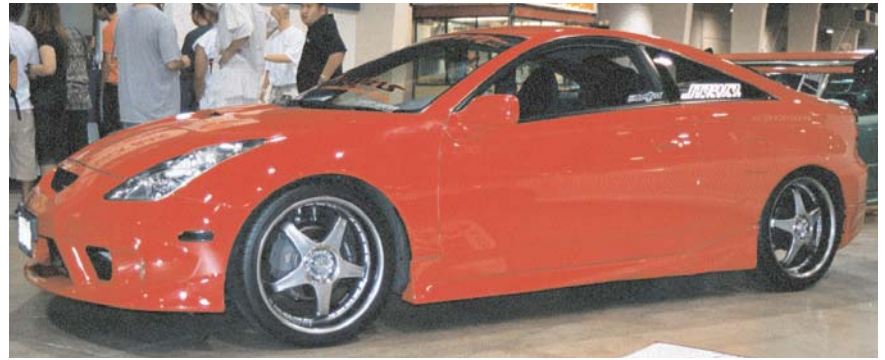




**Part Number IS2045**  
**00-03 Toyota Celica GTS**  
**6 speed and automatic**

**Contents Included:**

- 1- Injen Intake System
- 1- 2.75" Injen Filter (#1013)
- 1- 2.75" Straight Hose (#3043)
- 2- 3.00" small Clamps (#4003)
- 1- 1540 Bracket (#20007)
- 2- m6 Nut (#6002)
- 1- m6 Vibra mount (#6020)
- 2 - 18" 8mm Hose (#3091)
- 1- 15" 8mm Hose (#3091)
- 1- 11" 8mm Hose (#3091)
- 1- m6 x m16 bolt (#6005)
- 3- fender washers (#6010)
- 1- m6 Thin Washer (#6011)
- 3- Zip Ties (#8001)
- 1- 3mm Vacuum Cap (#8003)
- 1- License Plate Frame (#9010)
- 1- instruction



**Congratulations! You have just purchased the best engineered, dyno-proven intake system available.**

**Please check the contents of this box immediately.**

Report any defective or missing parts to the Authorized Injen Technology dealer you purchased this product from.

Before installing any parts of this system, please read the instructions thoroughly. If you have any questions regarding installation please contact the dealer you purchased this product from.

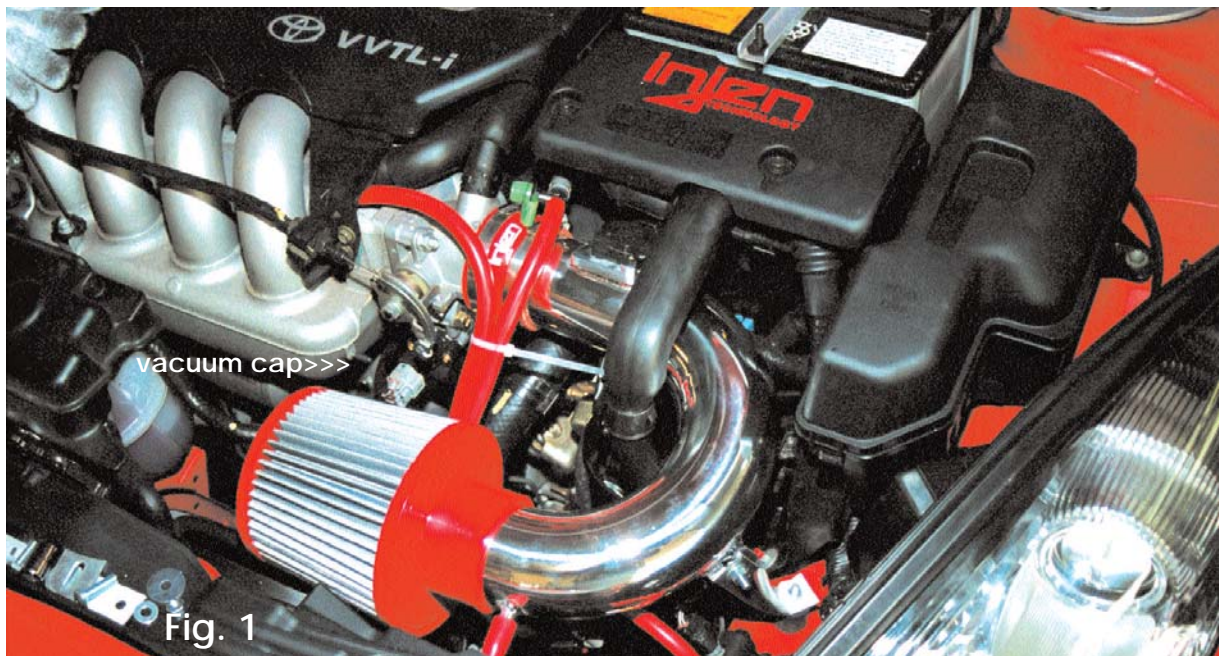
Installation DOES require some mechanical skills. A qualified mechanic is always recommended.

\*Do not attempt to install the intake system while the engine is hot. The installation may require removal of radiator fluid line that may be hot.

Injen Technology offers a limited lifetime warranty to the original purchaser against defects in materials and workmanship. Warranty claims must be handled through the dealer from which the item was purchased.

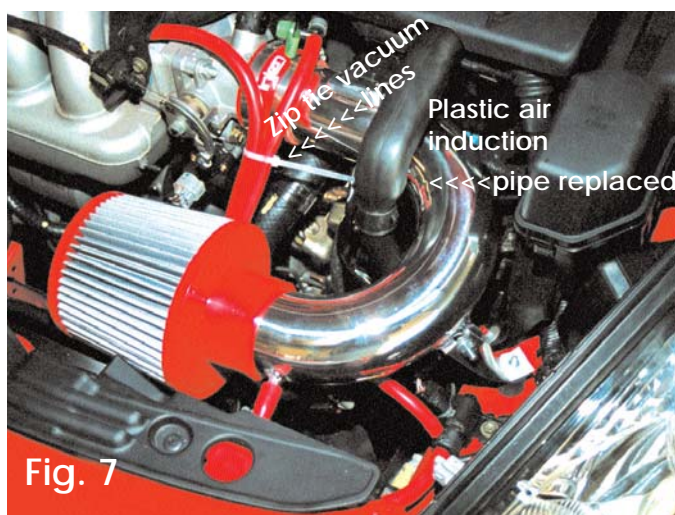
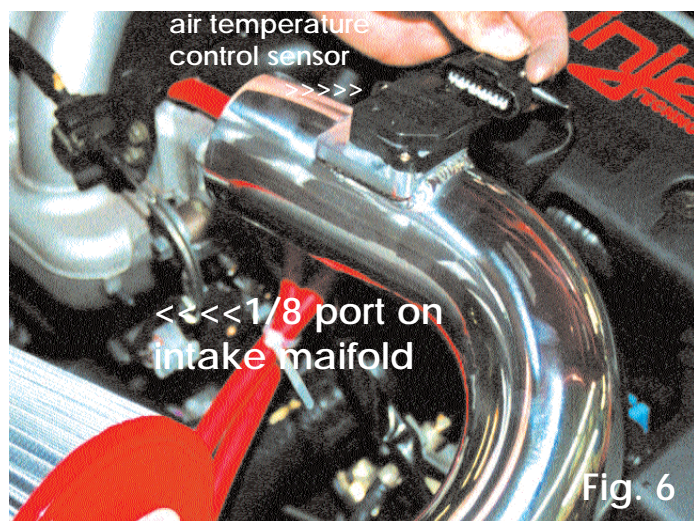
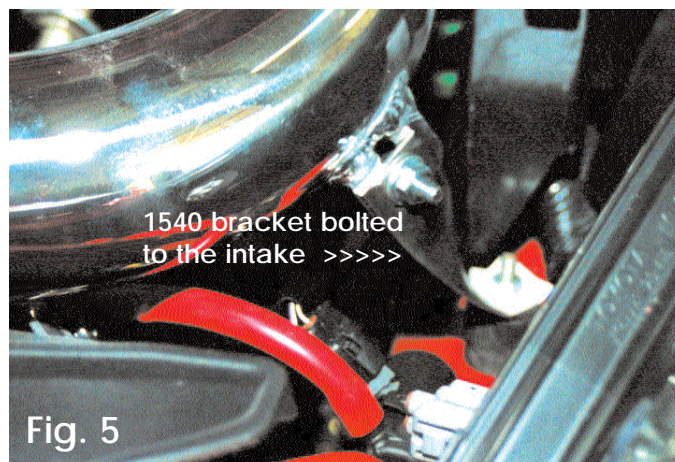
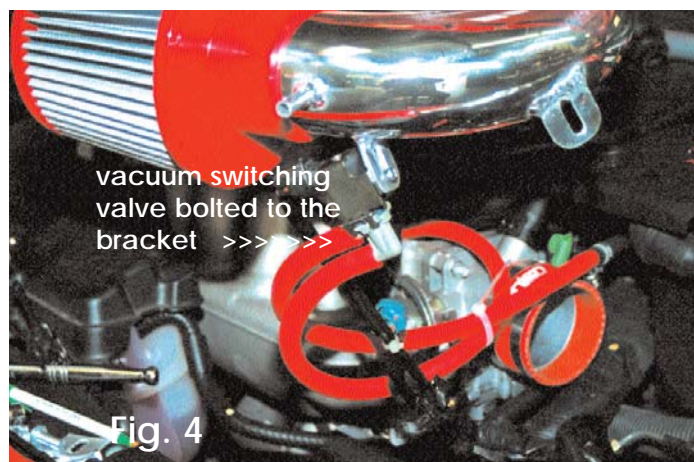
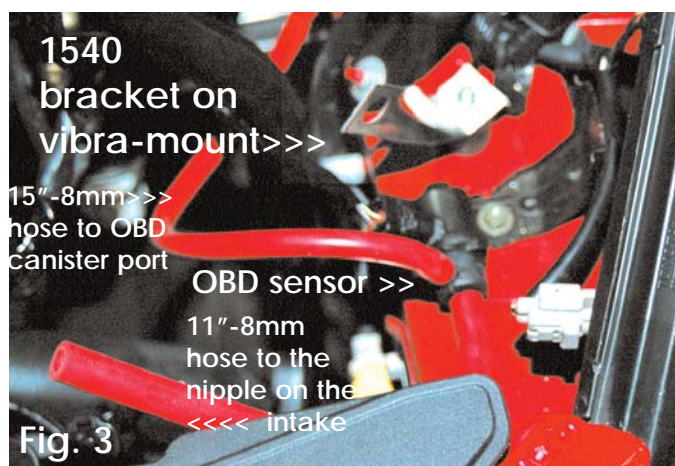
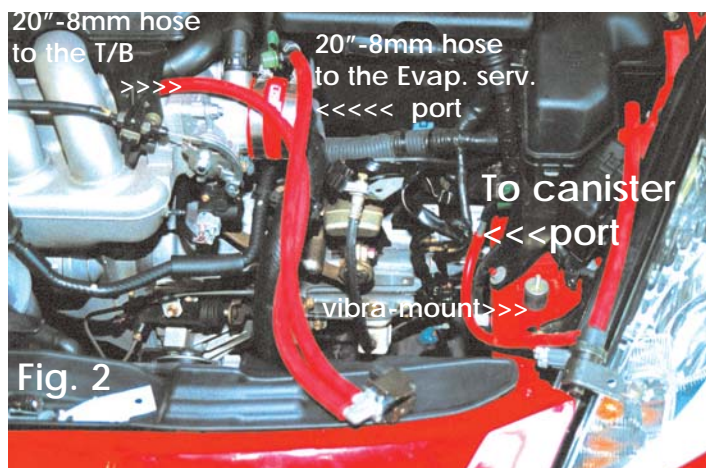
Injen Technology 285 Pioneer Place Pomona, CA 91768 USA

**Warning: This intake is extremely difficult to install. Injen insists that a professional installs this system.**



**Fig. 1**





**Note: Disconnect the battery terminal before installing this intake system**

**Step 1**

Remove the stock air box and unbolt the OBD sensor and vacuum switching valve from the stock air box. Do NOT remove any vacuum lines yet. Remove the air flow sensor from the stock air box and the 1.50" OD, black plastic tube that connects to the stock ECU.

**Step 2**

Slip the 2.75" straight hose onto the throttle body and use two clamp provided. See fig. 1

**Step 3**

Remove the small relay fuse box from the brace and set aside to allow for mounting of the OBD sensor-later in the instructions. See fig. 3

**Step 4**

Mount the 6mm vibra mount in place as seen in figure 2 and 3.

**Step 5**

Mount the 1540 bracket onto the vibra mount and semi tighten using the 10mm nut, and washer as seen in figures 3 and 5.

**Step 6**

Insert the air flow sensor onto the bracket welded to the pipe and use the original self-tapping screws. Fig. 6.

**How to replace the factory hose with Injen's red hose.**

**Step 7**

**The square vacuum switching valve:** As seen in fig. 2, use one 18" 8mm hose to replace the hose from the throttle body and the other 20" hose to the EVAP service port. Note: Use the schematics under the hood to guide you through this process. See fig. 2

**Step 8**

**The round OBD canister :** As seen in Fig. 2&3, use the 15" 8mm hose to go to the OBD sensor port and the 11" 8mm hose to go to the Injen Cold Air Intake.

**Step 9**

Going back to step 3, remove the bolt holding the bracket in place and set the OBD sensor under the bracket and tighten. Fig. 3.

**Step 10**

Take the vacuum switching valve and bolt it to the bracket shown in Fig. 4. Use the original screw and the 6mm thin washer to fasten tight.

**Step 11**

Carefully start to position the intake in place with the air mass sensor end into the throttle body 2 3/4" straight hose and semi-tighten the clamp on the straight hose. Fig. 4 and 7

**Step 12**

Take the 6mm nut, bolt, and washer and secure the intake pipe to the 1540 bracket as seen in figure 5. Now mount the Injen red filter to the other end of the Injen pipe and tighten the clamps on the throttle body and the filter.

**Step 13**

Reconnect the 1.5" OD, black air induction pipe to the ECU. Figures 1 and 7.

**Step 14**

Use the zip ties to gather the vacuum lines away from the belts and fans. Fig. 1.

**Step 15**

Cap off the port at the engine block with the 3mm cap (Fig. 1 below the throttle body) and zip tie the harness with the blue cap away in a safe place, it will not be required. see figure 7

**Step 16**

Reconnect the battery terminal and start your engine. Congratulations! you have just completed this install.

**Note: Injen Technology now sells oil caps, spark plug covers, side covers for this application. Call your local dealer or Injen Technology for details.**